



NETHER CLOSE, LONDON, N3
£450,000 LEASEHOLD

A GROUND FLOOR TWO BEDROOM MAISONETTE SET IN A QUIET RESIDENTIAL TURNING

Finchley | 020 8349 3388 | finchley@winkworth.co.uk

Winkworth

for every step...

winkworth.co.uk



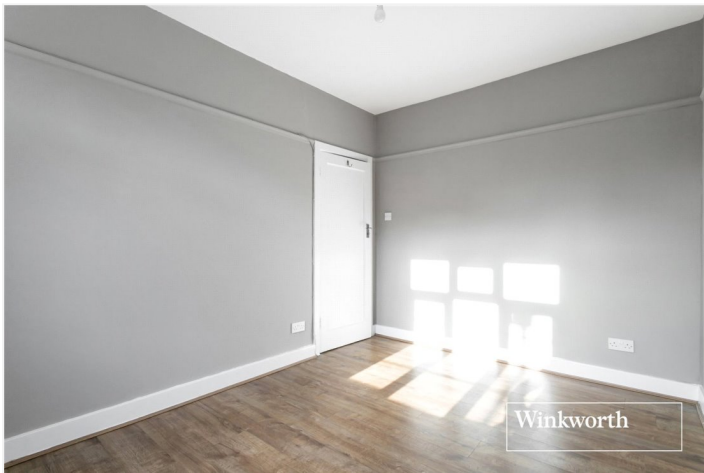
DESCRIPTION:

A beautifully presented two bedroom ground floor maisonette set in a quiet development ideally located just off Nether Street and walking distance to local amenities and West Finchley / Finchley Central underground. The property itself comprises two bedrooms, spacious reception room, modern fitted kitchen & bathroom, private garden, parking and communal grounds. The property is being offered with a long lease and on a chain free basis.

AT A GLANCE

- Ground floor
- Spacious reception room
- Modern kitchen & bathroom
- Private garden
- Two bedrooms
- Residents parking
- Long lease
- Chain free

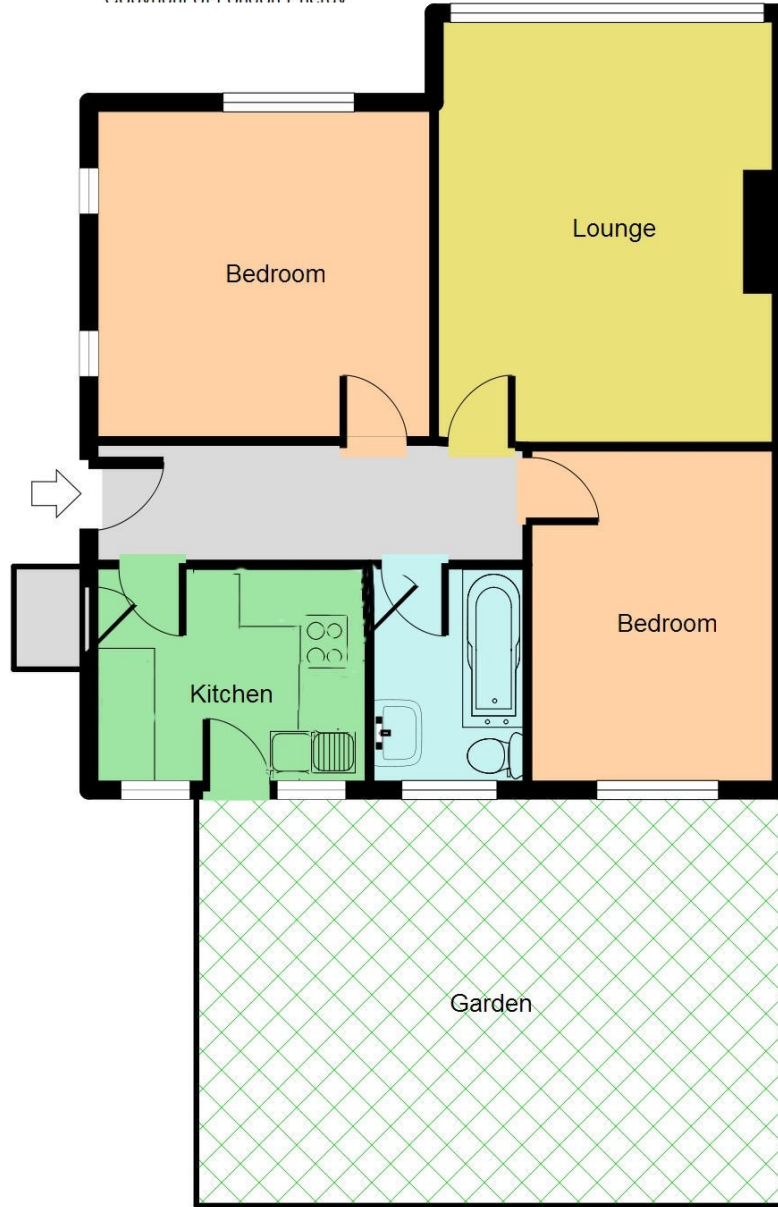




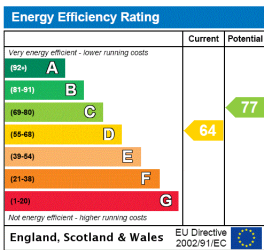
Nether Close N3

APPROX GROSS INTERNAL FLOOR AREA: 603 sq. ft / 56 sq. m

For identification only - Not to scale
Copyright of London Energy



This floorplan is for illustration purposes only and is not to scale. The position and size of doors, windows, appliances and other features are approximate.



Finchley | 020 8349 3388 | finchley@winkworth.co.uk



for every step...

winkworth.co.uk

Winkworth wishes to inform prospective buyers and tenants that these particulars are a guide and act as information only. All our details are given in good faith and believed to be correct at the time of printing but they don't form part of an offer or contract. No Winkworth employee has authority to make or give any representation or warranty in relation to this property. All fixtures and fittings, whether fitted or not are deemed removable by the vendor unless stated otherwise and room sizes are measured between internal wall surfaces, including furnishings.