



Ormiston Grove, Shepherds Bush, W12

£700,000 Share of Freehold

A beautifully presented two double bedroom Edwardian maisonette with garden.

Reception Room | Open Plan Kitchen | 2 Bedrooms | Bathroom | Garden | 741 Sq Ft / 69 Sq M | Council Tax Band D | EPC Rating Band D

Winkworth



LOCATION

Ormiston Grove forms part of the ever popular 'Groves' area of Shepherd's Bush. Within easy reach of the area's diverse array of shops and restaurants, there are also several pubs and coffee shops close by. The outside spaces of both Wormholt and Ravenscourt Parks are just a short distance away, whilst superb transport links give easy access both in to and out of Central London.

DESCRIPTION

Offered in superb condition throughout, accommodation comprises entrance hall, two double bedrooms, bathroom and open plan kitchen/reception room which in turn leads to a private garden.





LOCAL AUTHORITY

London Borough of Hammersmith & Fulham

TENURE

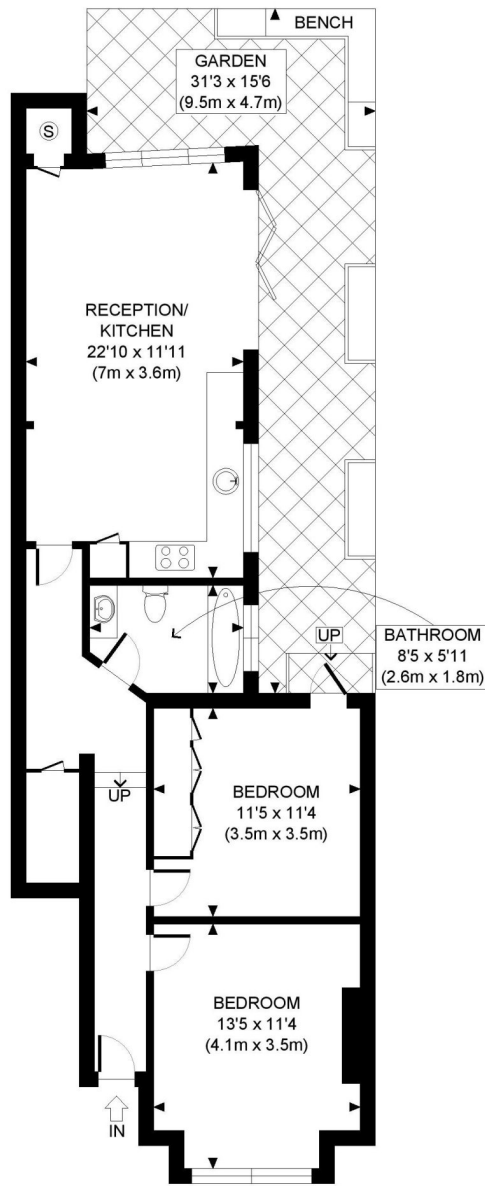
Share of Freehold.

PRICE: £700,000 Share of Freehold



Energy Efficiency Rating

	Current	Potential
Very energy efficient - lower running costs		
(92+) A		
(81-91) B		
(69-80) C		77
(55-68) D	66	
(39-54) E		
(21-38) F		
(1-20) G		
Not energy efficient - higher running costs		
England, Scotland & Wales	EU Directive 2002/91/EC	



GROUND FLOOR
GROSS INTERNAL
FLOOR AREA 741 SQ FT



APPROX. GROSS INTERNAL FLOOR AREA: 741 SQ FT/ 69 SQM

PROPERTY PHOTO PLANS.CO.UK
ONE STOP SHOP FOR PROPERTY MARKETING

This plan is for illustrative purposes only and should be used as such by any prospective client. Whilst every attempt has been made to ensure the accuracy of the Floor Plan contained here, measurements of the doors, windows, rooms and any other items are approximate and no responsibility is taken for any errors, omissions, or misstatement. The services, systems and appliances shown have not been tested and no guarantee as to the operability or efficiency can be given.

The displayed square footage is taken from the floor plans with measurements created using the Royal Institute of Chartered Surveyors' Code of Practice for Measuring. These measurements are approximate and included for illustrative purposes only. Winkworth does not make any representation as to the accuracy of these measurements and you should seek to verify them for yourself. Winkworth accept no liability for any loss you may suffer if you rely on these measurements.

Shepherds Bush | 020 8735 3266 | shepherdsbush@winkworth.co.uk

Winkworth

for every step...

Under the Property Misdescriptions Act 1991, these Particulars are a guide and act as information only. All details are given in good faith and are believed to be correct at time of printing. Winkworth give no representation as to their accuracy and potential purchasers or tenants must satisfy themselves by inspection or otherwise as to their correctness. No employee of Winkworth has authority to make or give any representation or warranty in relation to this property.