



Rosedale Gardens

Thatcham, Berkshire RG19 3LF

Nestled in the lovely town of Thatcham, this delightful 3-bedroom semi-detached is a fantastic opportunity for any family.

This home is a perfect for those seeking a quiet yet well-connected living space.

The ground floor has a generously sized living room, perfect for family gatherings or quiet evenings. Natural light floods through the windows, creating a bright and airy space.

The living room leads through to a bright conservatory that serves as a versatile space. Perfect for a home office or a quiet reading spot.

Upstairs you have three bedrooms with the master bedroom featuring ample space and large windows. There is a further double bedroom and single room.

Outside is a fantastic garden, perfect for outdoor entertaining, playtime, or simply unwinding. Rosedale Gardens is just a short walk away from the beautiful Thatcham discovery center.

Excellent transport links connect you to the neighbouring town of Newbury. Nearby Thatcham train station goes direct to both Reading and London Paddington.

EPC C
Council Tax Band D



Winkworth

AT A GLANCE

NO ONWARD CHAIN

937 Square Feet/ 87 Square Metres

Three Bedrooms

One Bathroom

Sitting Room

Conservatory

Kitchen

Driveway Parking

Garden

UTILITIES

Mains Gas & Drainage

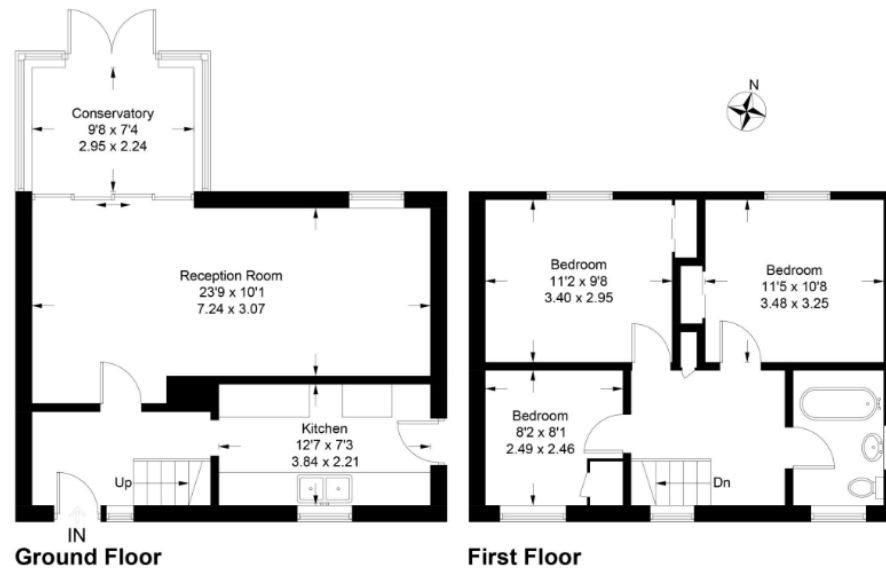
Electric

SITUATION

Located in the heart of Thatcham in the quaint moors development, this property has excellent links to Newbury town and with the train station can easily get to both Reading and London Paddington.

DIRECTIONS

What Three Words [///dollar.soaks.guitar](#)



Newbury Office

43 Northbrook Street, Newbury, Berkshire RG14 1DT

01635 552552 | newbury@winkworth.co.uk

winkworth.co.uk/newbury

Winkworth

See things differently.