



25 JUBILEE ROAD

NEWBURY RG14 7NN

A beautifully presented three double bedroom semi-detached home set close to Newbury Town centre.

The home has been renovated throughout to the highest of standards and now offers a stunning space to enjoy, split over three stories.

As you enter the house you're greeted with a bright and airy living room with a beautiful fire place as the focal point. The dining room is generous in size and flows beautiful onto the brand new kitchen, which is fitted with wooden tops and cream cabinets. The family bathroom has grey tiles, a heated towel rail and large shower.

To the second floor are two double bedrooms, both decorated beautifully. The last bedroom is on the third floor following a loft conversion prior to the current vendors ownership.

To the front of the property is a low maintenance front garden and on street parking. To the rear is a great sized east facing garden, which is mainly laid to lawn.



Winkworth

AT A GLANCE

- 94.4m² / 1016ft²
- Living Room
- Dining Room
- Kitchen
- Family Bathroom
- Three Double Bedrooms
- Private Rear Garden

UTILITIES

Mains Electricity
Gas fired central heating
Mains water and drainage
EPC E (prior to improvements made)
West Berkshire Council Tax Band C
Ultrafast Broadband is available in the area and there are no known mobile coverage issue.

SITUATION

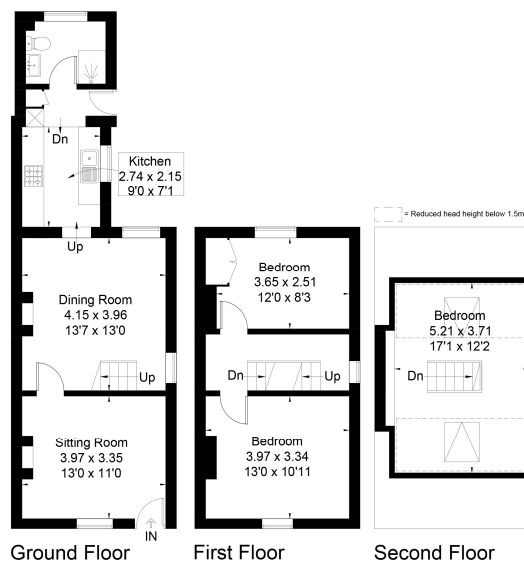
The property is located within a quiet street, 0.3 miles to the train station and 0.5 miles to Newbury town centre. Newbury offers comprehensive shopping schooling and leisure facilities and a main line railway station to London Paddington.

DIRECTIONS

What3words///sings.saving.fancy



Approximate Floor Area = 94.4 sq m / 1016 sq ft



This floor plan has been drawn in accordance with RICS Property Measurement 2nd edition.
All measurements, including the floor area, are approximate and for illustrative purposes only. @fourwalls-group.com #70234



Newbury Office

43 Northbrook Street, Newbury, Berkshire RG14 1DT
01635 552552 | newbury@winkworth.co.uk

winkworth.co.uk/newbury

Winkworth

See things differently.