

OLD FARM ROAD, LONDON, N2
£310,000 LEASEHOLD

**A SPACIOUS TWO BEDROOM DUPLEX FLAT IDEALLY
LOCATED FOR TRANSPORT LINKS & AMENITIES**

Finchley | 020 8349 3388 | finchley@winkworth.co.uk



DESCRIPTION:

STAMP DUTY FREE FOR FIRST TIME BUYERS

We are pleased to offer this spacious two bedroom duplex apartment, ideally located for local transport links and amenities. The property offers great living space and comprises of kitchen, large reception room, two bedrooms and family bathroom. Further benefits include balcony, double glazing, lift-in-block ample residents' parking, two playgrounds, outdoor gym area, basketball court and being offered chain free. Would ideally suit a first time buyer or buy-to-let investor!

TENURE: Leasehold – 101 years

COUNCIL TAX: Band C

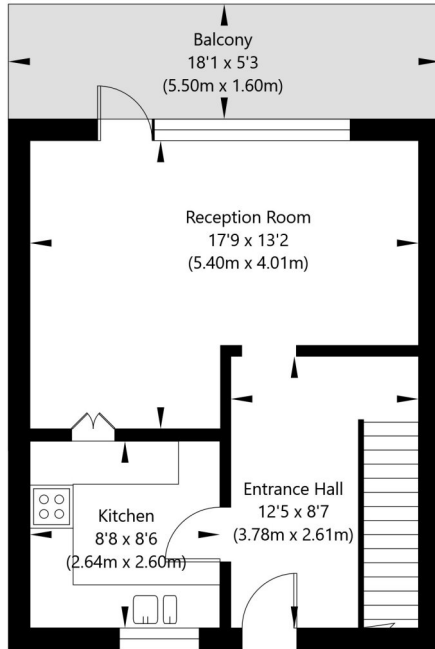
AT A GLANCE

- Purpose built
- Lift in block
- Duplex flat
- Two bedrooms
- Balcony
- Communal grounds
- Residents' parking
- Offered chain free

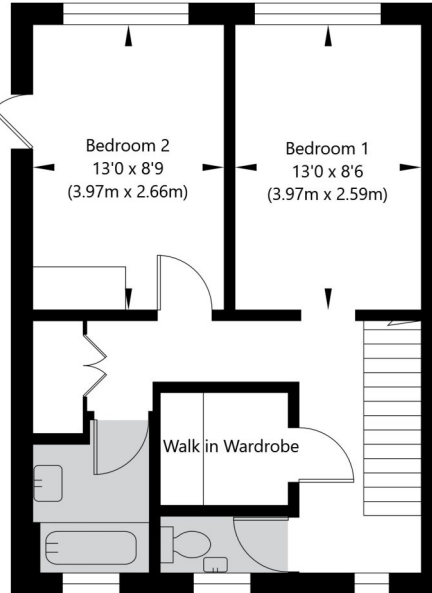




Old Farm Road, London N2 9RQ



First Floor
GROSS INTERNAL FLOOR AREA
APPROX. 36.62 SQ M / 394 SQ FT



Second Floor
GROSS INTERNAL FLOOR AREA
APPROX. 41.19 SQ M / 443 SQ FT

APPROXIMATE GROSS INTERNAL FLOOR AREA 77.81 SQ M / 837 SQ FT
THIS FLOOR PLAN IS FOR ILLUSTRATIVE PURPOSES ONLY AND
SHOULD BE USED FOR THIS PURPOSE BY PROSPECTIVE APPLICANTS AS ITS NOT TO SCALE.

(c) AMBERSHORE PIX LIMITED / PHOTO - VIDEO - FLOOR PLANS / 0800 999 1577 / WWW.AMERSHOREPIX.CO.UK

Winkworth

