



EDEN TERRACE, BATH, SOMERSET, BA1
£570,000 FREEHOLD

Winkworth



EDEN TERRACE, BATH, SOMERSET, BA1

3 bedroom period terraced house in sought after location in Larkhall | accessed via a no through road.

A charming Victorian house | Accessed via a no through road | Beautiful kitchen and living space with large glass ceiling lantern | Sought after location in Larkhall.

Entrance hall | kitchen breakfast room with dining and seating area | sitting room | 3 bedrooms | family shower room plus bathroom adjoining principal bedroom | utility room | downstairs loo | South facing garden | On street parking.

Eden Terrace is a pretty row of Victorian houses in a sought after location in the ever popular Larkhall Village. The house is approached via a no through road just off Larkhall High Street.

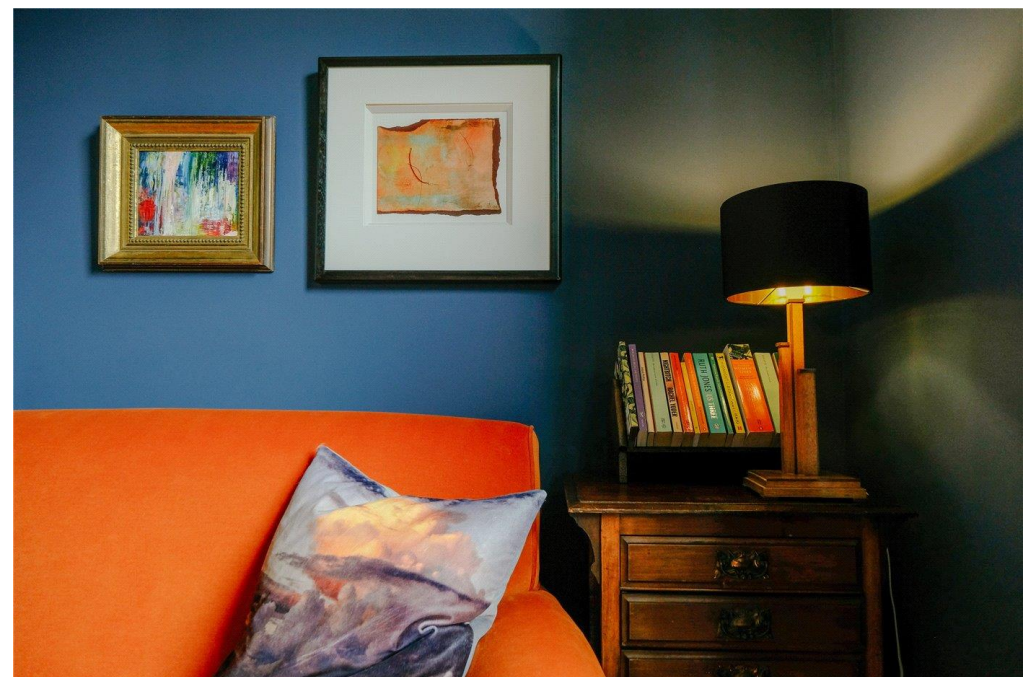
The charming accommodation is arranged over 3 floors of this pretty stone built house. The house has been thoughtfully refurbished to combine modern design with the period features.

On the ground floor is an impressive kitchen/dining and living room with huge ceiling lantern and stylish kitchen. Off this space is a useful utility room and downstairs loo. There is also a separate sitting room at the front of the house overlooking the garden.

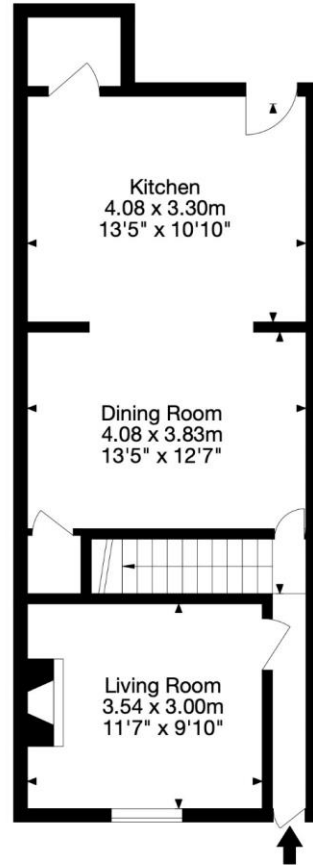
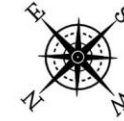
The first floor has 2 double bedrooms and a stylish shower room with rainfall shower under a vaulted ceiling and Velux window.

Upstairs in the principal bedroom with ensuite bathroom. Views over the village and surrounding countryside.

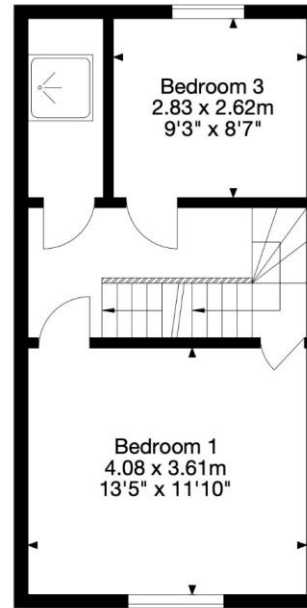




18 Eden Terrace, Larkhall, Bath BA1 6TQ
 Gross Internal Area (Approx.)
 108 sq m / 1,159 sq ft



Ground Floor

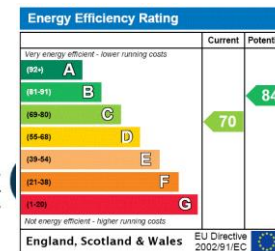


First Floor



Second Floor

Capture Property Marketing 2024. Drawn to RICS guidelines. Not drawn to scale.
 Plan is for illustration purposes only. All features, door openings, and window locations are approximate.
 All measurements and areas are approximate and should not be relied on as a statement of fact.



Bath | 01225 829 000 | bath@winkworth.co.uk

winkworth.co.uk

Winkworth wishes to inform prospective buyers and tenants that these particulars are a guide and act as information only. All our details are given in good faith and believed to be correct at the time of printing but they don't form part of an offer or contract. No Winkworth employee has authority to make or give any representation or warranty in relation to this property. All fixtures and fittings, whether fitted or not are deemed removable by the vendor unless stated otherwise and room sizes are measured between internal wall surfaces, including furnishings.

