



BRICK LANE, LONDON, E1
£799,000 LEASEHOLD

STUNNING SPLIT LEVEL PENTHOUSE APARTMENT WITH PRIVATE TERRACE AND CITY SYLLINE VIEWS

Shoreditch | 020 7749 7650 | shoreditch@winkworth.co.uk





DESCRIPTION:

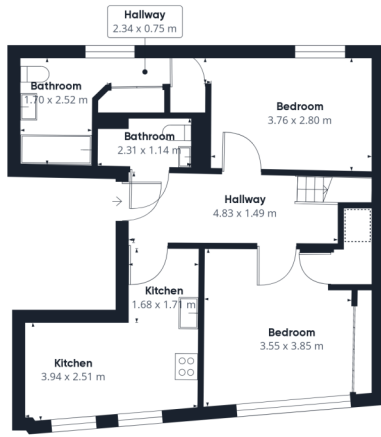
A stunning split-level penthouse apartment set over the third and fourth floors of a lovely period building on Brick Lane. On entry the hallway of the apartment leads to two large double bedrooms (one with walk in wardrobe and ensuite bathroom), a master bathroom, large storage space and a fully fitted contemporary kitchen with dining space. The property has a stairway that then leads to the spacious living room on the fourth floor and also benefits from floor to ceiling windows that provide a dual aspect view of the city skyline and dramatic roof top views facing East. Further benefits of this apartment include two private terraces with plenty of entertaining space, bicycle storage and an abundance of natural light.

The apartment is extremely well positioned for those looking to be close to Banksy artwork over the shops, bars and restaurants that Spitalfields and its surrounds has to offer. On the edge of the City, the property is also within walking distance of Liverpool Street (Elizabeth line, Circle, District, Central and Hammersmith & City tube lines, and overland) and Shoreditch High Street (Overground) stations.

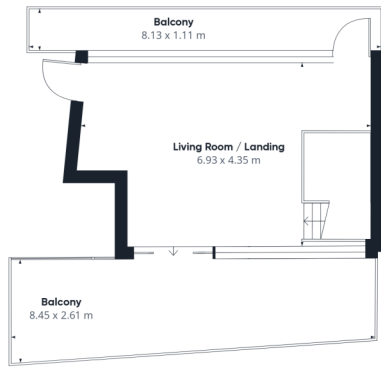
Winkworth



Winkworth



Floor 0



Floor 1

Approximate total area⁽¹⁾
83.69 m²

Reduced headroom
0.59 m²

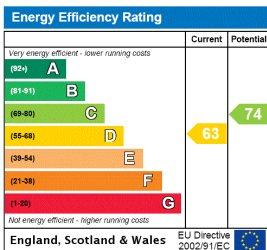
(1) Excluding balconies and terraces

☒ Reduced headroom
(below 1.5m/4.92ft)

While every attempt has been made to ensure accuracy, all measurements are approximate, not to scale. This floor plan is for illustrative purposes only.

GIRAFFE360

This floorplan is for illustration purposes only and is not to scale. The position and size of doors, windows, appliances and other features are approximate.



Shoreditch | 020 7749 7650 | shoreditch@winkworth.co.uk



winkworth.co.uk

See things differently

Winkworth wishes to inform prospective buyers and tenants that these particulars are a guide and act as information only. All our details are given in good faith and believed to be correct at the time of printing but they don't form part of an offer or contract. No Winkworth employee has authority to make or give any representation or warranty in relation to this property. All fixtures and fittings, whether fitted or not are deemed removable by the vendor unless stated otherwise and room sizes are measured between internal wall surfaces, including furnishings.