



WOODLAWN ROAD, SW6
£2,850 PER MONTH

An exquisite newly-renovated two double bedroom, two bathroom, split-level flat conveniently located by the River Thames.

Fulham & Parsons Green | 020 7731 3388 | fulham@winkworth.co.uk

Winkworth

for every step...

winkworth.co.uk



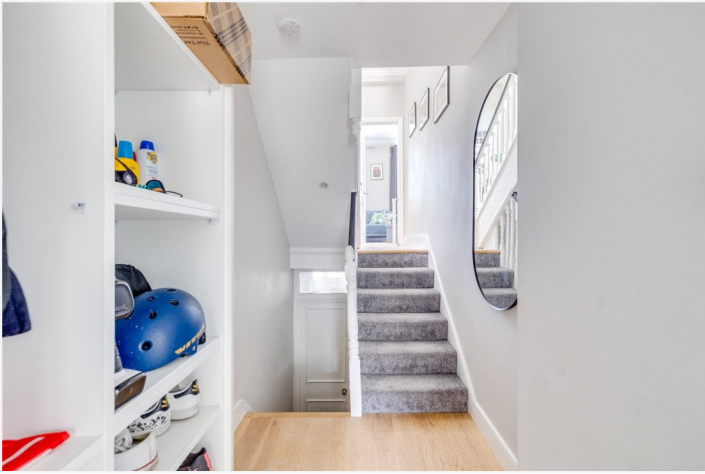
This stunning property spans over 850 square feet and is located over the first and second floors of a converted Victorian terrace.

You enter on the ground floor with stairs leading up to the first floor where you will find the impressive open-plan kitchen reception room to the front of the property. The newly fitted kitchen is a triumph of design and flows perfectly onto the sitting room where there is ample space for dining and relaxing. There is a double bedroom, with built-in wardrobes, and an shower-room on this floor. On the second floor is the expansive master bedroom with ample built in storage and a beautiful ensuite shower-room.

The property is presented to the market in immaculate condition and would make the perfect home for a single professional or couple.

Woodlawn Road is ideally positioned close to the River Thames and is within walking distance of Hammersmith tube and Barons Court station. Bishops Park and the ever popular "Crabtree" pub are close by and there are several bus routes on Fulham Palace Road which connects the property to central and south London.





WOODLAWN ROAD, SW6

Approximate gross internal area
866 sq ft / 80.45 sq m



The floor plan is not to scale and measurements and areas shown are approximate and therefore should be used for illustrative purposes only. The plan has been prepared in accordance with the RICS code of Measuring Practice and whilst we have confidence in the information produced, it must not be relied on. If there is any aspect of particular importance, you should carry out or commission your own inspection of the property.

This floorplan is for illustration purposes only and is not to scale. The position and size of doors, windows, appliances and other features are approximate.

Fulham & Parsons Green | 020 7731 3388 | fulham@winkworth.co.uk

Winkworth

for every step...

winkworth.co.uk

Winkworth wishes to inform prospective buyers and tenants that these particulars are a guide and act as information only. All our details are given in good faith and believed to be correct at the time of printing but they don't form part of an offer or contract. No Winkworth employee has authority to make or give any representation or warranty in relation to this property. All fixtures and fittings, whether fitted or not are deemed removable by the vendor unless stated otherwise and room sizes are measured between internal wall surfaces, including furnishings.