



Becklow Gardens, Shepherd's Bush, W12

£425,000 Leasehold

A three bedroom flat on the third floor of a purpose built block in the heart of Askew Village.

Reception Room | Kitchen | 3 Bedrooms | Bathroom | Cloakroom | Balcony | 693 Sq Ft / 64 Sq M |
Council Tax Band C | EPC Rating Band C

Winkworth



LOCATION

Becklow Gardens runs between Uxbridge Road and Askew Road, where numerous restaurants, pubs and coffee shops can be found, as well as an array of shops such as The Ginger Pig, Askew Wine and Gail's Bakery. Shepherd's Bush offers not only Westfield London shopping centre, but also an abundance of independent bars, restaurants and an internationally famous music venue, as well as outstanding transport links.

DESCRIPTION

The flat is generally well presented, although offers the buyer the opportunity to improve to their own taste. Accommodation comprises entrance hall, reception room with balcony, three double bedrooms, bathroom, WC and kitchen.

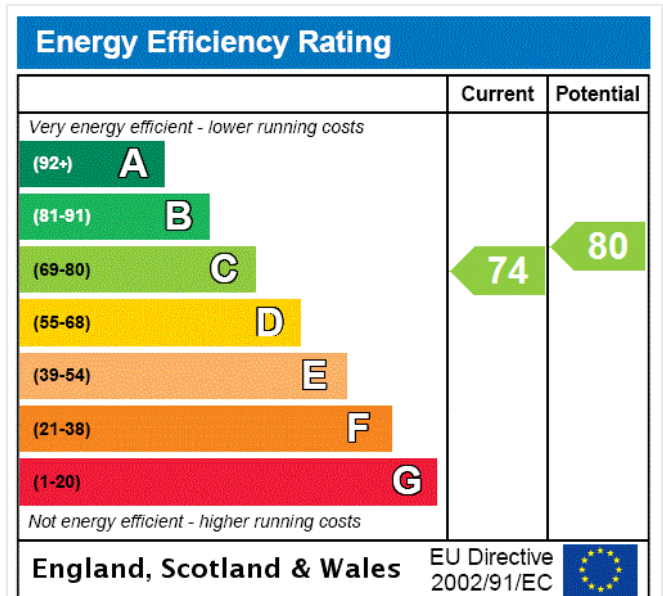


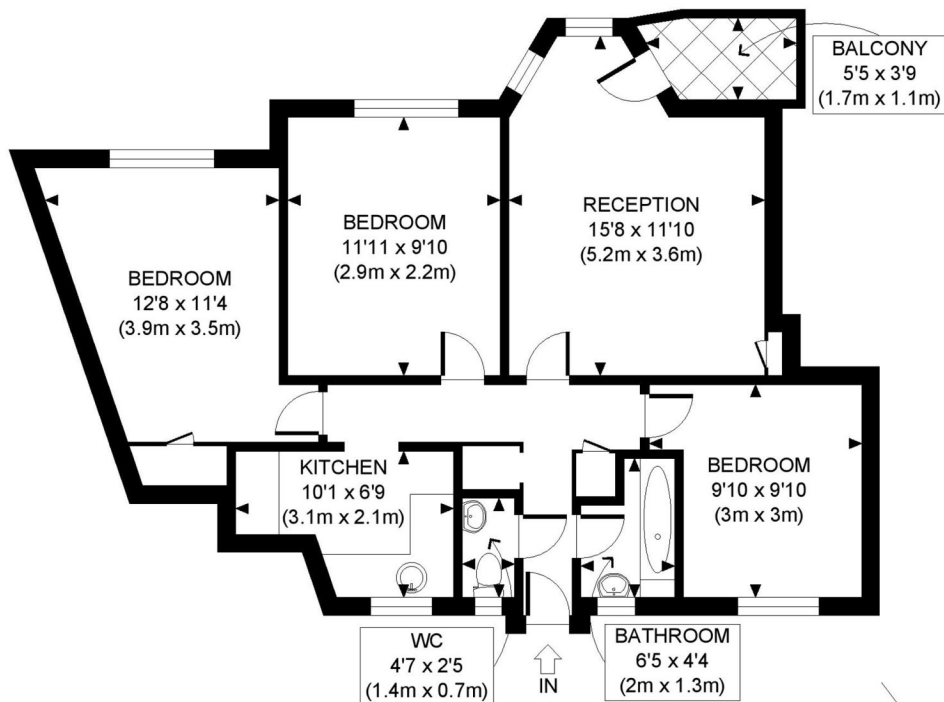


LOCAL AUTHORITY
Hammersmith & Fulham

TENURE
Leasehold.

PRICE: £425,000 Leasehold





THIRD FLOOR
GROSS INTERNAL
FLOOR AREA 693 SQ FT

APPROX. GROSS INTERNAL FLOOR AREA: 693 SQ FT/ 64 SQM

PROPERTY PHOTO PLANS.CO.UK
ONE STOP SHOP FOR PROPERTY MARKETING

This plan is for illustrative purposes only and should be used as such by any prospective client. Whilst every attempt has been made to ensure the accuracy of the Floor Plan contained here, measurements of the doors, windows, rooms and any other items are approximate and no responsibility is taken for any errors, omissions, or misstatement. The services, systems and appliances shown have not been tested and no guarantee as to the operability or efficiency can be given.

The displayed square footage is taken from the floor plans with measurements created using the Royal Institute of Chartered Surveyors' Code of Practice for Measuring. These measurements are approximate and included for illustrative purposes only. Winkworth does not make any representation as to the accuracy of these measurements and you should seek to verify them for yourself. Winkworth accept no liability for any loss you may suffer if you rely on these measurements.

Shepherds Bush | 020 8735 3266 | shepherdsbush@winkworth.co.uk

Winkworth

for every step...

Under the Property Misdescriptions Act 1991, these Particulars are a guide and act as information only. All details are given in good faith and are believed to be correct at time of printing. Winkworth give no representation as to their accuracy and potential purchasers or tenants must satisfy themselves by inspection or otherwise as to their correctness. No employee of Winkworth has authority to make or give any representation or warranty in relation to this property.