



Jubilee Close Pamber Heath Hampshire RG26 3HP

Winkworth



Jubilee Close

Pamber Heath Hampshire RG26 3HP

Accommodation

Entrance hall
Living room
Dining room
Study
Kitchen
Three bedrooms
Shower room
Garage and driveway
Garden

Description

This spacious three bedroom end terrace home has been extended right across the back to provide two additional rooms.

It has a contemporary styled kitchen and shower room and is situated within a cul-de-sac in the popular Pamber Heath area, close to open countryside and wide ranging amenities in Tadley.



The front door is around the side of the house and leads into the entrance hall.

To the right is the stylishly fitted kitchen, which has white high gloss finish cupboards and drawers with integrated appliances including an inset gas hob, oven/grill, microwave, dishwasher, washing machine, fridge/freezer and even a wine cooler!

Across the hallway is the living room, which has an attractive gas flame fire and a deep understairs storage cupboard.

Glazed double doors lead through into the dining room and this has a high vaulted ceiling and French doors to the garden. To the side is a good size study.

Heading upstairs, there are two double size bedrooms and a large single.

The bathroom has been refitted into a contemporary styled shower room with a large walk-in cubicle with a dual function shower.

Moving outside, there is an integral garage (which has power and light) and there is a block paved driveway with parking for two or three cars.

To the rear, the garden has been paved to create a low maintenance courtyard which is enclosed with panelled fencing.

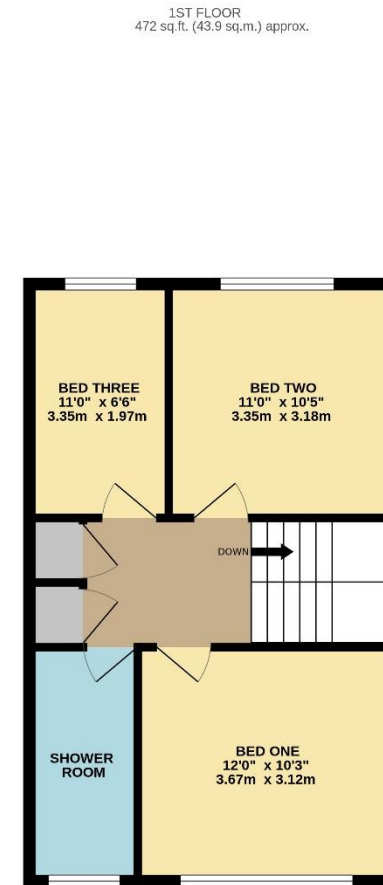
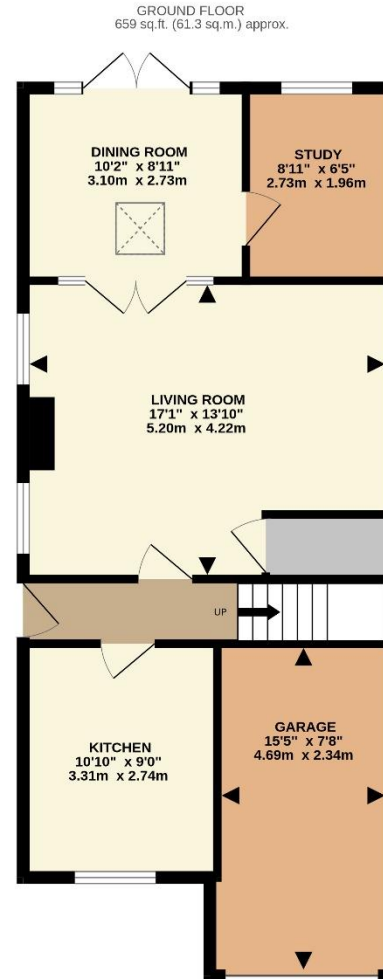
The house is heated by a gas fired boiler and there is a water softener included in the sale.



Jubilee Close

Pamber Heath Hampshire RG26 3HP

Energy Efficiency Rating		
	Current	Potential
<i>Very energy efficient - lower running costs</i>		
(92+)	A	84
(81-91)	B	
(69-80)	C	
(55-68)	D	
(39-54)	E	
(21-38)	F	
(1-20)	G	69
<i>Not energy efficient - higher running costs</i>		
England, Scotland & Wales	EU Directive 2002/91/EC	



TOTAL FLOOR AREA: 1132 sq.ft. (105.1 sq.m.) approx.

Whilst every attempt has been made to ensure the accuracy of the floorplan contained here, measurements of doors, windows, rooms and any other items are approximate and no responsibility is taken for any error, omission or mis-statement. This plan is for illustrative purposes only and should be used as such by any prospective purchaser. The services, systems and appliances shown have not been tested and no guarantee as to their operability or efficiency can be given.
Made with Metropix ©2024

Basingstoke Office

10B Church Street, Basingstoke, Hampshire, RG21 7QE

01256 811730 | basingstoke@winkworth.co.uk

winkworth.co.uk/Basingstoke



See things differently.