



SPRING CLOSE, HERTFORDSHIRE, WD6
£300,000 LEASEHOLD

A CHAIN FREE TWO DOUBLE BEDROOM PURPOSE BUILT GARDEN FLAT

Borehamwood | 020 8953 8899 | borehamwood@winkworth.co.uk

Winkworth

for every step...

winkworth.co.uk



DESCRIPTION:

Located in a quiet sought after cul de sac, a moments walk from Aberford Park, Several "Good" Ofsted rated schools and multiple bus routes is this two bedroom purpose built garden flat.

Offered for sale chain free, the property is in need of some updating, which has been reflected in the asking price, and benefits from generous sections of gardens to both the front and rear.

The accommodation is well proportioned, totals 725 square feet, and consists of two double bedrooms a southerly facing lounge, kitchen diner and Shower room with walk in shower.

AT A GLANCE

- Two Double Bedrooms
- Chain Free
- Own Front and Rear Gardens
- 725 Square Feet
- Brick Built Shed
- Gas Central Heating
- Double Glazed
- Quiet Cul de Sac





Approximate Gross Internal Area = 67.4 sq m / 725 sq ft
 Outbuilding = 4.7 sq m / 50 sq ft
 Total = 72.1 sq m / 775 sq ft

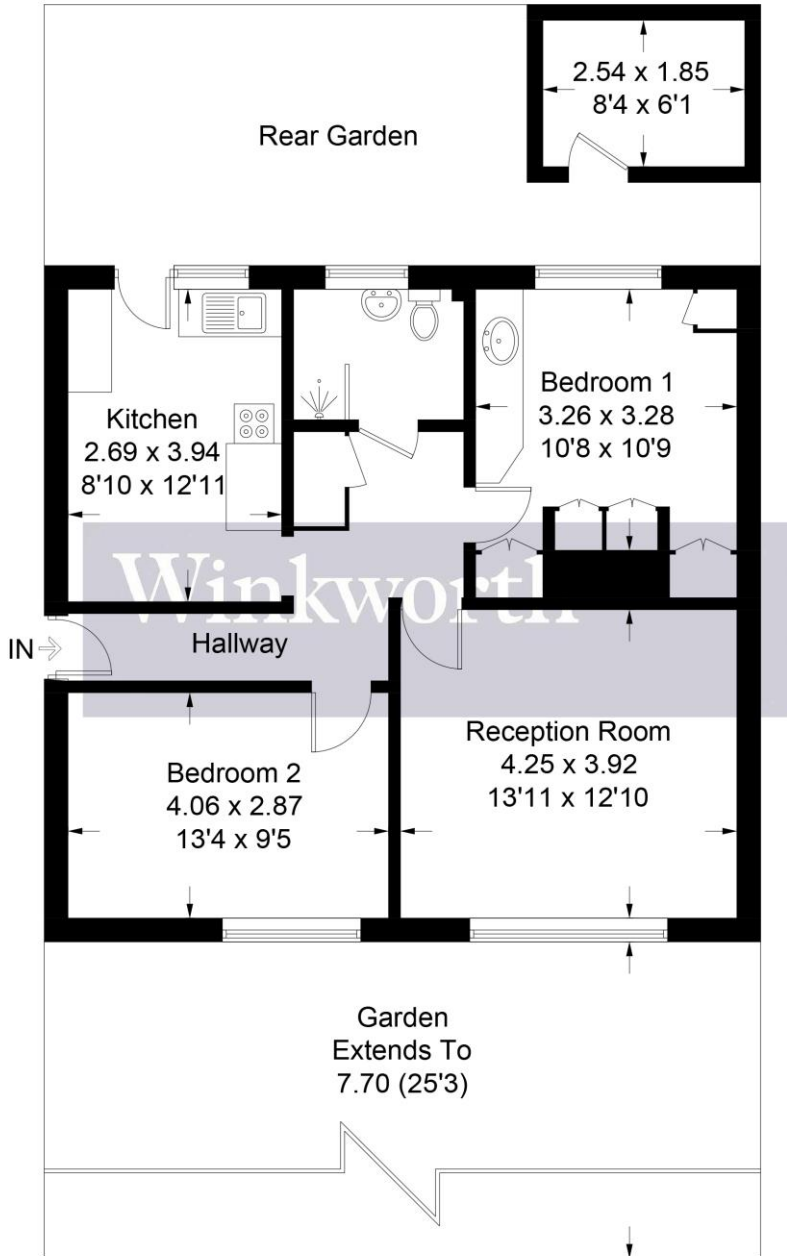
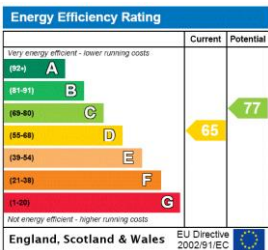


Illustration for identification purposes only, measurements are approximate, not to scale. Winkworth © 2024 (ID1131065)

This floorplan is for illustration purposes only and is not to scale. The position and size of doors, windows, appliances and other features are approximate.



Tenure: Leasehold

Term: 81 year and 8 months

Service Charge: £781.6 per annum

Ground Rent: £ 10 Annually (subject to increase)

Council Tax Band: C

Where no figures are shown, we have been unable to ascertain the information. All figures that are shown were correct at the time of printing.

Borehamwood | 020 8953 8899 | borehamwood@winkworth.co.uk



for every step...

winkworth.co.uk

Winkworth wishes to inform prospective buyers and tenants that these particulars are a guide and act as information only. All our details are given in good faith and believed to be correct at the time of printing but they don't form part of an offer or contract. No Winkworth employee has authority to make or give any representation or warranty in relation to this property. All fixtures and fittings, whether fitted or not are deemed removable by the vendor unless stated otherwise and room sizes are measured between internal wall surfaces, including furnishings.