



GALTON STREET, LONDON, W10
£1,050,000 FREEHOLD

**A LOVELY EXAMPLE OF A THREE BEDROOM FAMILY COTTAGE
IN THE AVENUES CLOSE TO QUEENS PARK AND KENSAL RISE.**

Kensal Rise & Queens Park | 0208 960 4947 | kensalrise@winkworth.co.uk

Winkworth

winkworth.co.uk

See things differently



LOCATION:

Galton Street is in a great location just to the North of Notting Hill and South of Queens Park. Transport links here are excellent with a short walk to either Westbourne Park on Hammersmith & City & Circle line or to Queens Park on the Bakerloo & Overground lines. The no.18 bus service is frequent along Harrow Road to reach Euston in around 20 minutes. The amenities of Chamberlayne Road, Salusbury Road and Golbourne Road are also only a short walk away and the area is serviced by some excellent state and private schools.



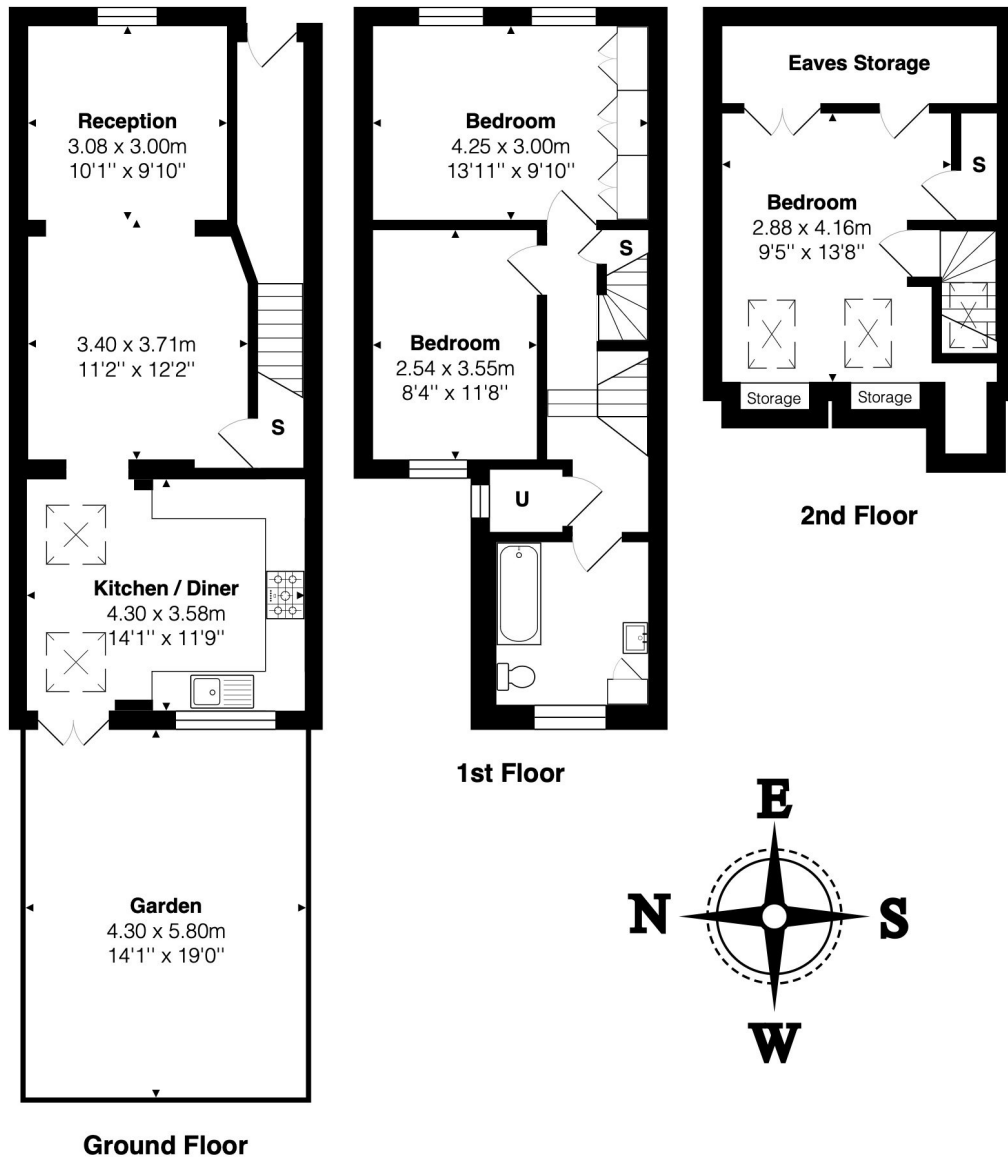
Winkworth



DESCRIPTION:

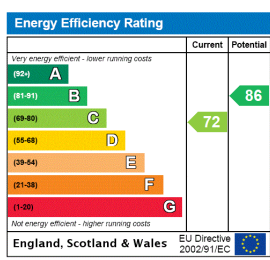
This beautiful home has 1160 sq.ft of accommodation arranged over three floors including an excellent loft conversion housing the third bedroom / guest double. On the first floor buyers will find a full width, bright and airy master bedroom to the front of the building with fitted wardrobes. Behind this is a third double bedroom and towards the rear of the house a large family bathroom. The ground floor of the property benefits greatly from being opened up and extended into the side return, creating a super open plan space leading through to the kitchen and private garden to the rear. The property is in great condition throughout and will make a great family home as it has done for the current owners.

Winkworth



Total Area: 107.8 m² ... 1160 ft² (excluding garden)
 All measurements are approximate and for display purposes only

This floorplan is for illustration purposes only and is not to scale. The position and size of doors, windows, appliances and other features are approximate.



Kensal Rise & Queens Park | 0208 960 4947 | kensalrise@winkworth.co.uk



winkworth.co.uk

See things differently

winkworth wishes to inform prospective buyers and tenants that these particulars are a guide and act as information only. All our details are given in good faith and believed to be correct at the time of printing but they don't form part of an offer or contract. No winkworth employee has authority to make or give any representation or warranty in relation to this property. All fixtures and fittings, whether fitted or not are deemed removable by the vendor unless stated otherwise and room sizes are measured between internal wall surfaces, including furnishings.