

CADOGAN GARDENS, LONDON, N3  
£950,000 FREEHOLD

**A WELL PRESENTED, THREE BEDROOM,  
FAMILY HOME, OFFERING POTENTIAL TO  
EXTEND STPP.**

Finchley | 020 8349 3388 | [finchley@winkworth.co.uk](mailto:finchley@winkworth.co.uk)

**Winkworth**

for every step...

[winkworth.co.uk](http://winkworth.co.uk)



## DESCRIPTION:

Set on a much sought-after turning, in the heart of Finchley Central, within a short walk to Ballards Lane amenities, underground station and Victoria Park, we are pleased to offer this well presented family home with potential to extend stpp. The property comprises of a through lounge, fitted kitchen, three bedrooms, newly fitted bathroom and separate wc.

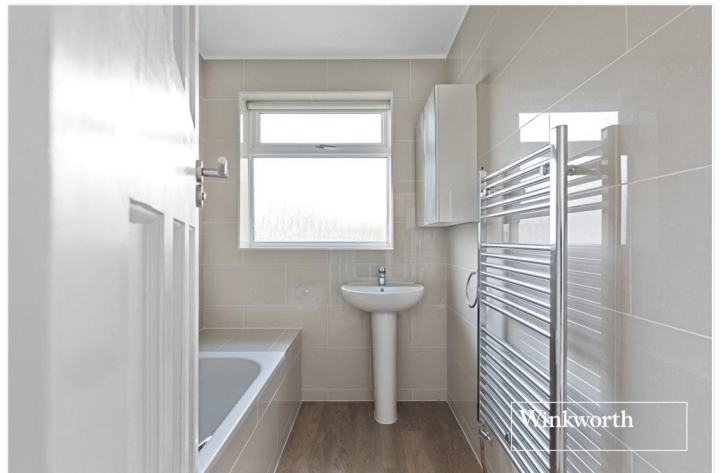
Further benefits include a private rear garden, off street parking, garage and a brand new roof.

The property is being offered on a chain free basis.

## AT A GLANCE

- Set in a quiet residential turning
- Through Lounge
- Fitted Kitchen
- Modern family bathroom & wc
- Three bedrooms
- Off street parking & garage
- Chain free

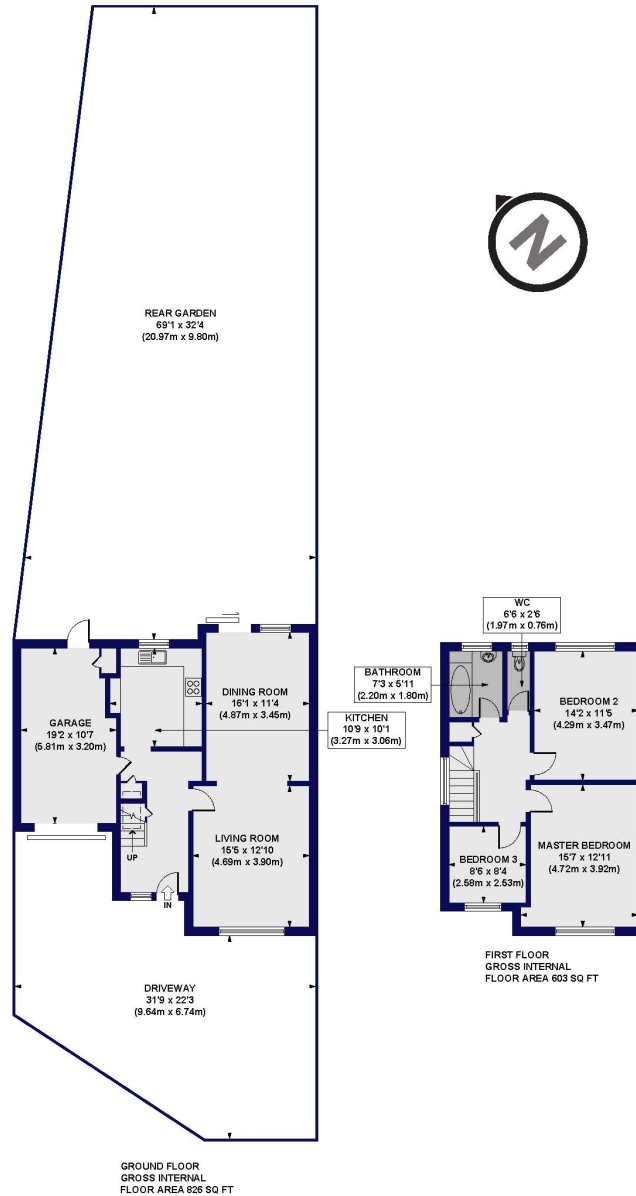




# Cadogan Gardens, N3

Approx. Gross Internal Floor Area 1429 sq. ft / 132.80 sq. m (Including Garage)

Approx. Gross Internal Floor Area 1126 sq. ft / 113.89 sq. m (Excluding Garage)



All measurements of walls, doors, windows, fittings and appliances, including their size and location, are shown as standard sizes and do not constitute any warranty or representation by the seller, their agent or CP Creative. Any intending purchaser must satisfy himself by inspection or otherwise as to the correctness of the information contained in these plans. This plan is for illustrative purposes only and should be used as such by any prospective purchasers.

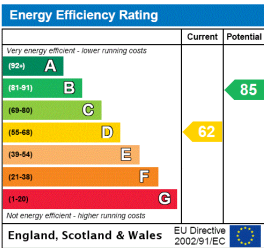
**Winkworth**

This floorplan is for illustration purposes only and is not to scale. The position and size of doors, windows, appliances and other features are approximate.

**Tenure:** Freehold

**Council Tax Band:** E

Where no figures are shown, we have been unable to ascertain the information. All figures that are shown were correct at the time of printing.



Finchley | 020 8349 3388 | finchley@winkworth.co.uk

**Winkworth**

for every step...

winkworth.co.uk

Winkworth wishes to inform prospective buyers and tenants that these particulars are a guide and act as information only. All our details are given in good faith and believed to be correct at the time of printing but they don't form part of an offer or contract. No Winkworth employee has authority to make or give any representation or warranty in relation to this property. All fixtures and fittings, whether fitted or not are deemed removable by the vendor unless stated otherwise and room sizes are measured between internal wall surfaces, including furnishings.