



1A ST JOHN'S WOOD PARK, LONDON, NW8 £2,350,000 LEASEHOLD

An exceptional three-double bedroom apartment, located on the first-floor of this brand-new development designed by the international award-winning architects Maccreeanor Lavington. The property benefits from high ceilings with inset LED spotlights throughout, engineered oak wooden flooring with under floor heating and a comfort cooling system to all rooms. The bedrooms are fully equipped with bespoke fitted wardrobes by Novamobili and each room benefits from a Juliet balcony. In addition, there are two bathrooms (one is en-suite) with floor to ceiling porcelain tiles, Grohe chrome fittings and backlit vanity mirrors. The open-plan Poggenpohl kitchen is stunning, with fully fitted Miele appliances, a beautiful 20mm Caesarstone worktop and breakfast bar area, which leads on to a spacious living room, with bay window overlooking St John's Wood Park. Naturally the development has a secure, portered entrance and is located less than one mile away from the newly landscaped St John's Wood High Street, Regents Park, Primrose Hill, not to mention both Lord's Cricket ground and St John's Wood Underground Station (Jubilee Line). Parking available subject to separate agreement.

Principle Bedroom with En-Suite | Two Further Bedrooms | Bathroom | Open Plan Kitchen with Miele Appliances | Reception Room | Balcony | Underfloor Heating | Comfort Cooling System | Portered Entrance | Leasehold

View our virtual tour here: <https://youtu.be/8nt1Hmjt-r4>

Winkworth

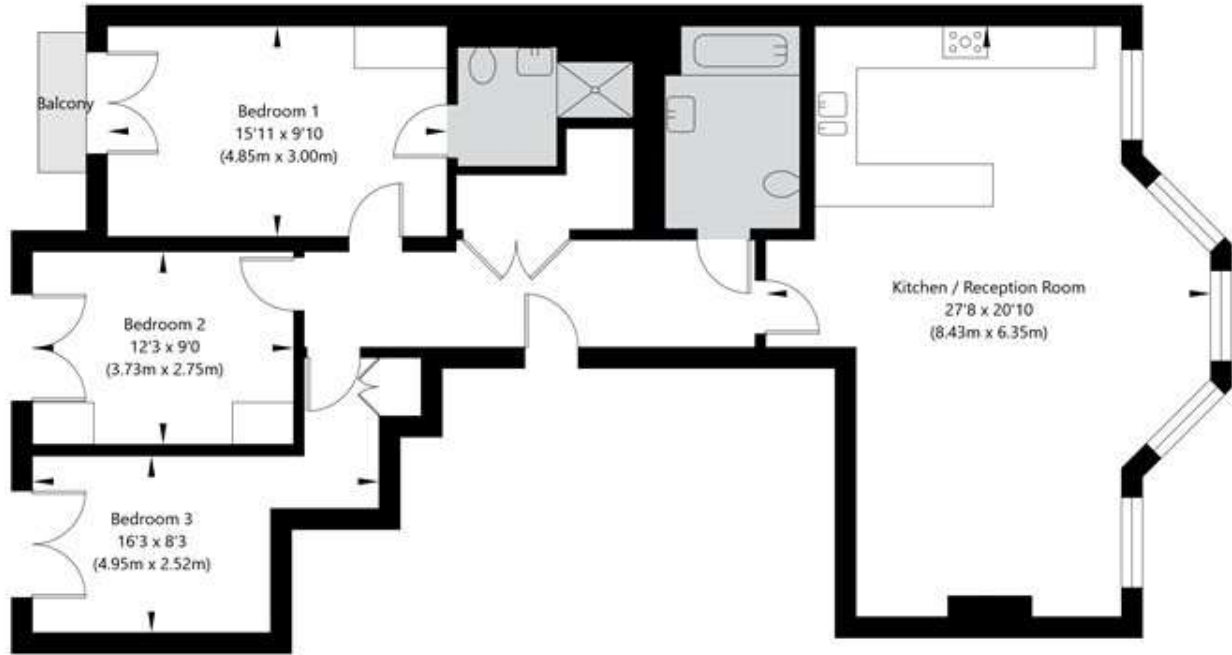
for every step...

winkworth.co.uk/st-johns-wood



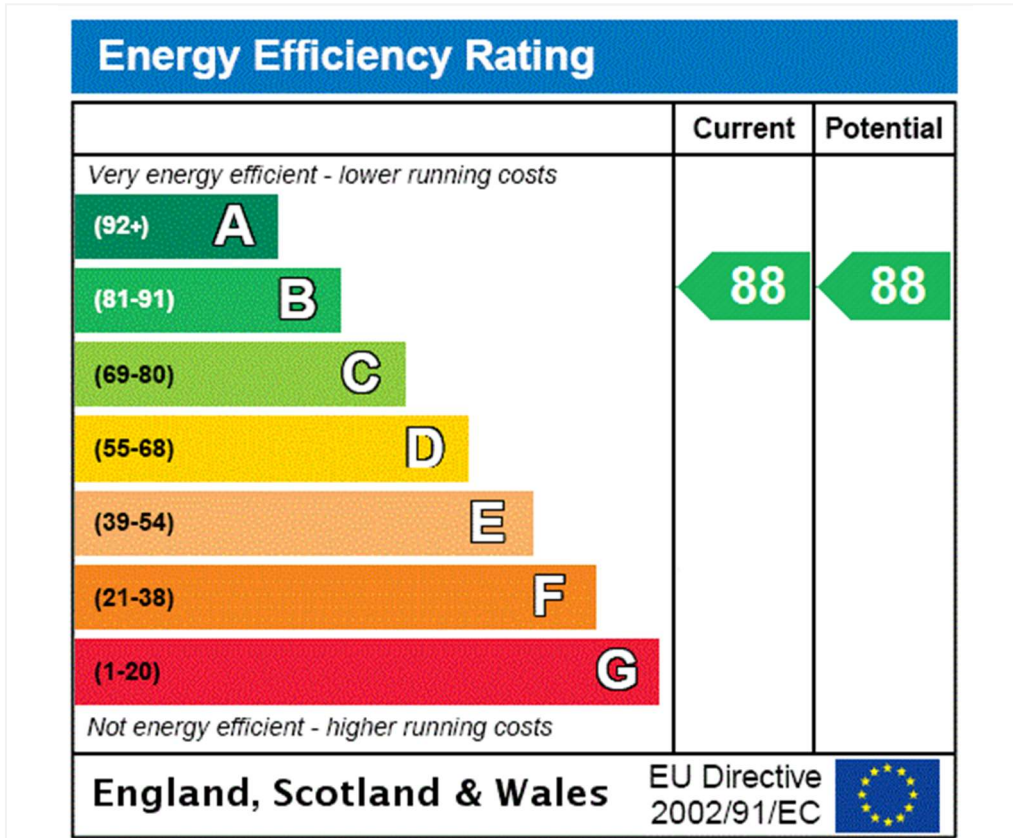
St John's Wood Park, London NW8 6QS

First Floor
GROSS INTERNAL FLOOR AREA
APPROX. 104.25 SQ M / 1122 SQ FT



APPROXIMATE GROSS INTERNAL FLOOR AREA 104.25 SQ M / 1122 SQ FT
THIS FLOOR PLAN IS FOR ILLUSTRATIVE PURPOSES ONLY AND
SHOULD BE USED FOR THIS PURPOSE BY PROSPECTIVE APPLICANTS AS ITS NOT TO SCALE.

(c) AMBERSHORE PIX LIMITED / PHOTO - VIDEO - FLOOR PLANS / 0800 999 1577 / WWW.AMERSHOREPIX.CO.UK



Tenure: Leasehold
Term: Expires - 31/05/3021
Service Charge: £9,253 per annum
Council Tax Band: G

Where no figures are shown, we have been unable to ascertain the information. All figures that are shown were correct at the time of printing.

Where no figures are shown, we have been unable to ascertain the information. All figures that are shown were correct at the time of printing. These particulars are not an offer or contract, nor part of one. You should not rely on statements by Winkworth in the particulars or by word of mouth or in writing "information" as being factually accurate about the property, its condition or its value. Winkworth does not have any authority to make any representations about the property, and accordingly any information given is entirely without responsibility on the part of the agents, seller(s) or lessor(s). These particulars are prepared on the basis of the information supplied by our client and are a rough guide for information only. The photographs show only certain parts of the property. We are not able to check all of the information and therefore are unable to guarantee accuracy. All interested parties are therefore advised to undertake all necessary inspections and checks that they deem appropriate. Where displayed, the square footage is taken from the floor plans, which are created by an independent supplier. These measurements are approximate and included for illustrative purposes only. The measurements may vary. Winkworth does not make any representation as to the accuracy of these measurements and you should seek to verify them for yourself. Winkworth accept no liability for any loss you may suffer if you rely on these measurements. All fixtures and fittings, whether fitted or not are deemed removable by the vendor unless stated. Any reference to alterations to, or use of, any part of the property does not mean that any necessary planning, building regulations or other consent has been obtained. Amenities and appliances have not been tested



St John's Wood | 103-104 St. Johns Wood Terrace, London, NW8 6PL | 020 7586 7001 |

for every step...

winkworth.co.uk/st-johns-wood

Winkworth wishes to inform prospective buyers and tenants that these particulars are a guide and act as information only. All our details are given in good faith and believed to be correct at the time of printing but they don't form part of an offer or contract. No Winkworth employee has authority to make or give any representation or warranty in relation to this property. All fixtures and fittings, whether fitted or not are deemed removable by the vendor unless stated otherwise and room sizes are measured between internal wall surfaces, including furnishings.