



ARLINGTON LODGE, WEYBRIDGE, SURREY, KT13  
**£1,400 PER MONTH**

## WITH ITS OWN ENTRANCE BRIGHT 2 BEDROOM FIRST FLOOR FLAT CLOSE TO WEYBRIDGE TOWN CENTRE

### DESCRIPTION:

A bright and spacious 2 double bedroom first floor apartment with its own entrance and stone's throw away from Weybridge town centre. Arlington Lodge is a small and well maintained private estate with a lovely communal garden and single garage. EPC C.

### AT A GLANCE

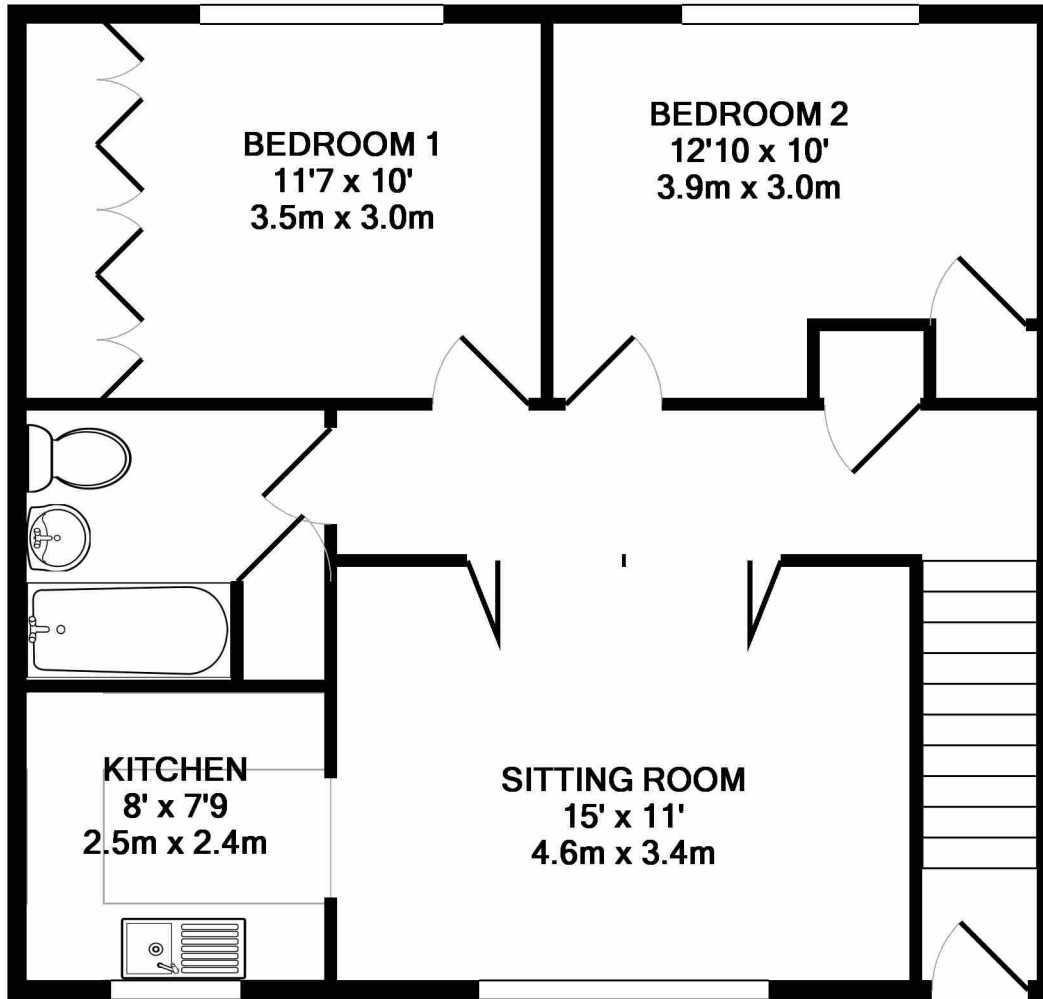
- 2 double bedrooms
- Private entrance
- Bright reception
- Garage
- Communal gardens

Weybridge | 01932 854400 | [weybridge@winkworth.co.uk](mailto:weybridge@winkworth.co.uk)

**Winkworth**

Commercial

*winkworth.co.uk*



TOTAL APPROX. FLOOR AREA 659 SQ.FT. (61.2 SQ.M.)

Whilst every attempt has been made to ensure the accuracy of the floor plan contained here, measurements of doors, windows, rooms and any other items are approximate and no responsibility is taken for any error, omission, or mis-statement. This plan is for illustrative purposes only and should be used as such by any prospective purchaser. The services, systems and appliances shown have not been tested and no guarantee as to their operability or efficiency can be given

Made with Metropix ©2017

This floorplan is for illustration purposes only and is not to scale. The position and size of doors, windows, appliances and other features are approximate.

