



**RENAISSANCE SQUARE APARTMENTS, PALLADIAN GARDENS, LONDON, W4**  
**£1,875 PER MONTH**

**STUNNING APARTMNET IN CHISWICK'S MOST  
PRESTIGIOUS DEVELOPMENT**

Chiswick | 020 8994 7096 | [chiswick@winkworth.co.uk](mailto:chiswick@winkworth.co.uk)

Tenant Fees Apply: Details of fees for tenant referencing, tenancy agreement admin fees and renewal fees are available on the Winkworth website and the link can be found with the displayed rent for the property. Tenants should ensure they are fully conversant with these upfront fees and other costs that are involved at the outset of the tenancy before making an offer to rent and your local Winkworth office will provide written details upon request.

[winkworth.co.uk](http://winkworth.co.uk)

**Winkworth**

for every step...



## DESCRIPTION:

This expansive, luminous apartment is set within Chiswick's most exclusive and prestigious development.

The apartment benefits from a generous open plan kitchen-reception room, large double bedroom, lovely private terrace and storage aplenty throughout.

This secure gated development, characterised by the award-winning architecture, is one of West London's most desirable. With a gym, 24-hour concierge, bike storage, underground allocated parking and stunning landscaped gardens, Renaissance Square was built for comfort and luxury.

The location is perfect for enjoying the Chiswick lifestyle as well as commuting in and out of London via the A4 / M4.

**Winkworth**

for every step...

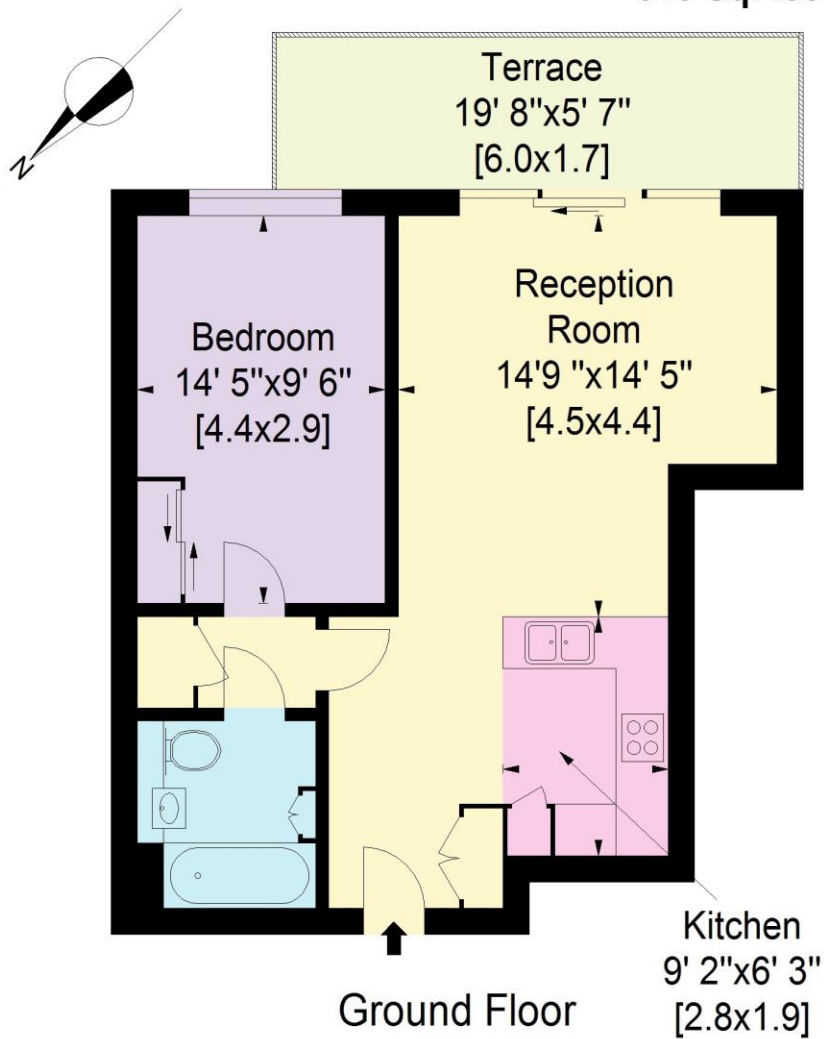


**Winkworth**

for every step...

# Renaissance Square Apartments, W4

Approximate Gross Internal Area : 50.9 Sq. metres  
548 Sq. feet



This floorplan is for illustration purposes only and may not be to scale. The position and size of doors, windows, appliances and other features are approximate.

Chiswick | 020 8994 7096 | [chiswick@winkworth.co.uk](mailto:chiswick@winkworth.co.uk)

**Winkworth**

for every step...

[winkworth.co.uk](http://winkworth.co.uk)

Winkworth wishes to inform prospective buyers and tenants that these particulars are a guide and act as information only. All our details are given in good faith and believed to be correct at the time of printing but they don't form part of an offer or contract. No Winkworth employee has authority to make or give any representation or warranty in relation to this property. All fixtures and fittings, whether fitted or not are deemed removable by the vendor unless stated otherwise and room sizes are measured between internal wall surfaces, including furnishings.