



SUNDERLAND TERRACE, LONDON, W2
£595 PER WEEK (£2,578.33 PCM) UNFURNISHED

A LOVELY BRIGHT AND SPACIOUS FIRST FLOOR FLAT WITH A PRIVATE BALCONY

Notting Hill Lettings | 0207 727 3227 | nottinghill@winkworth.co.uk

Winkworth

for every step...

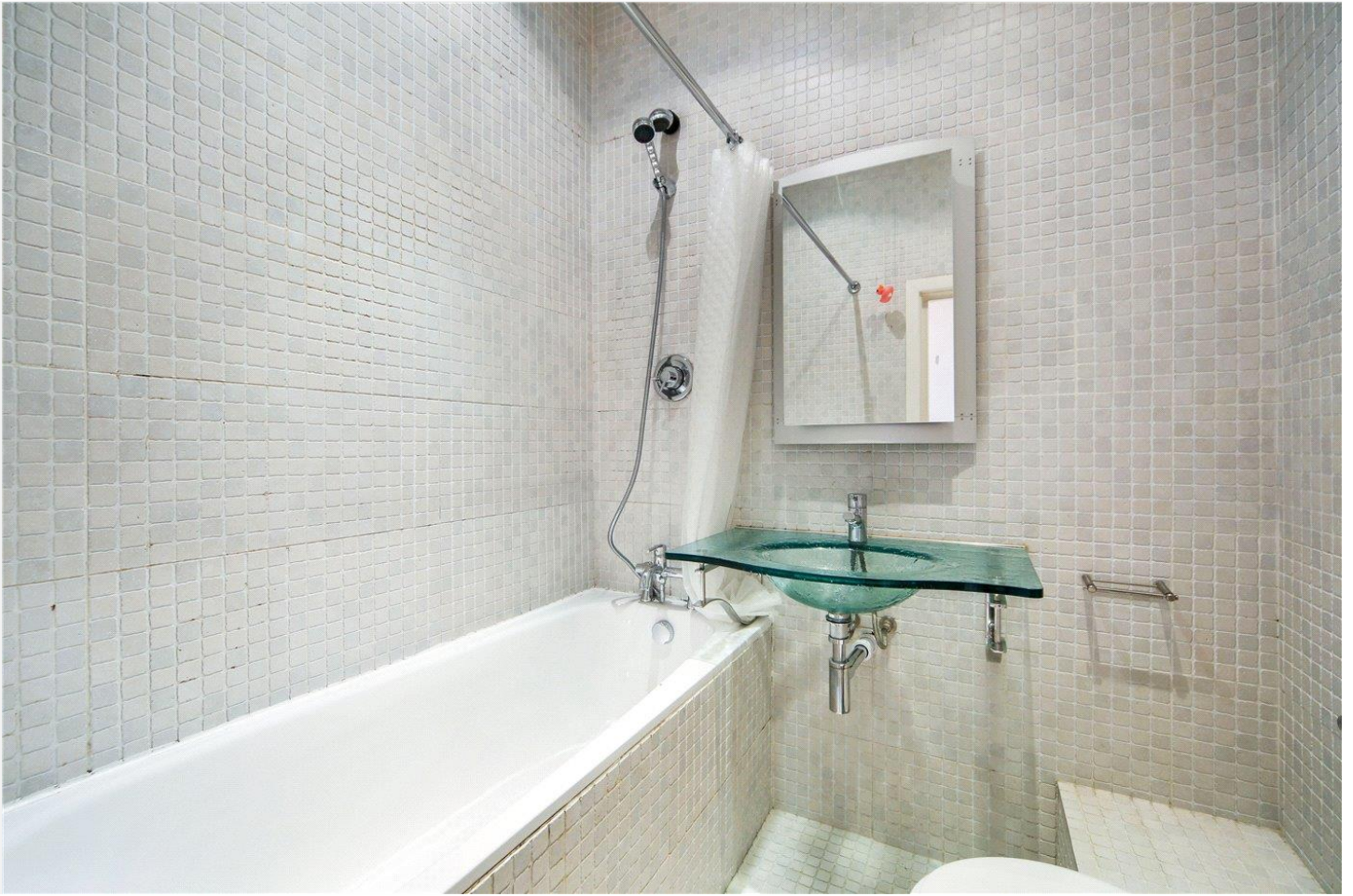
winkworth.co.uk



DESCRIPTION:

A lovely bright one-bedroom flat on the first floor of this pretty period conversion along a quiet tree lined residential street. The property has one double bedroom located at the back of the property with built in storage along one wall, one bathroom, an extremely spacious open plan, modern stainless-steel kitchen and living room with floor to ceiling windows that lead out on to a private balcony. There are also wooden floors and high ceilings throughout. Available unfurnished and viewings are highly recommended.



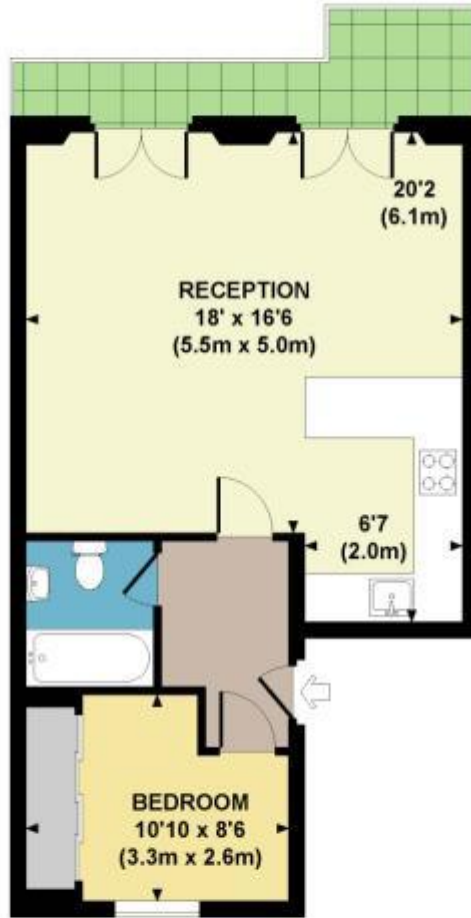


LOCATION:

Sunderland Terrace is a sought after, peaceful tree lined street to the North West of Central Notting Hill. The property is located on the corner of Alexander Street and Sunderland Terrace, a two-minute walk from the Royal Oak tube station and a ten-minute walk from Westbourne Grove.

SUNDERLAND TERRACE, W2

Approx. gross internal area
488 Sq Ft. / 45 Sq M.

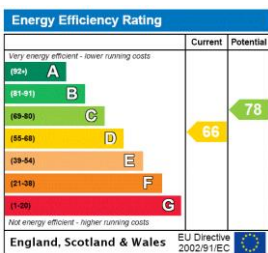


FIRST FLOOR



Every attempt has been made to ensure the accuracy of this floor plan however measurements are approximate and for illustration purposes only. Not to scale. Photography for plans & brochures: 020 727 2727 | www.dowlingjones.co.uk | www.dowlingjones.com | 020 727 2727 | 020 727 2727

This floorplan is for illustration purposes only and is not to scale. The position and size of doors, windows, appliances and other features are approximate.

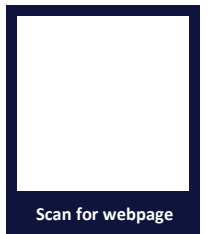


Deposit: £2,975

Holding Deposit:

Council Tax Band:

Where no figures are shown, we have been unable to ascertain the information. All figures that are shown were correct at the time of printing.



Notting Hill Lettings | 0207 727 3227 | nottinghill@winkworth.co.uk

Winkworth

for every step...

winkworth.co.uk

Winkworth wishes to inform prospective buyers and tenants that these particulars are a guide and act as information only. All our details are given in good faith and believed to be correct at the time of printing but they don't form part of an offer or contract. No Winkworth employee has authority to make or give any representation or warranty in relation to this property. All fixtures and fittings, whether fitted or not are deemed removable by the vendor unless stated otherwise and room sizes are measured between internal wall surfaces, including furnishings.