



GROVE PARK, CAMBERWELL, SE5  
£500,000 SHARE OF FREEHOLD

THIS ELEGANT TWO DOUBLE BEDROOM  
GROUND FLOOR FLAT IS OFFERED TO THE  
MARKET WITH A SHARE OF THE FREEHOLD.

Dulwich | 020 8299 2722 | [dulwich@winkworth.co.uk](mailto:dulwich@winkworth.co.uk)

**Winkworth**

[winkworth.co.uk](http://winkworth.co.uk)

See things differently





## DESCRIPTION:

An elegant, two double bedroom flat situated on one of the most sought after roads in SE5. Set within a handsome double fronted building is this charming and elegant two double bedroom flat. The property comprises a spacious reception with a large square bay with bespoke windows and high ceilings, compact kitchen offering plenty of counter space, built in appliances and lots of storage. To the rear are two double bedrooms both boasting private balconies and a bathroom with a large walk-in shower. The flat also comes with an underground parking space for one car, a spacious south facing communal garden and an intercom system. The location provides very easy access to either Denmark Hill station or Peckham Rye, both situated on the overground. School catchments and nurseries are all within a short walk. This is a stunning flat in a highly sought after location and early viewings are highly advised.

## AT A GLANCE

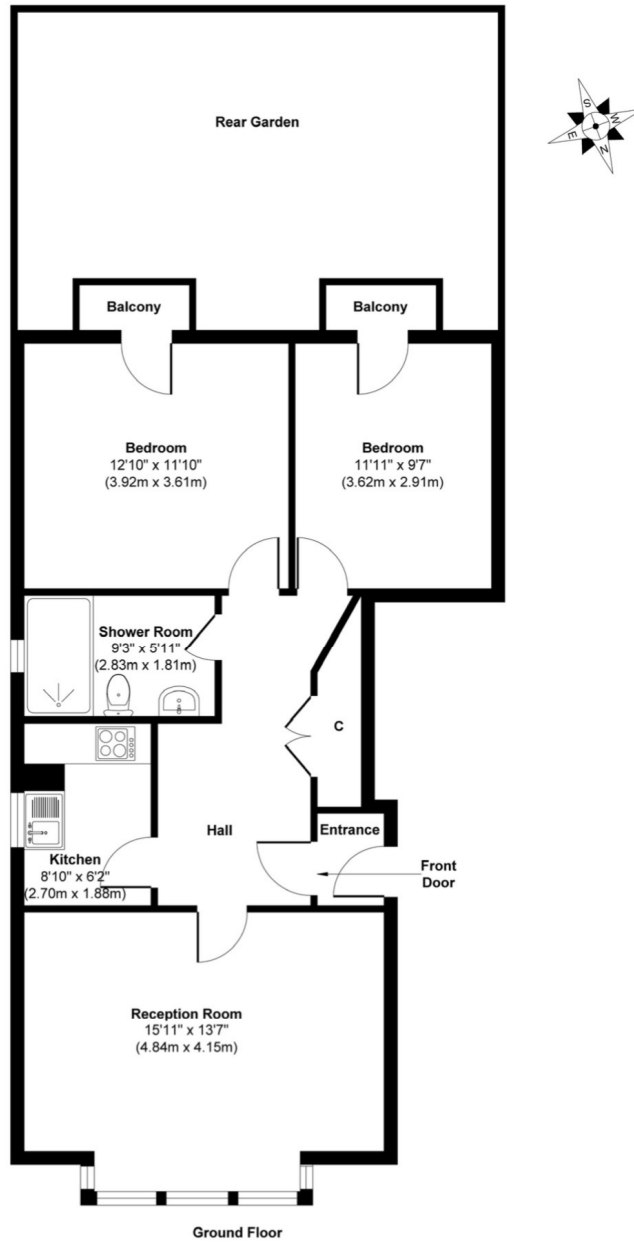
- Two Double Bedrooms
- Ground Floor Flat
- Modern Kitchen
- Spacious Reception Room
- Shower Room
- Private Balconies and a Communal Garden
- Underground Parking Space For One Car
- Share Of Freehold







## Grove Park



**Approx. Gross Internal Floor Area 758 sq. ft / 70.42 sq. m**

Illustration for identification purposes only, measurements are approximate, not to scale.  
Produced by Elements Property

This floorplan is for illustration purposes only and is not to scale. The position and size of doors, windows, appliances and other features are approximate.

## EPC TO BE ADDED

Dulwich | 020 8299 2722 | [dulwich@winkworth.co.uk](mailto:dulwich@winkworth.co.uk)

# Winkworth

[winkworth.co.uk](http://winkworth.co.uk)

See things differently

Winkworth wishes to inform prospective buyers and tenants that these particulars are a guide and act as information only. All our details are given in good faith and believed to be correct at the time of printing but they don't form part of an offer or contract. No Winkworth employee has authority to make or give any representation or warranty in relation to this property. All fixtures and fittings, whether fitted or not are deemed removable by the vendor unless stated otherwise and room sizes are measured between internal wall surfaces, including furnishings.