



**PICKETS CLOSE, BUSHEY, HERTFORDSHIRE, WD23**  
**£2,250 PER MONTH UNFURNISHED**

## **THIS WELL-PRESENTED EXTENDED THREE BEDROOM SEMI-DETACHED FAMILY HOME**

**Borehamwood | 020 8953 8899 | borehamwood@winkworth.co.uk**

Tenant Fees Apply: Details of fees for tenant referencing, tenancy agreement admin fees and renewal fees are available on the Winkworth website and the link can be found with the displayed rent for the property. Tenants should ensure they are fully conversant with these upfront fees and other costs that are involved at the outset of the tenancy before making an offer to rent and your local Winkworth office will provide written details upon request.

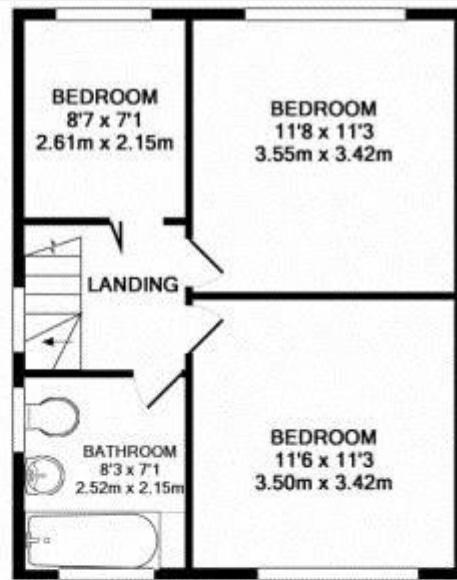
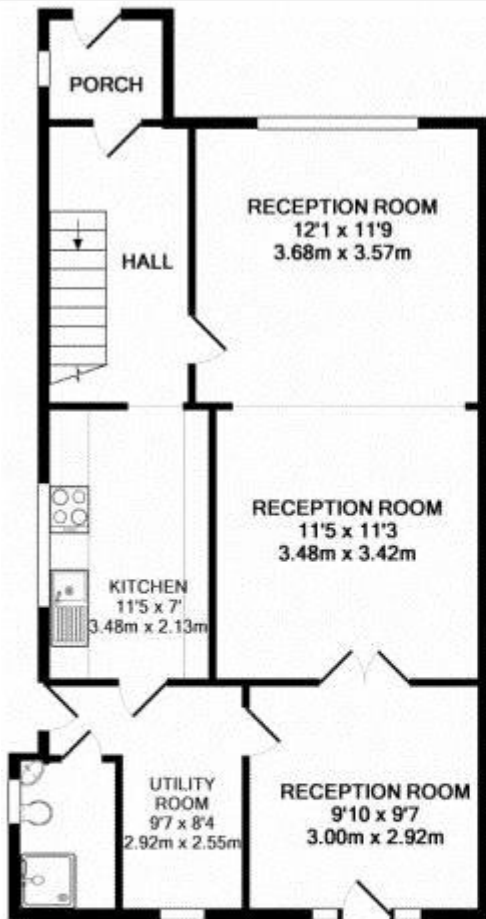


**DESCRIPTION:**

**AT A GLANCE**







GROUND FLOOR

1ST FLOOR

**PICKETS CLOSE**

Whilst every attempt has been made to ensure the accuracy of the floor plan contained here, measurements of doors, windows, rooms and any other items are approximate and no responsibility is taken for any error, omission, or mis-statement. This plan is for illustrative purposes only and should be used as such by any prospective purchaser. The services, systems and appliances shown have not been tested and no guarantee as to their operability or efficiency can be given.  
 Made with Metropix ©2016

This floorplan is for illustration purposes only and is not to scale. The position and size of doors, windows, appliances and other features are approximate.

**Deposit:** £2,596.15

**Holding Deposit:**

**Council Tax Band:** E

Where no figures are shown, we have been unable to ascertain the information. All figures that are shown were correct at the time of printing.

