



KING STREET MEWS, LONDON, N2
£360,000 LEASEHOLD

A ONE BEDROOM, GROUND FLOOR CONVERSION FLAT.

Finchley | 020 8349 3388 | finchley@winkworth.co.uk



for every step...

winkworth.co.uk



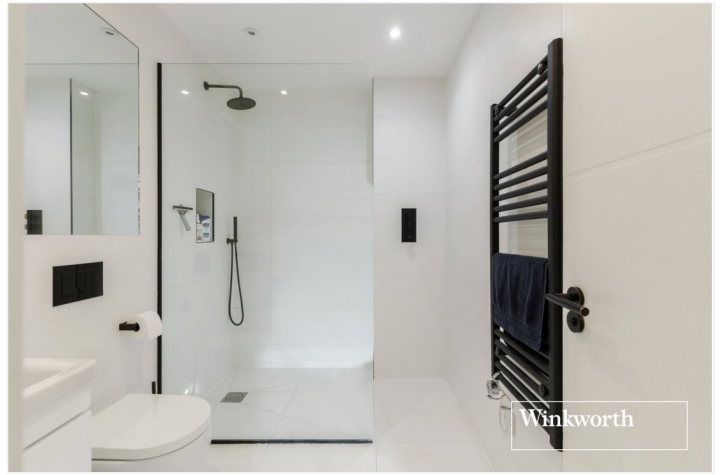
DESCRIPTION:

A beautifully presented ground floor flat, converted from a former workshop, situated within a popular Mews, in East Finchley. The property benefits from high ceilings, integral appliances within the fitted kitchen, hardwood flooring, double glazing, underfloor heating in the bathroom. The flat is serviced by its own entrance. The property also benefits from being situated within 0.7 miles walking distance from East Finchley Tube Station and shopping facilities. This beautiful apartment is also being offered on a chain free basis and an internal inspection is highly recommended.

AT A GLANCE

- One Bedroom
- Ground Floor
- Own Entrance
- Double Glazing
- Gas Central Heating





King Street Mews, N2
 Approx. Gross Internal Floor Area 457 sq. ft / 42.48 sq. m



GROUND FLOOR

All measurements of walls, doors, windows, fittings and appliances, including their size and location, are shown as standard sizes and do not constitute any warranty or representation by the seller, their agent or CP Creative. Any intending purchaser must satisfy himself by inspection or otherwise as to the correctness of the information contained in these plans. This plan is for illustrative purposes only and should be used as such by any prospective purchasers.

Winkworth

This floorplan is for illustration purposes only and is not to scale. The position and size of doors, windows, appliances and other features are approximate.

Tenure: Leasehold

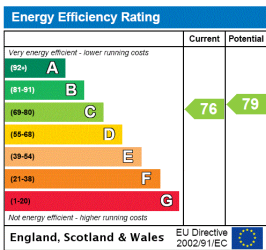
Term: 120 year and 10 months

Service Charge: £0 per annum

Ground Rent: £ 300 Annually (subject to increase)

Council Tax Band: A

Where no figures are shown, we have been unable to ascertain the information. All figures that are shown were correct at the time of printing.



Winkworth

for every step...

Finchley | 020 8349 3388 | finchley@winkworth.co.uk

winkworth.co.uk

Winkworth wishes to inform prospective buyers and tenants that these particulars are a guide and act as information only. All our details are given in good faith and believed to be correct at the time of printing but they don't form part of an offer or contract. No Winkworth employee has authority to make or give any representation or warranty in relation to this property. All fixtures and fittings, whether fitted or not are deemed removable by the vendor unless stated otherwise and room sizes are measured between internal wall surfaces, including furnishings.