



PLOT 338 THE WILLOWS, MUSSELBURGH WAY, BOURNE, PE10 0XY
£294,995 FREEHOLD





MUSSELBURGH WAY, BOURNE, PE10 OXY.

SAVE OVER £21,000 - 5% TOWARDS YOUR MOVE + UPGRADES THROUGHOUT INCLUDING A FULLY INTEGRATED KITCHEN UPGRADE + FLOORING PACKAGE + SHOWER OVER YOUR BATH. Winkworth are delighted to offer for sale this brand new four bedroom semi detached family home built by David Wilson Homes that is built and ready to move into now. The property offers excellent accommodation benefiting from, open plan kitchen/dining room, study/bedroom four and downstairs cloakroom. On the first floor there is a lounge overlooking the green and master bedroom with en-suite with the top floor boasting two further bedrooms and a family bathroom. Outside there is a private driveway leading to a single garage plus a fully enclosed lawned rear garden. Please call 01778 392807 for more information.

2

Bathroom - 2000mm x 1826mm (6'6" x 5'11")

Bedroom 2 - 4160mm x 4062mm (13'7" x 13'3")

Bedroom 3 - 4160mm x 3255mm (13'7" x 10'8")

1

Bedroom 1 - 4160mm x 3318mm (13'7" x 10'10")

Ensuite 1 - 1838mm x 1927mm (6'0" x 6'3")

Lounge - 4160mm x 3255mm (13'7" x 10'8")

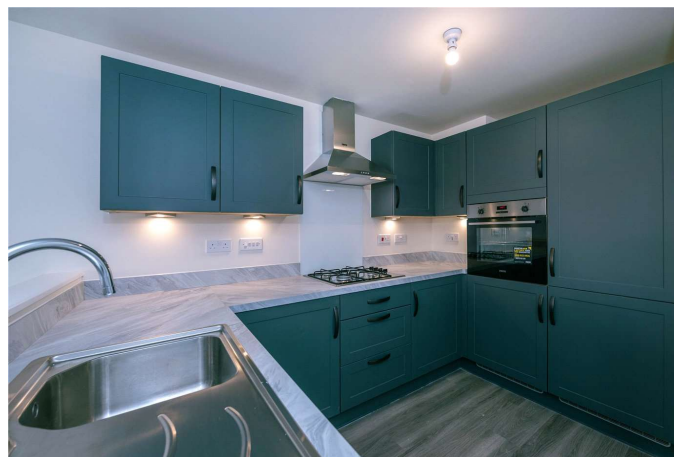
G

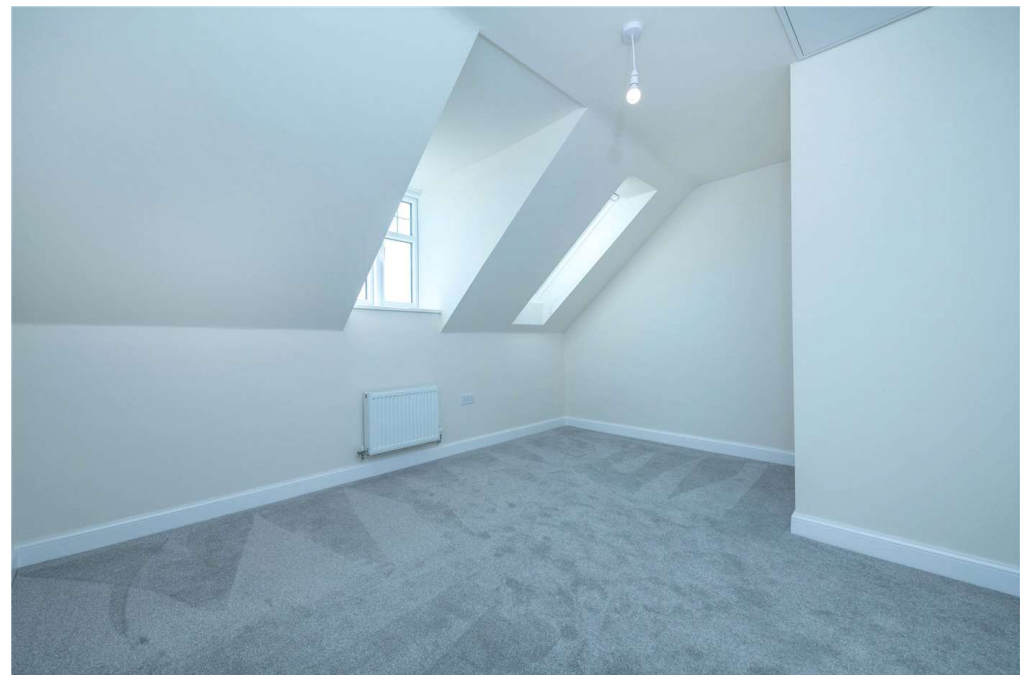
Family / Dining - 4160mm x 4481mm (13'7" x 14'8")

Kitchen - 3070mm x 3070mm (10'0" x 10'0")

Study Downstairs - 2396mm x 1959mm (7'10" x 6'5")

WC - 1614mm x 968mm (5'3" x 3'2")







Bourne | 01778392807 | bourne@winkworth.co.uk

winkworth.co.uk

Winkworth wishes to inform prospective buyers and tenants that these particulars are a guide and act as information only. All our details are given in good faith and believed to be correct at the time of printing but they don't form part of an offer or contract. No Winkworth employee has authority to make or give any representation or warranty in relation to this property. All fixtures and fittings, whether fitted or not are deemed removable by the vendor unless stated otherwise and room sizes are measured between internal wall surfaces, including furnishings.

