



**WOLBOROUGH GARDENS, BRIXHAM,  
£1,100,000 FREEHOLD**

**A SPACIOUS FOUR BEDROOMED DETACHED  
HOME WITH BREATHTAKING SEA AND  
COASTAL VIEWS.**

Dartmouth | 01803 832288 | [dartmouth@winkworth.co.uk](mailto:dartmouth@winkworth.co.uk) 3a Market Street, Dartmouth, TQ6 9QE

**Winkworth**

for every step...

[winkworth.co.uk](http://winkworth.co.uk)



**SUMMARY:** A particularly spacious detached home enjoying enviable harbour sea and bay views.

**DIRECTIONS:** From Brixham town centre head towards Berry Head along King Street, keeping the harbour to your left. At the mini roundabout turn right and proceed up Ranscombe Road. Continue up the hill, turning left onto Wall Park Road. After approximately ¼ of a mile, turn left onto Heath Road, where the property will be found on the right.

**DESCRIPTION:** A stunning detached house located in one of Brixham's most desirable residential areas enjoying breathtaking sea and coastal views. The property was built in the 1980s and has been in the ownership of our clients since 1996. The accommodation is both spacious and versatile with excellent easily maintained private and sunny gardens.

This house is reverse level so the main living accommodation has the best of the views with the remainder of the accommodation on the lower ground floor. All four bedrooms are of a particularly good size and the open plan kitchen has access onto a large seaward facing sun terrace. There is a separate dining room also with access onto the terrace and the lounge is very spacious with a dual aspect enjoying the stunning views. The principal bedroom is served by a generous en-suite with separate shower. There is also a cloakroom with WC on this floor.

On the lower ground floor as well as the three further bedrooms and recently installed quality family bathroom, there is also a utility room with access to the outside.

The property has good privacy with some mature trees and stone walling and metal gates provide access onto the large driveway with parking for several vehicles. There's also space for a motorhome or boat if required. The large detached garage has excellent storage and workshop space with additional storage in the eaves. The rear garden is to the seaward side and is very open but again with privacy. There was originally a swimming pool but this has previously been filled in providing very low maintenance area laid to paving and gravel.

Winkworth thoroughly recommend viewing this property to fully appreciate the size of accommodation on offer, it's views and it's outstanding position.

**POSTCODE:** TQ5 9DD

**EPC RATING:** D

**COUNCIL TAX BAND:** G

**SERVICES** - All mains services are connected.

**OWNERS COMMENTS:**

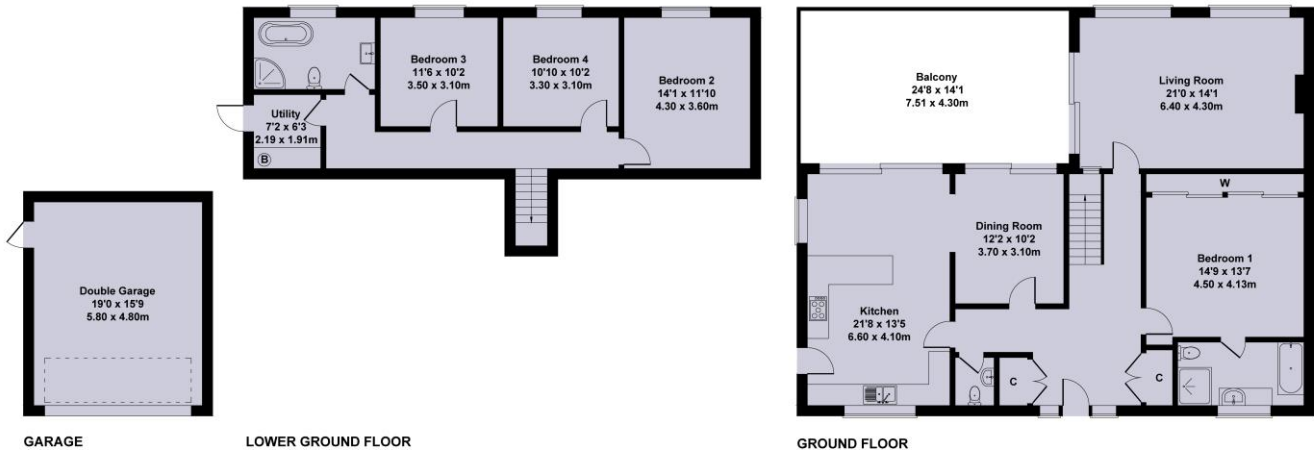
We have lived in our house since 1995 and have been very happy here, enjoying the lovely sea views, location and a very happy family home. As the family have grown up, we feel it is time to down size and move on.

Whoever purchases our house, I'm sure will have as many happy years as we did.



# 1 Wolborough Gardens

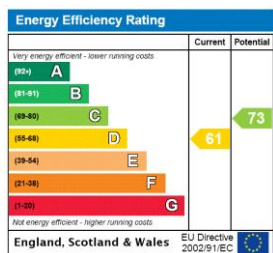
Approximate Gross Internal Area  
2293 sq ft - 213 sq m



Not to Scale. Produced by The Plan Portal 2024  
For Illustrative Purposes Only.



This floorplan is for illustration purposes only and is not to scale. The position and size of doors, windows, appliances and other features are approximate.



Tenure: Freehold

Council Tax Band: G

Where no figures are shown, we have been unable to ascertain the information. All figures that are shown were correct at the time of printing.

Dartmouth | 01803 832288 | dartmouth@winkworth.co.uk  
3a Market Street, Dartmouth, TQ6 9QE



for every step...

winkworth.co.uk

Winkworth wishes to inform prospective buyers and tenants that these particulars are a guide and act as information only. All our details are given in good faith and believed to be correct at the time of printing but they don't form part of an offer or contract. No Winkworth employee has authority to make or give any representation or warranty in relation to this property. All fixtures and fittings, whether fitted or not are deemed removable by the vendor unless stated otherwise and room sizes are measured between internal wall surfaces, including furnishings.