

Winkworth

3 Norfolk Mansions, Santos Road, London, SW18 1NU





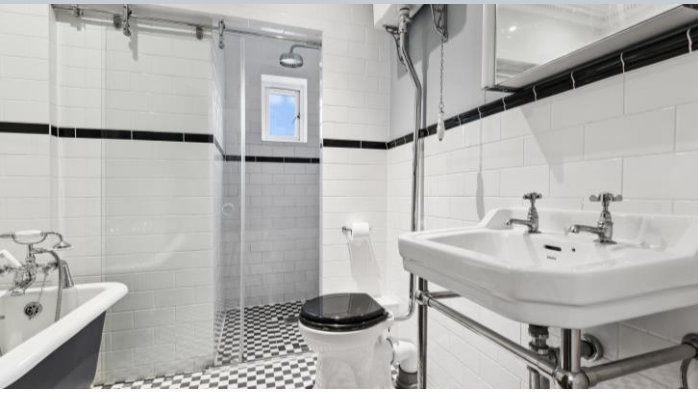
An incredibly spacious 3-bedroom flat offering 1014 sq. ft., in this popular East Putney location.

The property has undergone a high-end refurbishment including soundproofing, Oak flooring, and stylish tiled flooring. There are period features throughout that have been incredibly well-maintained and each fireplace has either been restored or replaced. The flat also benefits from a brand-new electrical system, heating and water system, double glazed wooden framed windows, and a brand-new kitchen boasting a thick granite top, and complete with Fired Earth tiles.

The three bedrooms offer flexible accommodation, serviced by a luxury bathroom complete with a wet room shower and free-standing bath. Both the kitchen and bathroom are fitted with underfloor heating.

Above the flat is significant storage offering the same square footage as the flat. On the ground floor below, there is access to a green and peaceful communal garden for residents to use at their leisure.

Norfolk Mansion is located on Santos Road and is within a short walk of East Putney underground, Wandsworth Town, Putney Mainline, and the River Thames taxi service.



Features

- 3 Bedrooms
- Communal Gardens
- 182 Year Lease
- Chain Free
- Service Charge £2,800 p.a.
- Ground Rent £350 p.a.

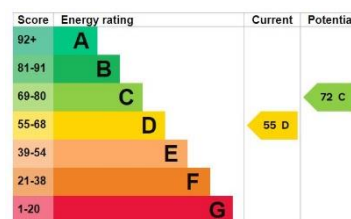
Leasehold

Internal area

Total 1014 sq. ft / 94.20 sq. m

Price

£695,000



Norfolk Mansions, Santos Road, SW18

Approx. Gross Internal Area 94.20 sq m / 1014 sq ft



Not to scale, for guidance only and must not be relied upon as a statement of fact.
All measurements and areas are approximate only

Winkworth