



35 SHEPHERDS MOUNT

COMPTON NEWBURY BERKSHIRE RG20 6QY

A spacious four double bedroom detached family home in the heart of Compton.

As you enter the front porch of the property you are greeted with a spacious dining room. From here you have the kitchen, which offers beautiful garden views. The living room features a lovely fireplace, perfect for those colder months.

To the rear of the property is an extension, offering a second reception room with bifold doors onto the patio area of the garden. To the right of this room is a study, downstairs W/C and access to the garage.

On the first floor there is a main bedroom with ensuite shower room, three further double bedrooms and a family bathroom.

To the front of the property you have a large driveway and a well maintained front garden. There is also a single garage with an outbuilding to the side.

To the rear you have a wraparound garden with a large vegetable patch, a generous patio area and the rest being mainly laid to lawn.



Winkworth

AT A GLANCE

- 1807 Square feet/ 168 square metres
- Four double bedrooms
- Family bathroom with Ensuite
- Downstairs W/C
- Sitting room with woodburner
- Dining room
- Kitchen
- Sun Room
- Home office
- Garage
- Wrap around garden
- Off road parking
- Downs School catchment

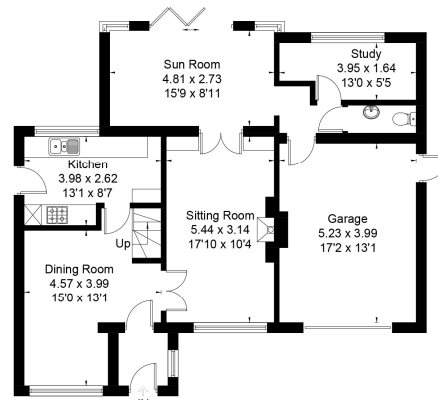
UTILITIES

Oil Fired Central Heating
Mains drainage
Council Tax Band D
EPC Rating D

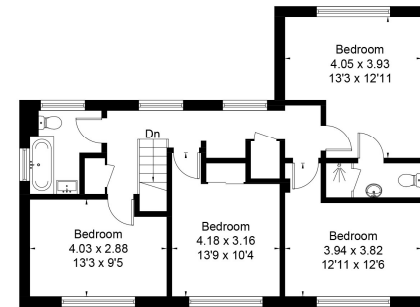
SITUATION

The property is situated within this sought after downland village, which has shop and pub and the highly sought after Downs School.

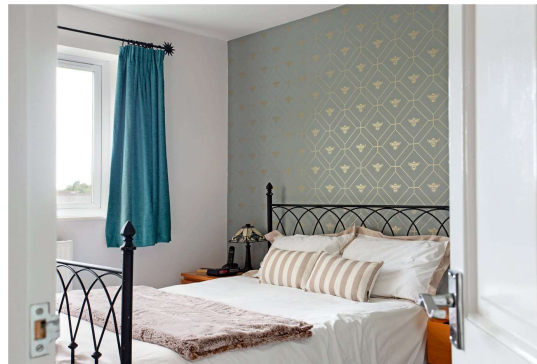
Approximate Floor Area = 146.7 sq m / 1579 sq ft
Garage = 21.2 sq m / 228 sq ft
Total = 167.9 sq m / 1807 sq ft



Ground Floor



First Floor



Newbury Office

43 Northbrook Street, Newbury, Berkshire RG14 1DT
01635 552552 | newbury@winkworth.co.uk

winkworth.co.uk/newbury

Winkworth

See things differently.