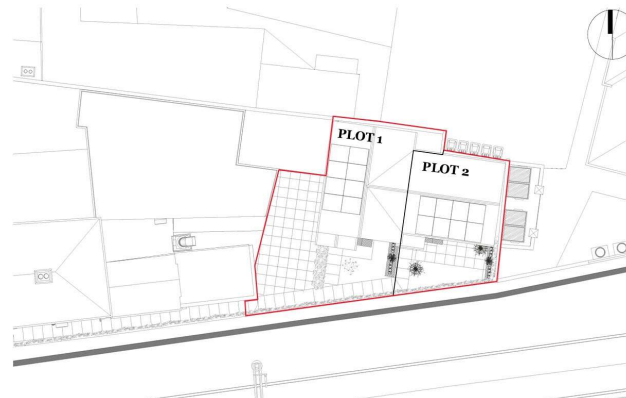


## LAND TO REAR OF 81, BARTHOLOMEW STREET RG14 5EE

A fantastic opportunity to acquire land with **PLANNING PERMISSION** for a pair of one bedroom semi-detached houses in the **TOWN CENTRE**.

Located within Newbury town centre is a parcel of land with planning permission for a pair of semi-detached houses with private south facing gardens, all within a 3-minute walk to the train station.

Planning permission was granted on Thu 19 Sep 2024, West Berkshire Council application 23/02266/FUL. The decision notice and relative documents can be viewed via the West Berkshire website.



**Winkworth**

## AT A GLANCE

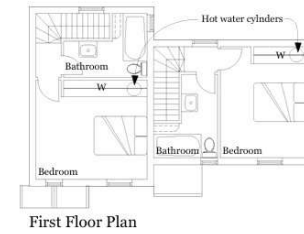
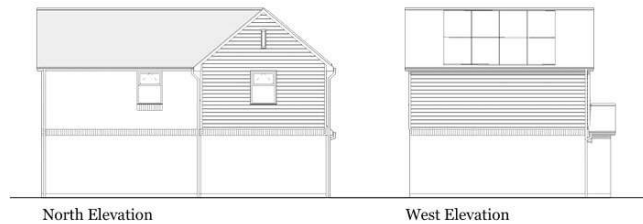
- Planning Permission Granted
- Town Centre Location
- Pair of One Bedroom Semi's
- Private Gardens

## SITUATION

Newbury town centre is within a few minutes' walk of the railway station which has fantastic links to London Paddington. The town centre offers various restaurants and facilities as well as a comprehensive range of shops.

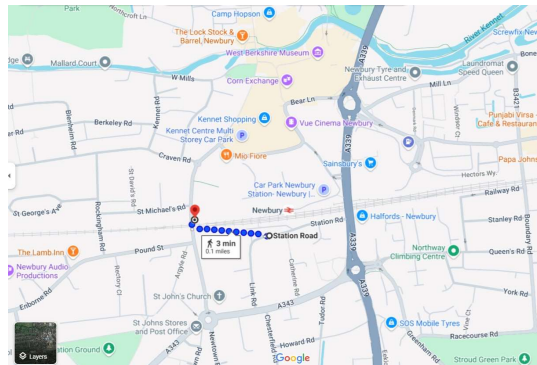
## DIRECTIONS

What3words///rugs.vibes.game



Floor Areas PLOT 1
Ground Floor - 25M <sup>2</sup>
First Floor - 24M <sup>2</sup>
Total 49M <sup>2</sup>

Floor Areas PLOT 2
Ground Floor - 23M <sup>2</sup>
First Floor - 22M <sup>2</sup>
Total 45M <sup>2</sup>



## Newbury Office

43 Northbrook Street, Newbury, Berkshire RG14 1DT  
01635 552552 | newbury@winkworth.co.uk

[winkworth.co.uk/newbury](http://winkworth.co.uk/newbury)

# Winkworth

See things differently.