



Ufford Street, London, SE1

£950,000 Freehold

An opportunity to acquire a three-bedroom house on the ever-popular Ufford Street, ideally located between Southwark and Waterloo.

LOCATION

Ufford Street is just south of The Cut, between Blackfriars and Waterloo Road and situated within the Congestion Zone.

DESCRIPTION

The property is in good condition throughout but could do with updating.

The reception room to the front has two double glazed sash windows looking onto the quiet street.

As you walk to the back of the house you will find a large eat-in kitchen, which is has been recently installed and in good order.

In the rear addition there is a bathroom and also access to the garden, which is a charming space.

The first floor benefits from an additional room over the rear addition on the ground floor, which makes this house particularly flexible. There are only eight of the thirty houses on Ufford Street have this double height rear addition. It is currently laid out as three double bedrooms.

The house has plenty of potential, it is possible to convert the loft, build a side return extension and also move the staircase on the ground floor to make it open plan. Of course all of this is STPP but many other houses on the road have done these works.

LOCAL AUTHORITY

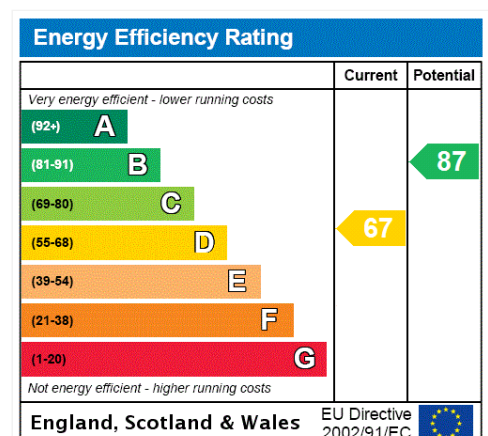
Lambeth

TENURE

Freehold

DIRECTIONS

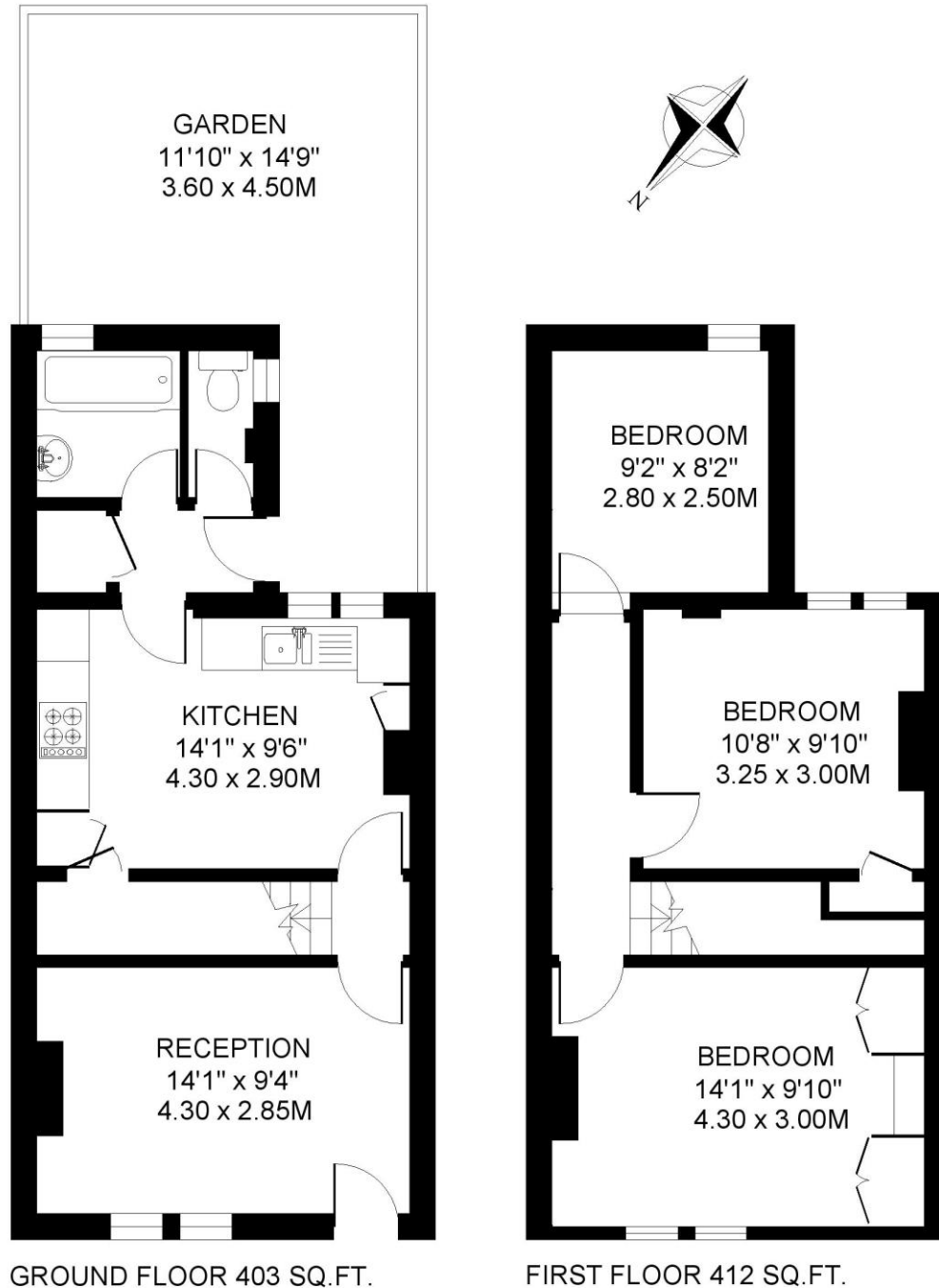
Waterloo Mainline Station (National Rail, Northern, Bakerloo, Jubilee and Waterloo & City Line) is mere 390 metres (0.24 miles) away. Southwark Underground Station (Jubilee Line) is approximately 340 metres (0.21 miles) away.





UFFORD STREET. SE1
3 BEDROOM HOUSE

Approximate gross floor area
815 SQ.FT / 75.7 SQ.M.



This floorplan is for illustration purposes only and is not to scale. The position and size of doors, windows, appliances and other features are approximate.

Copyright: These plans should not be reproduced by any other person, without permission.
Floorplan produced for Winkworth by Floorplanners 07801 228850

Kennington | 020 7587 0600 | kennington@winkworth.co.uk