

Lorrimore Square, London, SE17

£525,000 Leasehold

A stunning three bedroom flat with a 1,200 sqft roof terrace and a private front door, situated between Kennington Park Road and Walworth Road. EPC Rating D.

LOCATION

Lorrimore Square is located just off Chapter Road. Behind the square is the beautiful Pasley Park and a short walk away is Kennington Station.

DESCRIPTION

The entrance to the flat is on the raised ground floor. On entry through the private front door you have the reception room to your left. The reception room has lovely big windows at either end, allowing light to flow through the flat, keeping the room full of natural light. There is space for a comfortable size sofa, as well as a dining table. The floors throughout the reception room and hallway are cork, providing extra insulation.

Renovation works to the kitchen, and the walls and floors in the living room and hallway were carried out only two years ago in 2021.

The kitchen is of great quality with beautifully tiled floor and underfloor heating. The cupboards are finished with a charcoal black and a stylish white tiled splash back which complement each other well. The kitchen has a gas hob, double stacked ovens, space for washing machine and fridge, and plenty of storage.

Off the kitchen is access to the simply enormous roof terrace, which offers enough space for sitting, dining and even growing vegetables.

The bathroom has been refurbished with a bath and overhead shower, tiling and a heated towel rail.

There are two double bedrooms of a similar size with added built in storage and a third bedroom capable fit a small double or alternatively can be used as an office space.

LOCAL AUTHORITY

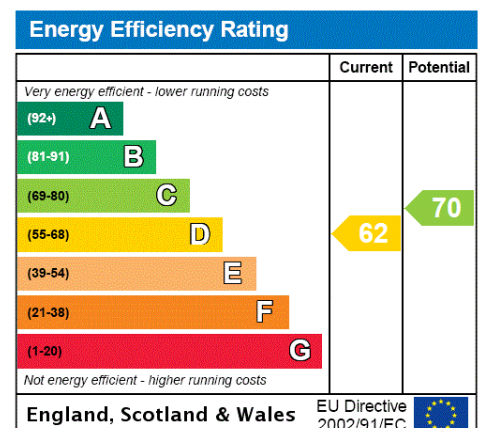
Southwark Council, London
Council tax band C

TENURE

Leasehold - 125 years from 4 August 2003
Ground rent: £10 per annum
Service charge: Circa £1,400 per annum

DIRECTIONS

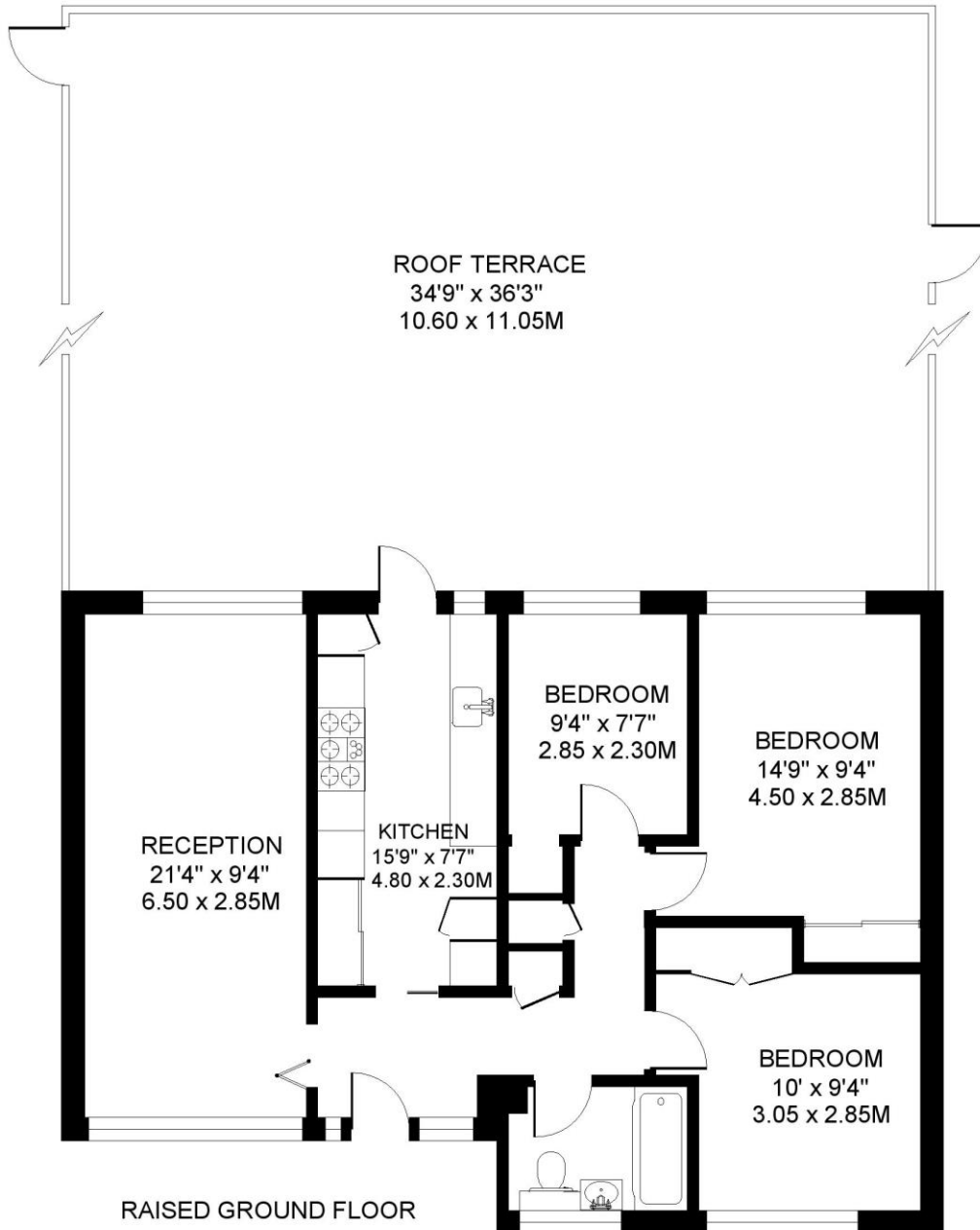
Kennington station is 0.3 miles away (7 minute walk). Walworth Road is 0.4 Miles away allowing access to bus routes into central London.





LORRIMORE SQUARE SE17
3 BEDROOM FLAT

Approximate gross floor area
818 SQ.FT. / 76 SQ.M.



This floorplan is for illustration purposes only and is not to scale. The position and size of doors, windows, appliances and other features are approximate.

Kennington | 020 7587 0600 | kennington@winkworth.co.uk