



**HITHER GREEN LANE, HITHER GREEN, SE13 6TG
OFFERS IN EXCESS OF £425,000 LEASEHOLD**

**TWO DOUBLE BEDROOM, PENTHOUSE APARTMENT
SPANNING 686 SQ FT. AND WITH VIEWS OF THE LONDON
SKYLINE LOCATED WITHIN THIS IMMENSELY POPULAR
FORMER HITHER GREEN HOSPITAL DEVELOPMENT, SOLD
CHAIN FREE.**

Blackheath | 0208 8520999 | blackheath@winkworth.co.uk

Winkworth

winkworth.co.uk

See things differently



DESCRIPTION:

Found on the fifth (top) floor, with a lift, the property briefly comprises of; a huge (12'8x19') reception room, off of which is the open plan kitchen. Also from the reception room you have access onto the wrap around balcony with stunning views over London.

There are two large double bedrooms, the master (10'6x10'1) also boasts an additional balcony, there is a modern family bathroom with a good amount of storage throughout the apartment. The property also has an underground car parking space. This is a great apartment in a sought-after position within the development and your immediate viewing is essential.

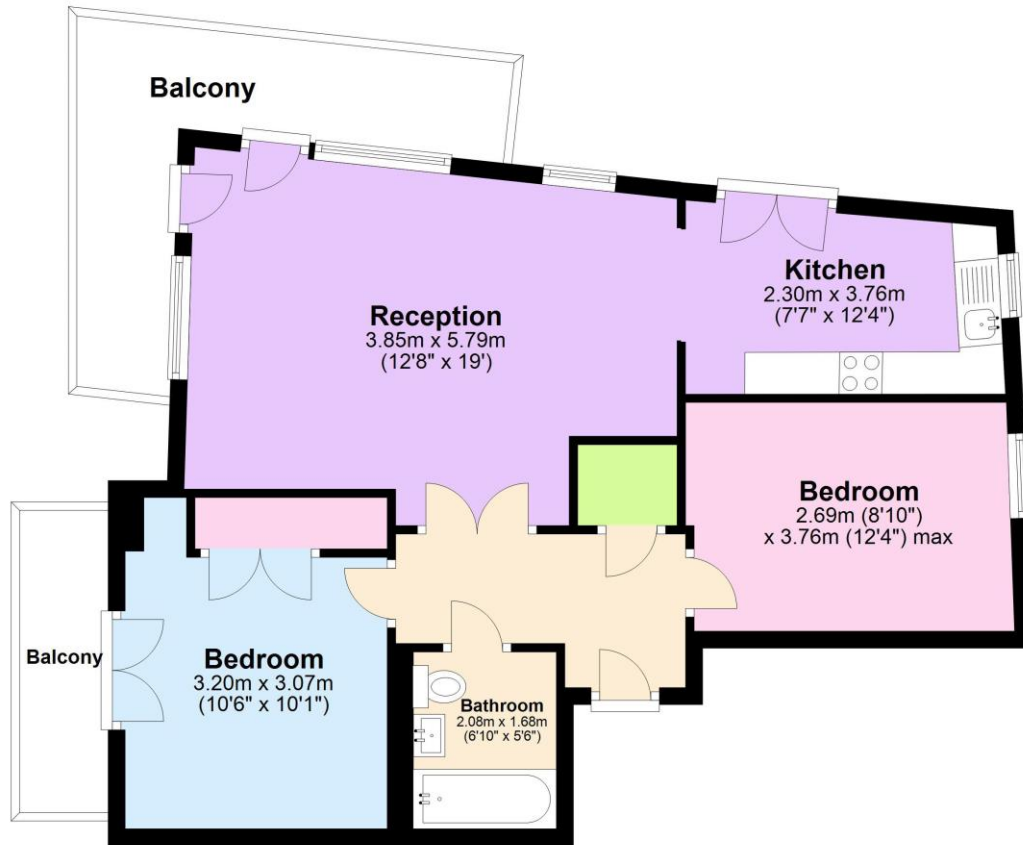
Catalpa Court is part of the old Hither Green Hospital redevelopment with a Tesco local and a 24 hour gym on site. The property is very close to Hither Green station (0.25 miles – London Bridge 11 mins), and within easy reach of Ladywell Station, (0.88 miles), Lewisham Station & DLR, (1.25 miles) and both Catford and Catford Bridge Stations (0.98 miles). The popular open spaces of Manor House Gardens and Mountsfield Park are a short walk with the popular Blackheath Village just 1.2 miles away. The vibrant centre of Hither Green includes a Sainsbury's Local, French Patisserie Cafe (La Delice), an incredible Deli and Bottle Shop (Found Hope Store), cocktail bar (Drink@Bob's) a florist (Otto's Greenhouse) and Italian restaurant and pizzeria (Saporo Vero), craft beer and chocolate shop (Park Fever) and gastropub The Station Hotel. Ladywell Village offers independent delis and shops, while Catford has a selection of pubs, an independent cinema and a regular food market. Lewisham has extensive shopping choices and is being enhanced by new investment, attracting new restaurants and amenities.





Fifth Floor

Approx. 63.8 sq. metres (686.2 sq. feet)



Total area: approx. 63.8 sq. metres (686.2 sq. feet)

This floorplan is for illustration purposes only and is not to scale. The position and size of doors, windows, appliances and other features are approximate. Any lease and service charge details have been provided by the vendor. Any interest party should have these checked by a solicitor as part of the purchase process.

Winkworth

winkworth.co.uk

See things differently

Winkworth wishes to inform prospective buyers and tenants that these particulars are a guide and act as information only. All our details are given in good faith and believed to be correct at the time of printing but they don't form part of an offer or contract. No Winkworth employee has authority to make or give any representation or warranty in relation to this property. All fixtures and fittings, whether fitted or not are deemed removable by the vendor unless stated otherwise and room sizes are measured between internal wall surfaces, including furnishings.