



Netherwood Road, Brook Green, W14

£499,950 Share of Freehold

An extremely well presented one bedroom flat on the raised ground floor of a mid-terrace Victorian house.

Reception Room | Kitchen | Bedroom | Bathroom | 557 Sq Ft / 52 Sq M | Council Tax Band D | EPC Rating Band C

Winkworth



LOCATION

The property is located towards the northern end of Netherwood Road, ideal for the numerous amenities on offer in not only Brook Green, but also Shepherds Bush. Westfield London is within easy reach, whilst the closest stations are Shepherds Bush (Central and Overground lines) and Hammersmith (Piccadilly, District, Hammersmith & City and Circle lines). The eagerly anticipated Olympia redevelopment is also just a short walk away.

DESCRIPTION

The flat offers well-proportioned accommodation, comprising reception room with bay window and fireplace, kitchen, bathroom and bedroom. The property further benefits from numerous period features and a good range of built in storage.

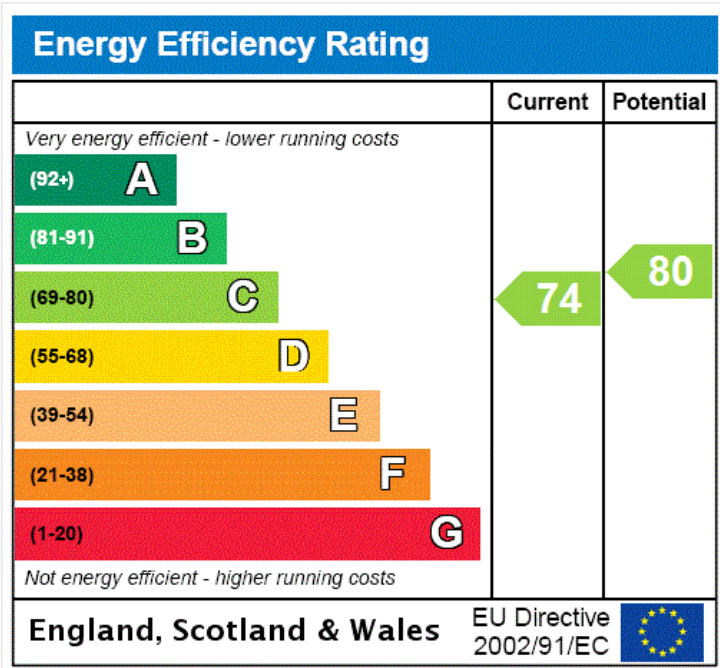


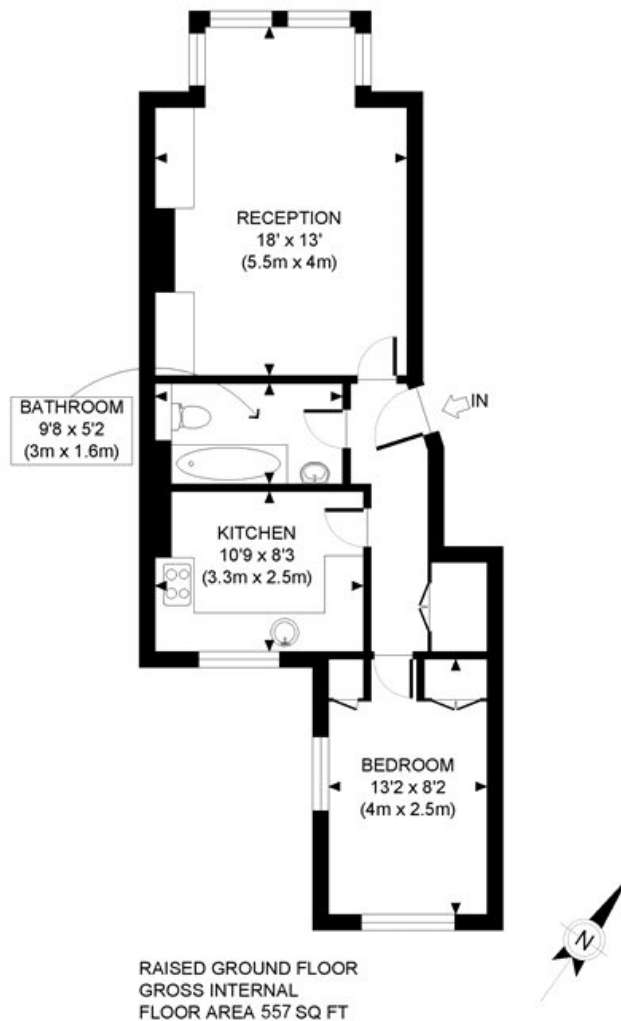


LOCAL AUTHORITY
Hammersmith & Fulham

TENURE
Share of Freehold.

PRICE: £499,950 Share of Freehold





APPROX. GROSS INTERNAL FLOOR AREA: 557 SQ FT/ 52 SQM

Winkworth

This plan is for illustrative purposes only and should be used as such by any prospective client. Whilst every attempt has been made to ensure the accuracy of the Floor Plan contained here, measurements of the doors, windows, rooms and any other items are approximate and no responsibility is taken for any errors, omissions, or misstatement. The services, systems and appliances shown have not been tested and no guarantee as to the operability or efficiency can be given.

PROPERTY PHOTO PLANS
THE TOP END OF PROPERTY MARKETING

The displayed square footage is taken from the floor plans with measurements created using the Royal Institute of Chartered Surveyors' Code of Practice for Measuring. These measurements are approximate and included for illustrative purposes only. Winkworth does not make any representation as to the accuracy of these measurements and you should seek to verify them for yourself. Winkworth accept no liability for any loss you may suffer if you rely on these measurements.

Hammersmith | 0207 371 4466 | hammersmith@winkworth.co.uk

Winkworth

for every step...

Under the Property Misdescriptions Act 1991, these Particulars are a guide and act as information only. All details are given in good faith and are believed to be correct at time of printing. Winkworth give no representation as to their accuracy and potential purchasers or tenants must satisfy themselves by inspection or otherwise as to their correctness. No employee of Winkworth has authority to make or give any representation or warranty in relation to this property.