



**Golf Links Road**

Ferndown, BH22 8BU

**Guide Price £1,400,000**

**Winkworth**



## GUIDE PRICE £1,400,000 FREEHOLD

This imposing four/five double bedroom detached family house sits proudly on a secluded, rarely available plot of approx half an acre overlooking the 18th fairway of Ferndown Championship Golf Course. A perfect family home with plenty of reception space to complement en-suite bedrooms and a wonderful garden that features an easy to maintain heated swimming pool.

Positioned on arguably Ferndown's most sought-after road, this well maintained 3500 sq ft home is immaculate throughout and enjoys views from the garden across the course as well as direct access via a rear gate.

In addition to off road parking for several vehicles there is an integral double garage with mezzanine floor above that would make an ideal home office/studio. **NO ONWARD CHAIN.**

Four/Five Double Bedrooms  
Secluded Garden Overlooking 18th Fairway With Direct Access To Golf Course  
Heated Swimming Pool  
Driveway For Several Vehicles  
Sought After Location  
Integral Double Garage With Mezzanine Studio/Games Room  
Solar Panels  
Guest Cloakroom  
No Onward Chain  
Lots Of Reception Space  
Utility Room  
Plentiful Bathrooms  
EPC B | Council Tax Band G

01202 434365

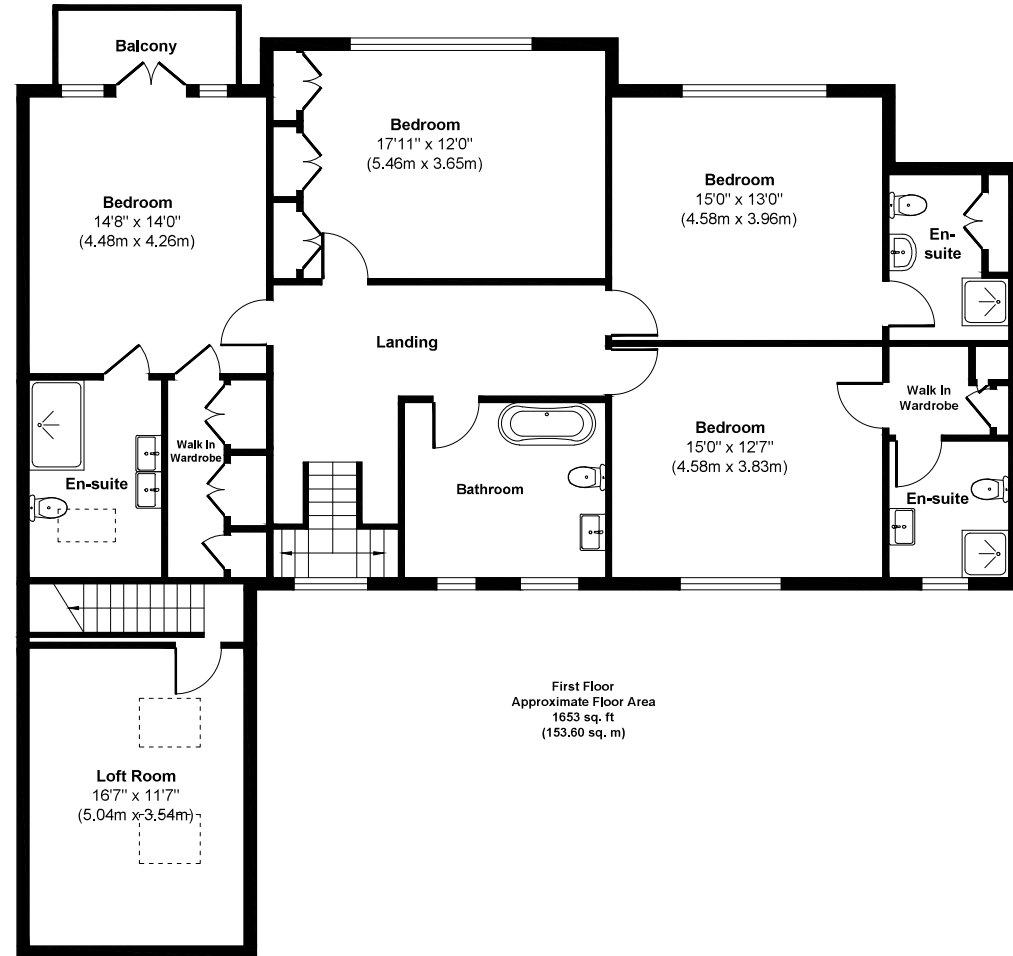
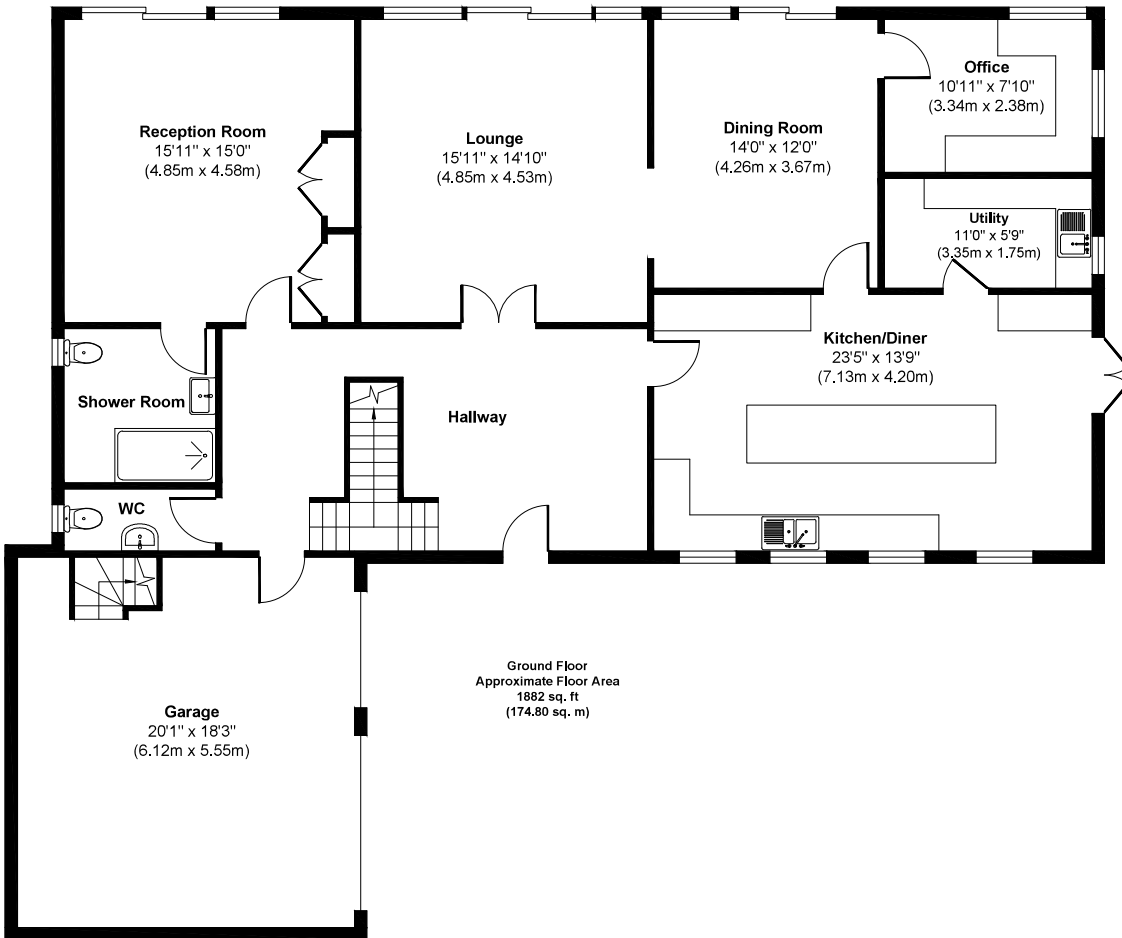
[ferndown@winkworth.co.uk](mailto:ferndown@winkworth.co.uk)







# Golf Links Road



**Approx. Gross Internal Floor Area 3535 sq. ft / 328.40 sq. m**  
Illustration for identification purposes only, measurements approximate and not to scale.



## LOCATION

Golf Links Road is a particularly sought after location, conveniently close to Ferndown town centre which has a range of amenities including an M&S Foodhall, independent Cafés, and restaurants. Within catchment for Ferndown Schools and walking distance of Ferndown Championship Golf Course which is located approx 500 metres away. There are bus routes within a short walk giving you easy access to Bournemouth, Wimborne and Poole, all of which have an excellent range of shops, bars, restaurants and leisure facilities. Award winning sandy beaches are just twenty minutes away and the A31 provides quick access to the New Forest, Southampton, London and beyond.

## Winkworth Ferndown

406 Ringwood Road, Ferndown, Dorset, BH22 9AU

01202 434365 | [ferndown@winkworth.co.uk](mailto:ferndown@winkworth.co.uk)

[winkworth.co.uk/ferndown](http://winkworth.co.uk/ferndown)

**Winkworth**