



PELHAM COURT, 145 FULHAM ROAD, CHELSEA, LONDON, SW3
£790 PER WEEK FURNISHED, PART FURNISHED, UNFURNISHED

A TWO BEDROOM FLAT LOOKING DIRECTLY OUT ON TO THE PRIVATE COMMUNAL GARDENS OF PELHAM COURT

Knightsbridge & Chelsea | 0207 589 6616 |

knightsbridge@winkworth.co.uk

Tenant Fees Apply: Details of fees for tenant referencing, tenancy agreement admin fees and renewal fees are available on the Winkworth website and the link can be found with the displayed rent for the property. Tenants should ensure they are fully conversant with these upfront fees and other costs that are involved at the outset of the tenancy before making an offer to rent and your local Winkworth office will provide written details upon request.



DESCRIPTION:

A spacious two bedroom flat looking directly out on to the private communal gardens of Pelham Court. Pelham Court is conveniently located opposite Pelham Crescent and moments from South Kensington and Knightsbridge.

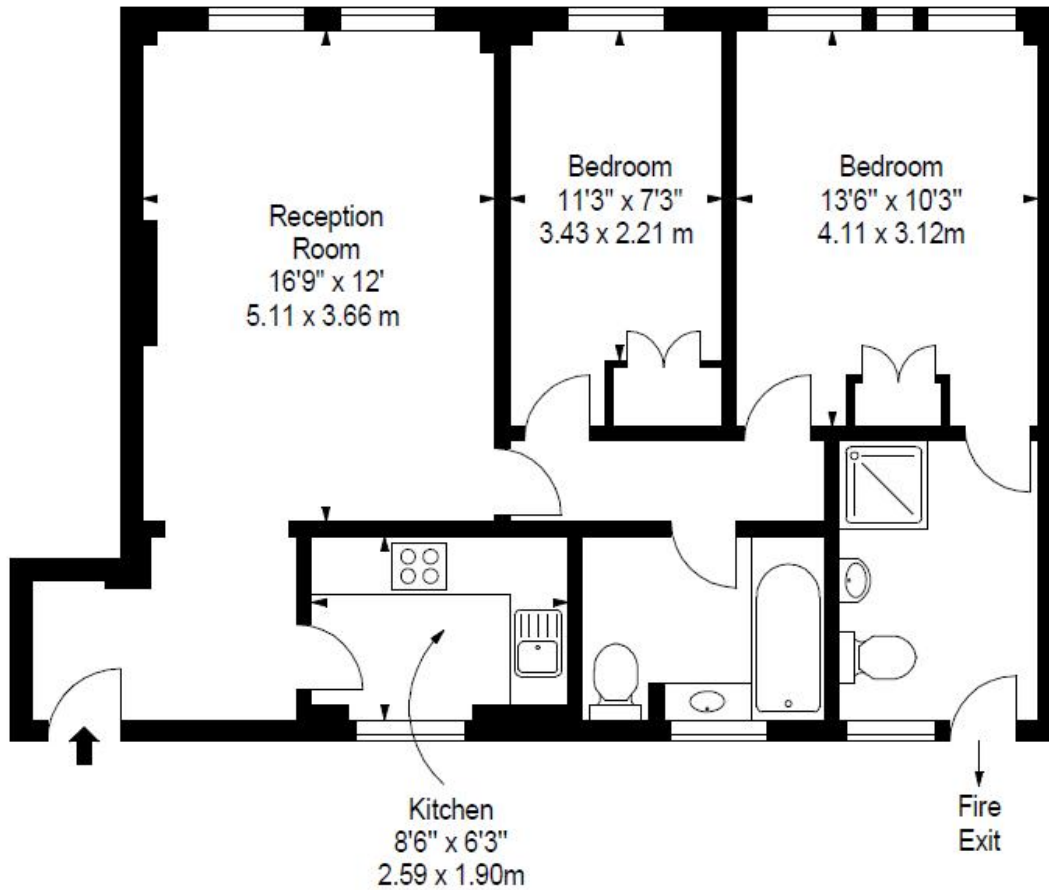
South Kensington boasts numerous shops and restaurants. The underground station is on the District, Circle and Picadilly lines making it an excellent location for access to both the City and West London.



17 PELHAM COURT, SW3

APPROX. GROSS INTERNAL AREA*
733 Ft² - 68.10 M²

ILLUSTRATION FOR IDENTIFICATION PURPOSES ONLY. NOT TO SCALE
* As Defined by RICS - Code of Measuring Practice



FIRST FLOOR

This floorplan is for illustration purposes only and is not to scale. The position and size of doors, windows, appliances and other features are approximate.

Energy Efficiency Rating		Current	Potential
Very energy efficient - lower running costs			
(92-100)	A		
(81-91)	B		
(69-80)	C		
(55-68)	D		
(39-54)	E		
(21-38)	F		
(1-20)	G		
Not energy efficient - higher running costs			
England, Scotland & Wales		74	75
EU Directive 2002/91/EC			

Environmental Impact (CO ₂) Rating		Current	Potential
Very environmentally friendly - lower CO ₂ emissions			
(92-100)	A		
(81-91)	B		
(69-80)	C		
(55-68)	D		
(39-54)	E		
(21-38)	F		
(1-20)	G		
Not environmentally friendly - higher CO ₂ emissions			
England, Scotland & Wales		54	54
EU Directive 2002/91/EC			