



NORTH STREET, WILTSHIRE, SP2
£600 PER MONTH

Winkworth



NORTH STREET, WILTSHIRE, SP2

A, superbly located, furnished double bedroom available within a two bedroom maisonette off of Fisherton Street.

A, superbly located, furnished double bedroom available within a two bedroom maisonette off of Fisherton Street.

This property would suit a single professional sharer to split costs with the existing tenant.

The property comprises of a fully fitted kitchen, sitting room, bathroom and a double bedroom.

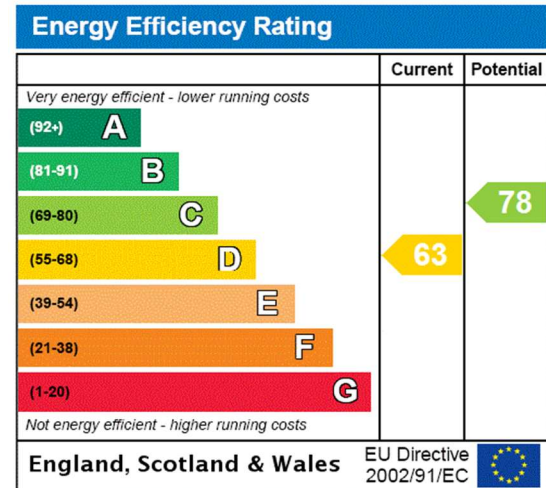
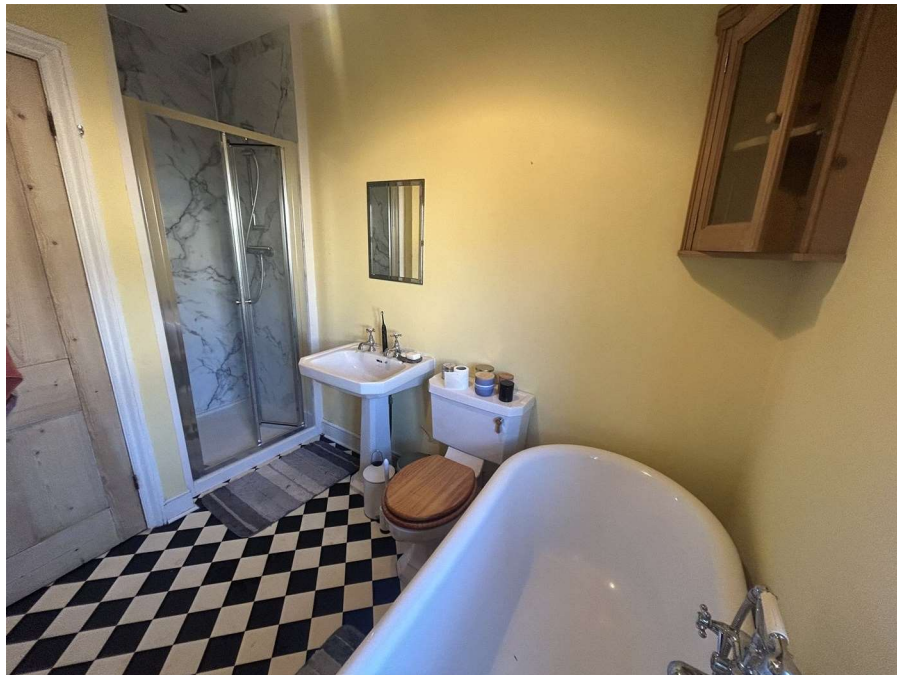
LOCATION

The property is situated in the heart of Salisbury City Centre just off of Fisherton Street.

DIRECTIONS

The property is situated in the heart of Salisbury City Centre just off of Fisherton Street.





Salisbury | 01722 443 000 | salisbury@winkworth.co.uk

winkworth.co.uk

Winkworth wishes to inform prospective buyers and tenants that these particulars are a guide and act as information only. All our details are given in good faith and believed to be correct at the time of printing but they don't form part of an offer or contract. No Winkworth employee has authority to make or give any representation or warranty in relation to this property. All fixtures and fittings, whether fitted or not are deemed removable by the vendor unless stated otherwise and room sizes are measured between internal wall surfaces, including furnishings.

Winkworth