



MARSHALL STREET, W1F
£640,000 LEASEHOLD APPROX. 133 YEARS REMAINING

DESCRIPTION:

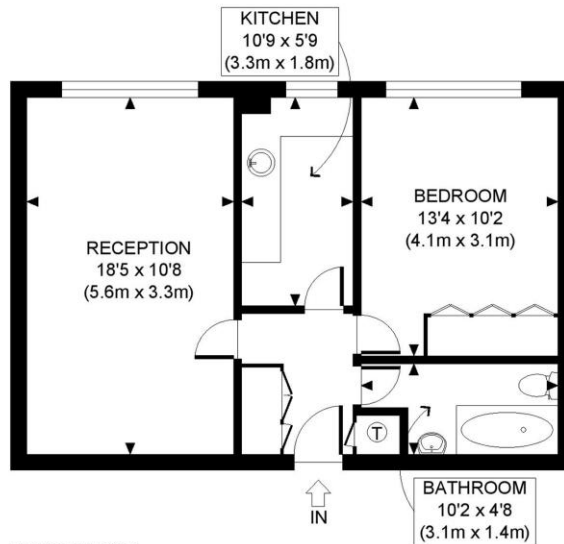
A nicely presented one bedroom apartment with an extended lease on the eighth floor of a modern development in Marshall Street in the heart of Soho.

West End | 020 7240 3322 | westend@winkworth.co.uk

Winkworth

for every step...

winkworth.co.uk



EIGHTH FLOOR
GROSS INTERNAL
FLOOR AREA 505 SQ FT



APPROX. GROSS INTERNAL FLOOR AREA: 505 SQ FT/ 47 SQM

PROPERTY PHOTO PLANS CO.UK
ONE STOP SHOP FOR PROPERTY MARKETING

This plan is for illustrative purposes only and should be used as such by any prospective client. Whilst every attempt has been made to ensure the accuracy of the Floor Plan contained here, measurements of the doors, windows, rooms and any other items are approximate and no responsibility is taken for any errors, omissions, or misstatement. The services, systems and appliances shown have not been tested and no guarantee as to the operability or efficiency can be given.

This floorplan is for illustration purposes only and is not to scale. The position and size of doors, windows, appliances, and other features are approximate.

| Energy Efficiency Rating | | Current | Potential |
|---|---|-------------------------|-----------|
| Very energy efficient - lower running costs | | | |
| (92-100) | A | | |
| (81-91) | B | | |
| (69-80) | C | 73 | 77 |
| (55-68) | D | | |
| (39-54) | E | | |
| (21-38) | F | | |
| (1-20) | G | | |
| Not energy efficient - higher running costs | | | |
| England, Scotland & Wales | | EU Directive 2002/91/EC | |

Tenure: Leasehold
Term: Expires - 02/01/2158
Service Charge: £,4000 Per Annum plus £1,600 reserve
Ground Rent: NIL
Council Tax Band: Westminster D
 Where no figures are shown, we have been unable to ascertain the information. All figures that are shown were correct at the time of printing.

West End | 020 7240 3322 | westend@winkworth.co.uk



for every step...

winkworth.co.uk

Winkworth wishes to inform prospective buyers and tenants that these particulars are a guide and act as information only. All our details are given in good faith and believed to be correct at the time of printing but they don't form part of an offer or contract. No Winkworth employee has authority to make or give any representation or warranty in relation to this property. All fixtures and fittings, whether fitted or not are deemed removable by the vendor unless stated otherwise and room sizes are measured between internal wall surfaces, including furnishings.