



OKEHAMPTON ROAD, LONDON, NW10
£765,000 SHARE OF FREEHOLD

**Beautifully presented three bedroom first floor flat,
close to amenities of both Queens Park and Kensal
Rise.**

Kensal & Queens Park | 0208 960 4947 | kensalrise@winkworth.co.uk





LOCATION:

Okehampton Road is a fantastic location just to the North West of Queens Park itself. Homeowners here have great transport links at Kensal Rise Overground or through Queens Park to the station which has Bakerloo and Overground services. Chamberlayne Road or Salusbury Road have a great array of amenities including lots of cafe's, bars, local shops and gastro Pubs. Other local highlights include the Lexi Cinema and Tiverton Park at the end of the street.



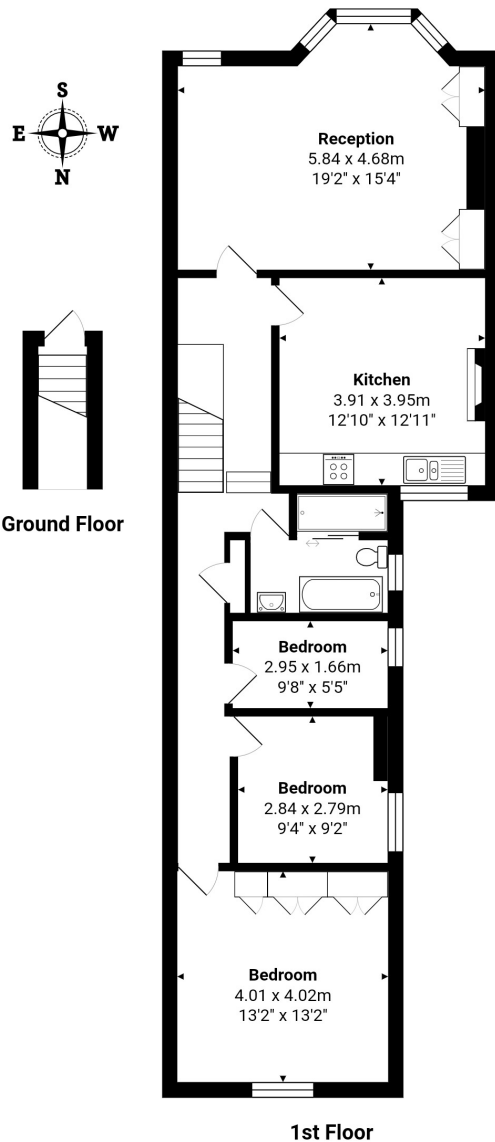
Winkworth



DESCRIPTION:

This lovely first floor flat measures over 1010 sqft. which has two double bedrooms and further single bedroom, contemporary family bathroom, beautifully detailed emerald green kitchen with period feature fire place, and finally a large bright and airy reception room to the front with three part bay window and built in storage. There is also scope for further development (STPP) to create a double loft room. Overall, property is in excellent condition throughout with viewing coming highly recommended.

Winkworth



Total Area: 93.8 m² ... 1010 ft²
All measurements are approximate and for display purposes only

This floorplan is for illustration purposes only and is not to scale. The position and size of doors, windows, appliances and other features are approximate.

Kensal & Queens Park | 0208 960 4947 | kensalrise@winkworth.co.uk

Winkworth

winkworth.co.uk

See things differently

winkworth wishes to inform prospective buyers and tenants that these particulars are a guide and act as information only. All our details are given in good faith and believed to be correct at the time of printing but they don't form part of an offer or contract. No Winkworth employee has authority to make or give any representation or warranty in relation to this property. All fixtures and fittings, whether fitted or not are deemed removable by the vendor unless stated otherwise and room sizes are measured between internal wall surfaces, including furnishings.