



BOURNEMOUTH ROAD, PECKHAM RYE, LONDON, SE15
£360,000 LEASEHOLD

A WELL PRESENTED, MODERN FLAT SITUATED IN A POPULAR LOCATION IN SE15.

DESCRIPTION:

Situated just off Rye Lane in the heart of Peckham, we are proud to offer to market this modern one double bedroom flat. The property offers a open-plan kitchen reception, boasting built in appliances, wood effect flooring, and plenty of natural light. The reception leads on to a private south facing balcony. The property further boasts a double bedroom and separate bathroom. The location offers easy access to the shops, bars and amenities on Rye Lane and Bellenden Road. Transport links are provided via Peckham Rye station for the overground.

Dulwich | 020 8299 2722 | dulwich@winkworth.co.uk

Tenure Leasehold approx. 114 yrs remaining | Council Tax Band C – London Borough of Southwark | Service Charge £236 pa | Ground Rent £100 pa

AT A GLANCE

- One Double Bedroom
- Open Plan Kitchen/Reception
- South Facing Balcony
- Separate Bathroom
- Great Location

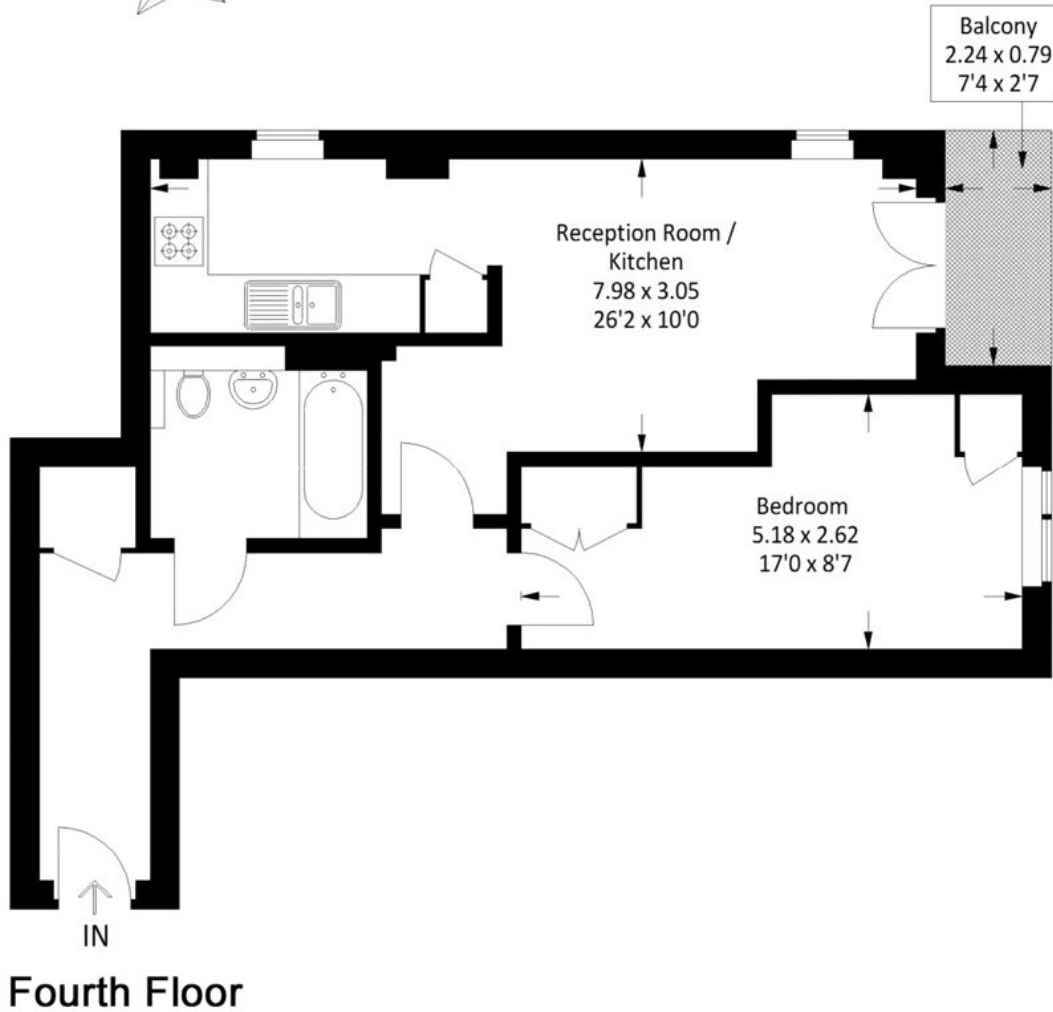
Winkworth





Bournemouth Road, SE15

Approximate Gross Internal Area
48.9 sq m / 526 sq ft



This floorplan is for illustration purposes only and is not to scale. The position and size of doors, windows, appliances and other features are approximate.

Energy Efficiency Rating		Current	Potential
Very energy efficient - lower running costs			
(92-)	A		
(81-91)	B	81	81
(69-80)	C		
(55-68)	D		
(39-54)	E		
(21-38)	F		
(1-20)	G		
Not energy efficient - higher running costs			
England, Scotland & Wales		EU Directive 2002/91/EC	

Dulwich | 020 8299 2722 | dulwich@winkworth.co.uk



winkworth.co.uk

See things differently

Winkworth wishes to inform prospective buyers and tenants that these particulars are a guide and act as information only. All our details are given in good faith and believed to be correct at the time of printing but they don't form part of an offer or contract. No Winkworth employee has authority to make or give any representation or warranty in relation to this property. All fixtures and fittings, whether fitted or not are deemed removable by the vendor unless stated otherwise and room sizes are measured between internal wall surfaces, including furnishings.