



GREENWICH SOUTH STREET, GREENWICH, LONDON, SE10
£800,000 SHARE OF FREEHOLD

A FABULOUS TWO BEDROOM SPLIT LEVEL CONVERSION FLAT, THAT IS PART OF THIS BEAUTIFUL GRADE II LISTED HOUSE LOCATED IN THE HEART OF WEST GREENWICH. MEASURING AN IMPRESSIVE 1347 SQ FT AND FEATURING A PRIVATE ROOF TERRACE!

Greenwich | 02030533033 | greenwich@winkworth.co.uk

Winkworth

for every step...

winkworth.co.uk



DESCRIPTION:

A fabulous two-bedroom split level conversion flat, that is part of this beautiful Grade II listed house located in the heart of West Greenwich. Measuring an impressive 1347 sq ft and featuring a private roof terrace!

Presented in particularly good order throughout and lovingly cared for by the current owners, the accommodation comprises of two huge interlinking reception rooms on the first floor, which maintain the original hard wood flooring. This level also has a good-sized landing with ample storage and utility cupboard, along with a well-presented kitchen. The aforementioned roof terrace is off the landing and to the rear of the house. Upstairs there are two large double bedrooms and two beautiful family bathrooms, including an ensuite! Share of Freehold! This really is one of the nicest flats we've seen for quite some time, so your earliest viewing is recommended.

Greenwich South Street is a popular and perfectly located road in West Greenwich and is just a short walk away from the town centre which offers a wide variety of amenities including mainline rail, DLR and riverboat service. Along with a great selection of shops and restaurants, the Royal Park is also close by.

AT A GLANCE

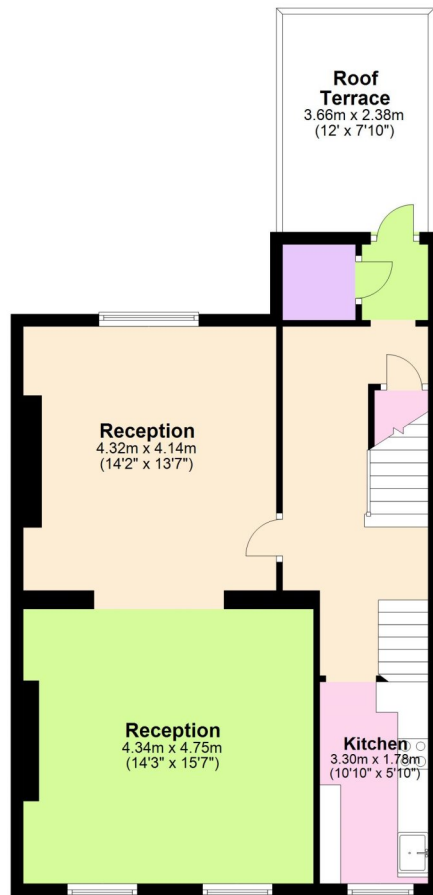
- outstanding apartment
- 2 bedroom split level
- first and second floors
- Grade II listed
- share of freehold
- circa 1347 sq ft
- two large receptions
- two bathrooms
- private roof terrace
- West Greenwich location
- close to amenities



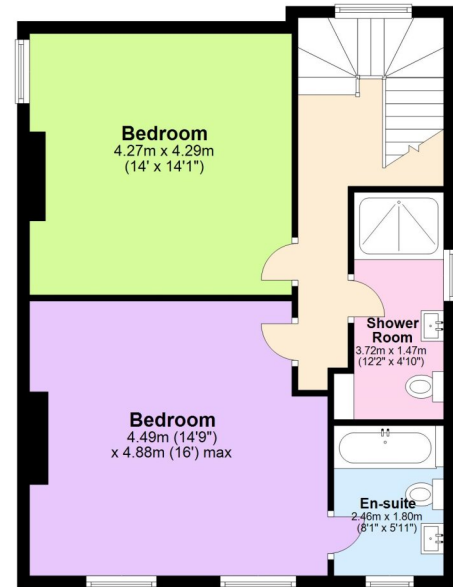


First Floor
Approx. 61.4 sq. metres (661.3 sq. feet)

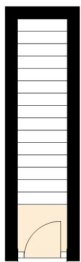
Roof Terrace
3.66m x 2.38m
(12' x 7'10")



Second Floor
Approx. 60.7 sq. metres (653.1 sq. feet)



Ground Floor
Approx. 3.1 sq. metres (33.0 sq. feet)



Total area: approx. 125.2 sq. metres (1347.5 sq. feet)

This floorplan is for illustration purposes only and is not to scale. The position and size of doors, windows, appliances and other features are approximate.

Tenure: Share of Freehold

Term: tbc

Service Charge: 50 % share of outgoings

Ground Rent: N/A

Council Tax Band: tbc

Where no figures are shown, we have been unable to ascertain the information. All figures that are shown were correct at the time of printing.

Greenwich | 02030533033 | greenwich@winkworth.co.uk

Winkworth

for every step...

winkworth.co.uk

Winkworth wishes to inform prospective buyers and tenants that these particulars are a guide and act as information only. All our details are given in good faith and believed to be correct at the time of printing but they don't form part of an offer or contract. No Winkworth employee has authority to make or give any representation or warranty in relation to this property. All fixtures and fittings, whether fitted or not are deemed removable by the vendor unless stated otherwise and room sizes are measured between internal wall surfaces, including furnishings.