



ALFRED CLOSE, W4  
**£1,850 PER MONTH FURNISHED**

## ONE BEDROOM APARTMENT MOMENTS FROM CHISWICK HIGH ROAD

Chiswick | 020 8994 7096 | [chiswick@winkworth.co.uk](mailto:chiswick@winkworth.co.uk)

**Winkworth**

for every step...

[winkworth.co.uk](http://winkworth.co.uk)





## DESCRIPTION:

Winkworth Chiswick are delighted to offer this bright, larger than average one bedroom apartment situated moments from Chiswick High Road.

Located on the second floor of a purpose-built development, this great apartment comprises of a spacious reception room, separate kitchen, large bedroom, and ample storage.

The property is ideally located for Chiswick Park underground station (district line) and Chiswick High Road. The property is available on a furnished or part furnished basis and has the added benefit of a private off street parking space.

Early view is an absolute must to avoid disappointment.

Council Tax Band: D/ Hounslow Borough

EPC: C

1 weeks holding deposit: £426.92

5 weeks security deposit: £2,134.61

## ACCOMMODATION

1 Bedroom

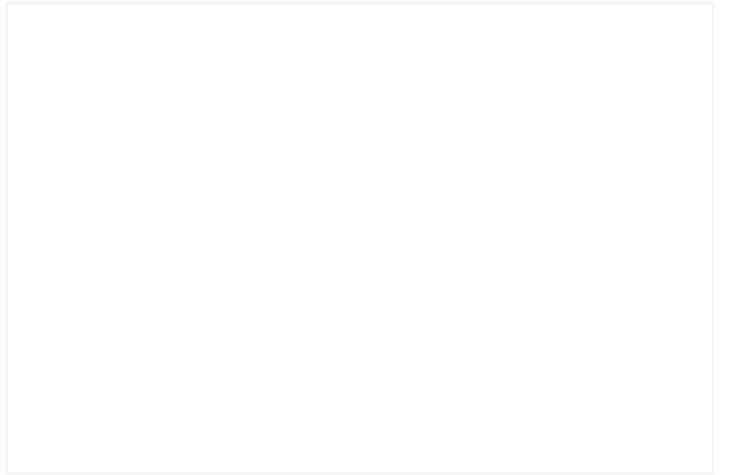
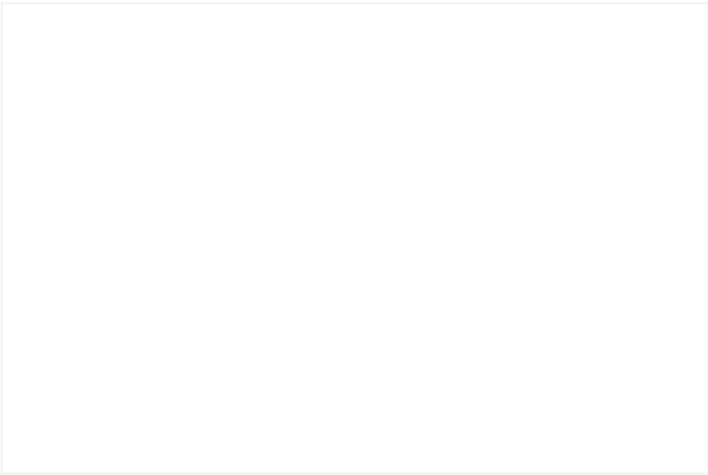
1 Reception Room

1 Bathroom

Upper Floor without Lift,

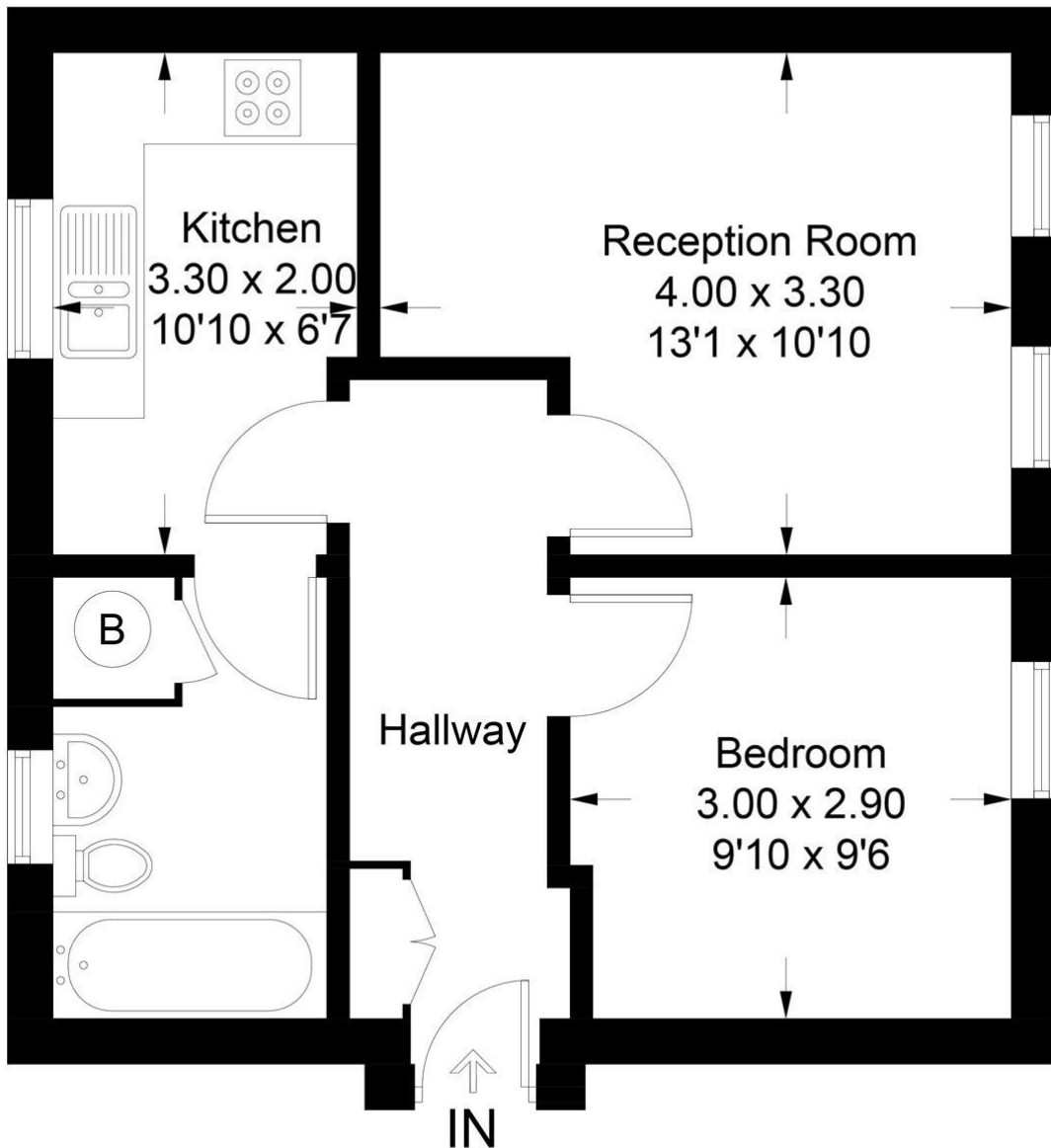
Off Street Parking,

Furnished



# Alfred Close, W4

Approximate Gross Internal Area = 40.4 sq m / 435 sq ft



## Second Floor

Illustration for identification purposes only, measurements are approximate, not to scale. floorplansUsketch.com © (ID431969)

This floorplan is for illustration purposes only and is not to scale. The position and size of doors, windows, appliances and other features are approximate.

**Deposit:** £2,134.62

**Holding Deposit:**

**Council Tax Band:** C

Where no figures are shown, we have been unable to ascertain the information. All figures that are shown were correct at the time of printing.

Energy Efficiency Rating		Current	Potential
Very energy efficient - lower running costs			
(92-100)	A		
(81-91)	B		
(69-80)	C	69	73
(55-68)	D		
(39-54)	E		
(21-38)	F		
(1-20)	G		
Not energy efficient - higher running costs			
England, Scotland & Wales		EU Directive 2002/91/EC	

Chiswick | 020 8994 7096 | chiswick@winkworth.co.uk

# Winkworth

for every step...

winkworth.co.uk

Winkworth wishes to inform prospective buyers and tenants that these particulars are a guide and act as information only. All our details are given in good faith and believed to be correct at the time of printing but they don't form part of an offer or contract. No Winkworth employee has authority to make or give any representation or warranty in relation to this property. All fixtures and fittings, whether fitted or not are deemed removable by the vendor unless stated otherwise and room sizes are measured between internal wall surfaces, including furnishings.