



RIDLEY ROAD, LONDON, NW10
£700,000 SHARE OF FREEHOLD

A TRULY STUNNING THREE DOUBLE BEDROOM, TWO BATHROOM, SPLIT LEVEL FLAT SPREAD OVER 1,250 SQFT AND LOCATED WELL FOR TRANSPORT LINKS AND AMENITIES.

Kensal & Queens Park | 0208 960 4947 | kensalrise@winkworth.co.uk

Winkworth

winkworth.co.uk

See things differently



LOCATION:

Ridley Road is a highly popular location. From here, buyers here will have easy access to the amenities on College Road including an array of independent shops, gastropubs and coffee shops. Willesden Junction and Kensal Green Stations (Bakerloo & Overground) are within short walking distance. For recreation, there are three local parks accessible - Roundwood, King Edwards and Queens Park, which are all regularly used by residents in the area.



Winkworth



DESCRIPTION:

Finished to a high standard throughout, this flat is a cut above the rest. The flat has been re-designed to create a bright and spacious 'L' shape open plan area to the front of the building, with sash bay window and exposed brick chimney, wood burner and built in alcove storage. The kitchen is handleless, with fully integrated appliances and space for a breakfast table.

To the rear of the flat, there are two generous double bedrooms, both with fitted wardrobes, and a tiled three piece bathroom suite.

Upstairs the loft conversion is now the principle room with an en-suite shower room and views across central London.

There is ample eaves storage as well as built in wardrobes.

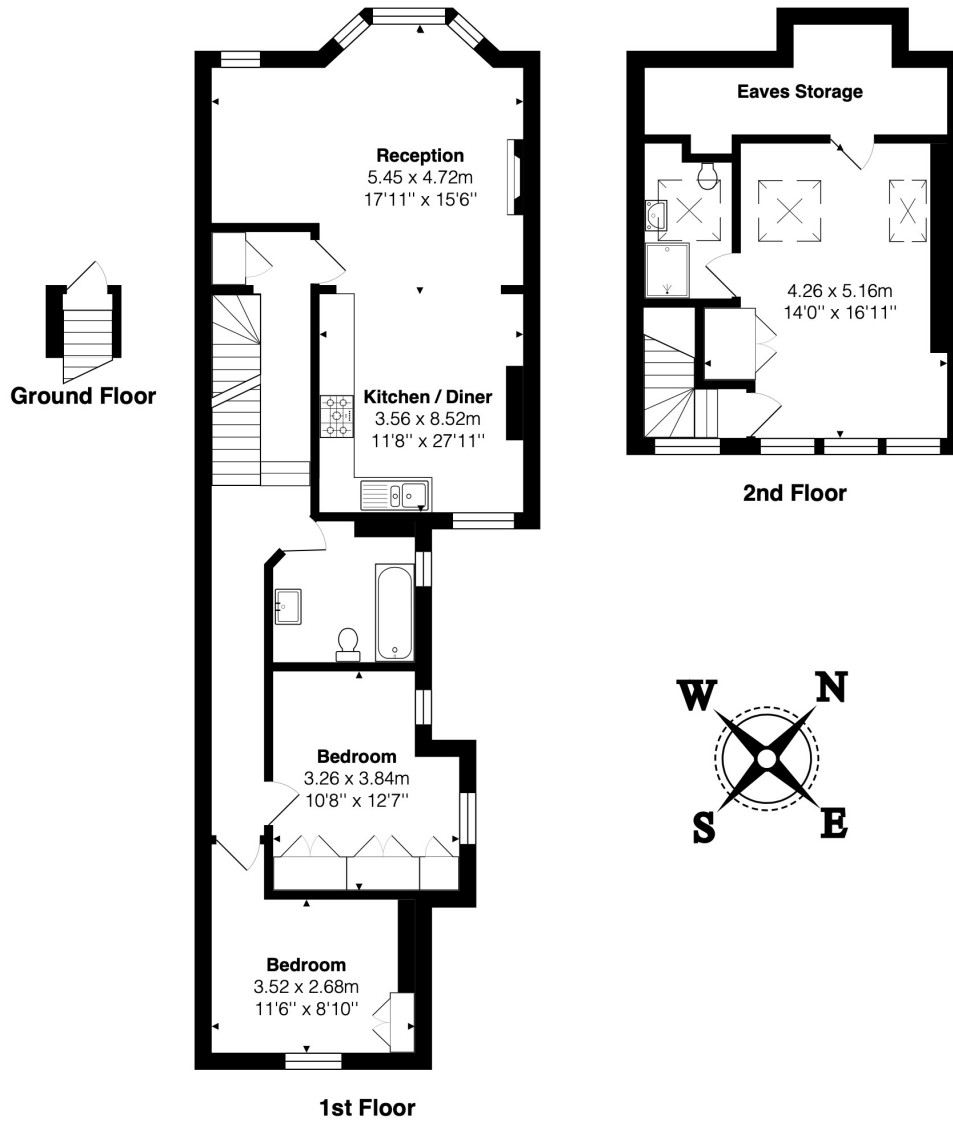
Overall, the property is excellent and is not one to be missed, therefore early viewing comes highly recommended.

TENURE: Share of Freehold.

winkworth.co.uk

Winkworth

See things differently



Total Area: 116.2 m² ... 1250 ft²

All measurements are approximate and for display purposes only

This floorplan is for illustration purposes only and is not to scale. The position and size of doors, windows, appliances and other features are approximate.

Kensal & Queens Park | 0208 960 4947 | kensalrise@winkworth.co.uk

Winkworth

winkworth.co.uk

See things differently

winkworth wishes to inform prospective buyers and tenants that these particulars are a guide and act as information only. All our details are given in good faith and believed to be correct at the time of printing but they don't form part of an offer or contract. No Winkworth employee has authority to make or give any representation or warranty in relation to this property. All fixtures and fittings, whether fitted or not are deemed removable by the vendor unless stated otherwise and room sizes are measured between internal wall surfaces, including furnishings.