



DORCHESTER ROAD, WEYBRIDGE, SURREY, KT13
£2,500 PER MONTH UNFURNISHED

4 BEDROOM 3 BATHROOM TOWN CENTER
PERIOD HOUSE AND GARDEN.

Weybridge | 01932 854400 | weybridge@winkworth.co.uk

Tenant Fees Apply: Details of fees for tenant referencing, tenancy agreement admin fees and renewal fees are available on the Winkworth website and the link can be found with the displayed rent for the property. Tenants should ensure they are fully conversant with these upfront fees and other costs that are involved at the outset of the tenancy before making an offer to rent and your local Winkworth office will provide written details upon request.

winkworth.co.uk

Winkworth

for every step...



DESCRIPTION:

An attractive semi-detached four bedroom family home which is arranged over three floors in a popular town centre location. The property is well located within the catchment area for some good local schools and has an extended kitchen/dining room which leads out onto a lovely lawned rear garden.

EPC D

available for up to 6 months



Winkworth

for every step...

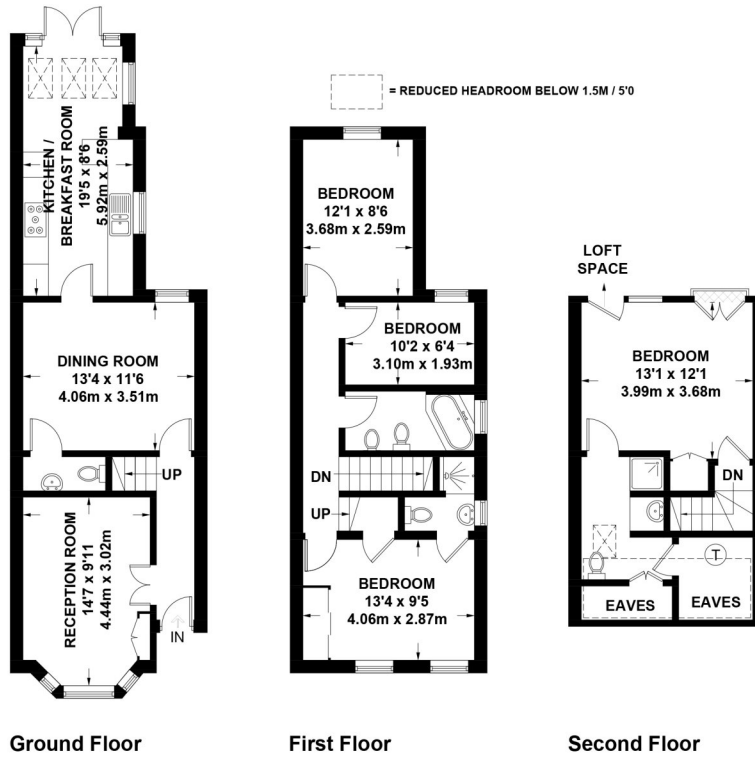


Winkworth

for every step...

Dorchester Road, Weybridge

Approximate Gross Internal Area = 124.4 sq m / 1339 sq ft
(Including Eaves)



Exposure House © 2018 (ID461662)
www.exposurehouse.co.uk

Whilst every attempt has been made to ensure the accuracy of this floor plan, measurements of doors, windows and rooms are approximate and no responsibility is taken for any error or omission. This illustration is for identification purposes only. Measured and drawn in accordance with RICS guidelines. Not drawn to scale, unless stated. Dimensions shown are to the nearest 3" and are to the points indicated by the arrow heads.

This floorplan is for illustration purposes only and is not to scale. The position and size of doors, windows, appliances and other features are approximate.

Deposit: £0.00

Holding Deposit:

Council Tax Band:

Where no figures are shown, we have been unable to ascertain the information. All figures that are shown were correct at the time of printing.

Weybridge | 01932 854400 | weybridge@winkworth.co.uk

Winkworth

for every step...

winkworth.co.uk

Winkworth wishes to inform prospective buyers and tenants that these particulars are a guide and act as information only. All our details are given in good faith and believed to be correct at the time of printing but they don't form part of an offer or contract. No Winkworth employee has authority to make or give any representation or warranty in relation to this property. All fixtures and fittings, whether fitted or not are deemed removable by the vendor unless stated otherwise and room sizes are measured between internal wall surfaces, including furnishings.