

CARBURTON STREET, FITZROVIA, W1W
£835,000 LEASEHOLD

SITUATED IN W1W - A RARELY AVAILABLE, WELL PRESENTED, SPACIOUS TWO DOUBLE BEDROOM DUPLEX APARTMENT, WITH OWN ENTRANCE, 27' RECEPTION ROOM, LARGE STORAGE CUPBOARDS AND AN ATTRACTIVE PRIVATE GARDEN.

West End | 020 7240 3322 | westend@winkworth.co.uk

Winkworth

for every step...

winkworth.co.uk



DESCRIPTION:

Located on a quiet, tree lined, one-way street in the heart of Fitzrovia, this wonderful apartment is ready for immediate occupation and with no upward chain. Carburton Street is extremely and extensively well served for local, national, and international transport hubs. The closest underground stations are Great Portland St', Regents Park and Warren St'.

LEASEHOLD: ABOUT 90 YEARS REMAINING | SERVICE CHARGE: ABOUT £2,200 p.a. | GROUND RENT: ABOUT £10 p.a. | COUNCIL TAX BAND: E



Winkworth

for every step...



Winkworth

for every step...

Carburton Street

Approximate Gross Internal Area = 82.3 sq m / 886 sq ft
 Storage = 3.8 sq m / 40 sq ft
 Total = 86.1 sq m / 926 sq ft

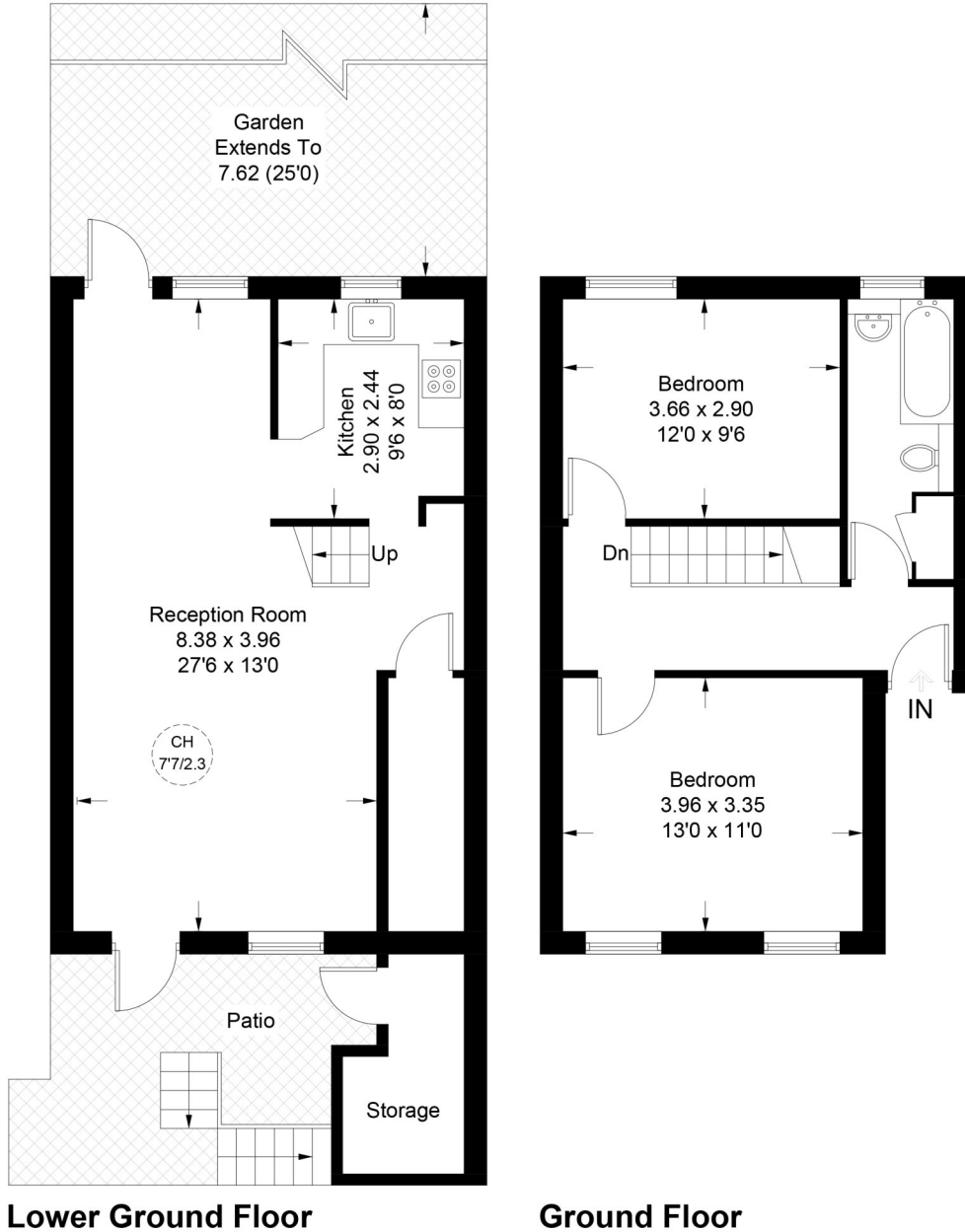


Illustration for identification purposes only, measurements are approximate, not to scale. floorplansUsketch.com © (ID946017)

This floorplan is for illustration purposes only and is not to scale. The position and size of doors, windows, appliances and other features are approximate.

Energy Efficiency Rating	
	Potential
Very energy efficient - lower running costs	
(92+) A	
(81-91) B	
(69-80) C	75
(55-68) D	79
(39-54) E	
(21-38) F	
(1-20) G	
Not energy efficient - higher running costs	
England, Scotland & Wales	EU Directive 2002/91/EC

West End | 020 7240 3322 | westend@winkworth.co.uk



for every step...

winkworth.co.uk

Winkworth wishes to inform prospective buyers and tenants that these particulars are a guide and act as information only. All our details are given in good faith and believed to be correct at the time of printing but they don't form part of an offer or contract. No Winkworth employee has authority to make or give any representation or warranty in relation to this property. All fixtures and fittings, whether fitted or not are deemed removable by the vendor unless stated otherwise and room sizes are measured between internal wall surfaces, including furnishings.