



## HILARY CLOSE, LONDON, SW6 £8,500 PER MONTH

A simply exquisite five bedroom family house spanning over 2400 square feet and set within an enchanting private gated development on the Fulham/Chelsea border.

Fulham & Parsons Green | 020 7731 3388 | [fulham@winkworth.co.uk](mailto:fulham@winkworth.co.uk)

Tenant Fees Apply: Details of fees for tenant referencing, tenancy agreement admin fees and renewal fees are available on the Winkworth website and the link can be found with the displayed rent for the property. Tenants should ensure they are fully conversant with these upfront fees and other costs that are involved at the outset of the tenancy before making an offer to rent and your local Winkworth office will provide written details upon request.

[winkworth.co.uk](http://winkworth.co.uk)

**Winkworth**

for every step...





This immaculate and beautifully presented five bedroom house is situated in a quiet and secure enclave of seven houses which is approached via electric gates.

You enter into an entrance hall with access to a downstairs cloakroom. The stunning open plan kitchen/reception room (with access to a separate utility room) is located to the rear of the property and offers ample space for both relaxing and dining. Doors lead out to an impressive 56 foot garden which benefits from a useful outdoor storage room. There is also a further reception room on this floor which could be used as an additional sitting room, a study or a playroom.

Stairs lead up to the first floor which consists of the expansive master bedroom with two walk-in wardrobes and a luxurious ensuite bathroom. There are two further bedrooms on this floor which are served by a family bathroom. On the second floor, there is a fourth and fifth bedroom, which are served by a modern shower-room.

Hilary Close, where residents benefit from off-street parking, is ideally located just a short walk from the District Line at Fulham Broadway underground station and is within walking distance of South Kensington and Chelsea. There is an array of shops and restaurants to enjoy in Parsons Green and Chelsea along with wonderful schools and nurseries.

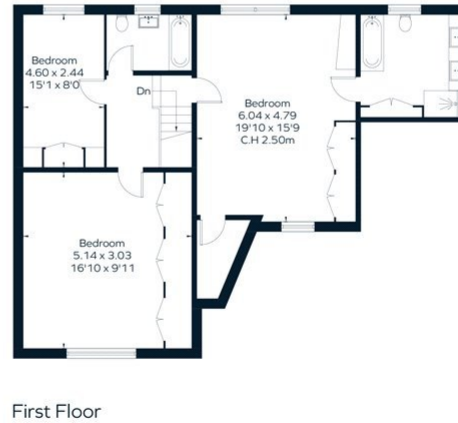
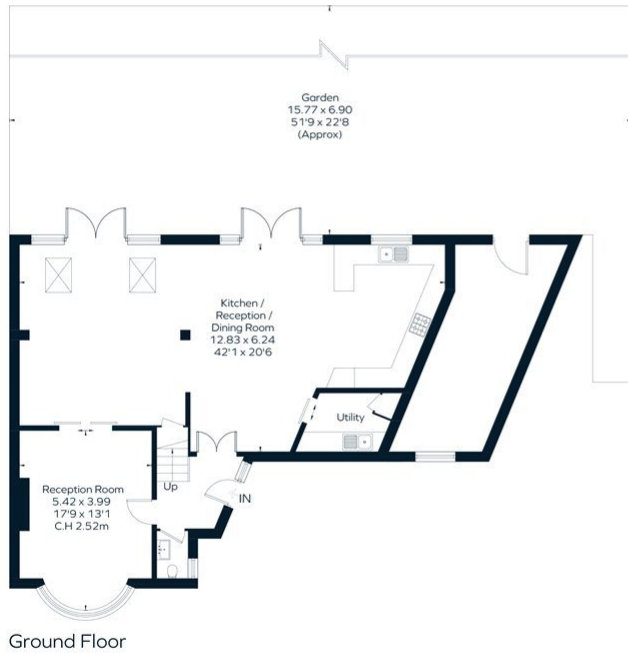








Approximate Floor Area = 230.6 sq m / 2482 sq ft



This floor plan has been drawn in accordance with RICS Property Measurement 2nd edition.  
All measurements, including the floor area, are approximate and for illustrative purposes only. @fourwalls-group.com #72091

This floorplan is for illustration purposes only and is not to scale. The position and size of doors, windows, appliances and other features are approximate.

Fulham & Parsons Green | 020 7731 3388 | fulham@winkworth.co.uk



for every step...

winkworth.co.uk

Winkworth wishes to inform prospective buyers and tenants that these particulars are a guide and act as information only. All our details are given in good faith and believed to be correct at the time of printing but they don't form part of an offer or contract. No Winkworth employee has authority to make or give any representation or warranty in relation to this property. All fixtures and fittings, whether fitted or not are deemed removable by the vendor unless stated otherwise and room sizes are measured between internal wall surfaces, including furnishings.