



ST JOHN'S WOOD, LONDON, £2,750pw / £11,917pm UNFURNISHED

A contemporary four bedroom town house set within this sought after gated development, and benefiting from two underground car parking spaces, a day porter and a split level deck & patio. The property is located on the favoured East side of St John's Wood, just off Acacia Road.

Master Bedroom Suite | Three Further Bedrooms | Two Further Bathrooms (One En-Suite) | Guest WC | Reception Room | Dining Room | Fitted Kitchen | Utility Room | Patio Garden | Underground Parking for 2 Cars

winkworth.co.uk/st-johns-wood

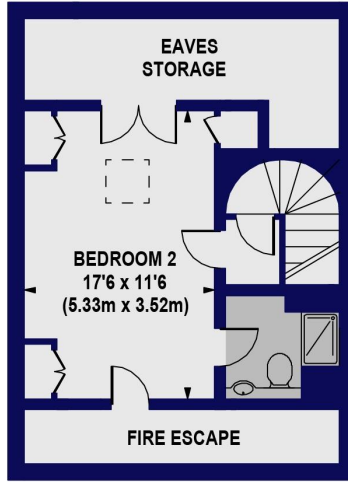
Winkworth

For every step...

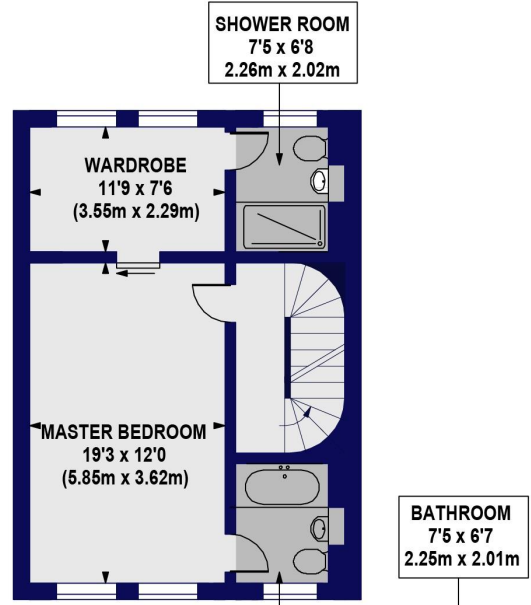


TATHAM PLACE

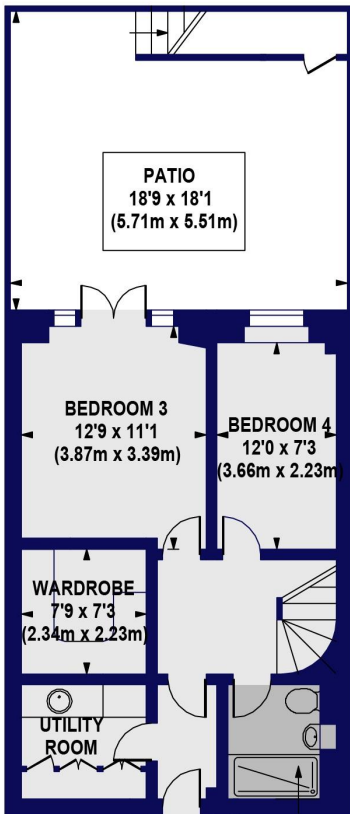
Approx Gross Internal Floor Area 2427 sq ft. / 225.47 sq.m



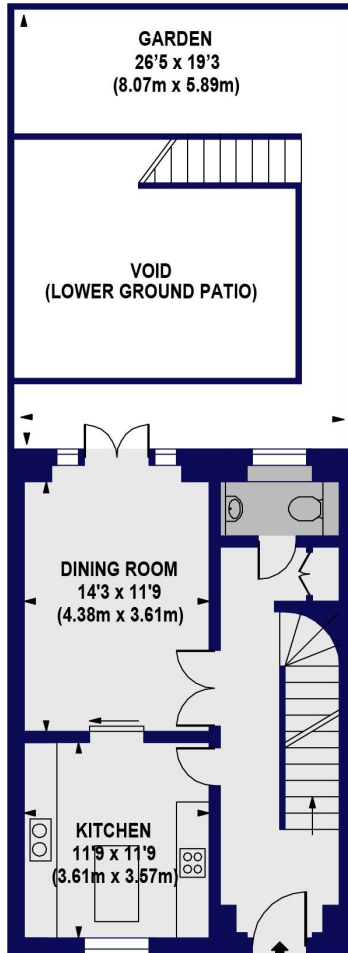
THIRD FLOOR
GROSS INTERNAL
FLOOR AREA 305 SQ FT



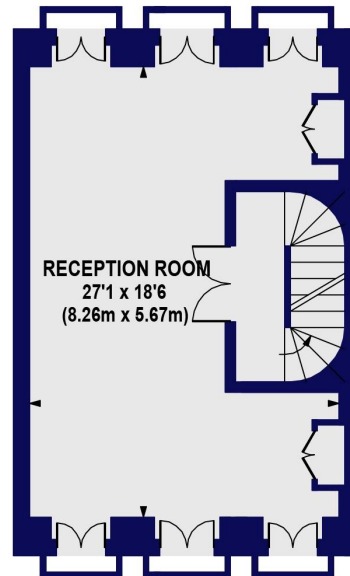
SECOND FLOOR
GROSS INTERNAL
FLOOR AREA 520 SQ FT



LOWER GROUND FLOOR
GROSS INTERNAL
FLOOR AREA 521 SQ FT



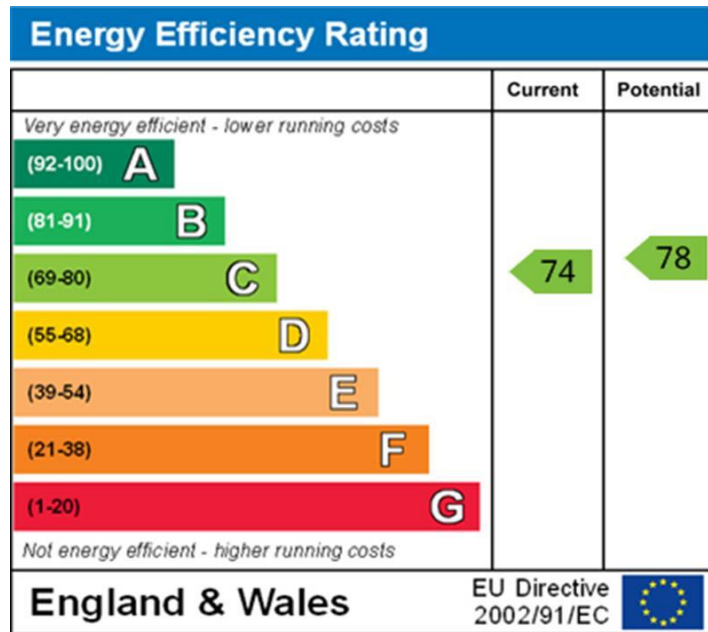
GROUND FLOOR
GROSS INTERNAL
FLOOR AREA 521 SQ FT



FIRST FLOOR
GROSS INTERNAL
FLOOR AREA 560 SQ FT

All measurements of walls, doors, windows, fittings and appliances, including their size and location, are shown as standard sizes and do not constitute any warranty or representation by the seller, their agent or CP Creative. Any intending purchaser must satisfy himself by inspection or otherwise as to the correctness of the information contained in these plans





NB: These particulars are not an offer or contract, nor part of one. You should not rely on statements by Winkworth in the particulars or by word of mouth or in writing "information" as being factually accurate about the property, its condition or its value. Neither Winkworth nor any joint agent has any authority to make any representations about the property, and accordingly any information given is entirely without responsibility on the part of the agents, seller(s) or lessor(s). These particulars are prepared on the basis of the information supplied by our client and are a rough guide for information only. The photographs show only certain parts of the property. We are not able to check all of the information and therefore are unable to guarantee accuracy. All interested parties are therefore advised to undertake all necessary inspections and checks that they deem appropriate. Where displayed, the square footage is taken from the floor plans, which are created by an independent supplier. These measurements are approximate and included for illustrative purposes only. The measurements may vary. Winkworth does not make any representation as to the accuracy of these measurements and you should seek to verify them for yourself. Winkworth accept no liability for any loss you may suffer if you rely on these measurements. All fixtures and fittings, whether fitted or not are deemed removable by the vendor unless stated. Any reference to alterations to, or use of, any part of the property does not mean that any necessary planning, building regulations or other consent has been obtained. Amenities and appliances have not been tested.

St John's Wood | 103-104 St John's Wood Terrace, London NW8 6PL
020 7586 7001 | stjohnswood@winkworth.co.uk

