



HAMPSTEAD GARDENS, NW11
£1,350,000 FREEHOLD

A CHARMING MUCH LOVED 5 BEDROOM EXTENDED FAMILY HOME WITH A MOST ATTRACTIVE REAR GARDEN

5 Bedrooms/ 2 Bathrooms/ Kitchen Diner/ 2 Reception Rooms/
Huge Master Bedroom/ Character Features/ South Facing
Attractive Rear Garden/ EPC Rating: D/ Council Tax Band: F



DESCRIPTION:

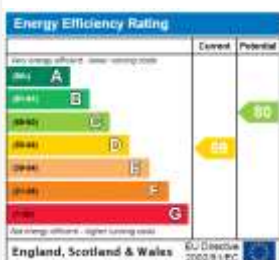
We are delighted to offer this spacious (in excess of 2100 sq ft) 5 bedroom, 2 reception room, 2 bathroom family home. The property is located in a quiet no through road, off the Finchley Road equidistant to both Golders Green and Temple Fortune. The house is located approximately ¼ mile from Golders Green Station (Northern Line) and within easy distance of local shops, amenity spaces (Golders Hill Park and the Hampstead Heath Extension) and local places of worship.

The house has been extremely well maintained by the present owners, who also converted the loft to incorporate a very large master bedroom suite with en-suite bathroom plus a separate study area. There are 4 further bedroom and family bathroom on the 1st floor. On the ground floor, there are 2 spacious reception rooms, an attractive entrance hallway plus a guest WC and a well appointed kitchen/dining area with traditional casement doors onto the garden.

The rear, South facing garden, can be accessed both via the kitchen and the rear reception room. The house also has the benefit of a side passageway which is particularly beneficial as many of the homes in this street are mid-terraced. The garden itself is easy to maintain and also extremely well stocked with mature borders of perennial shrubs and plants.

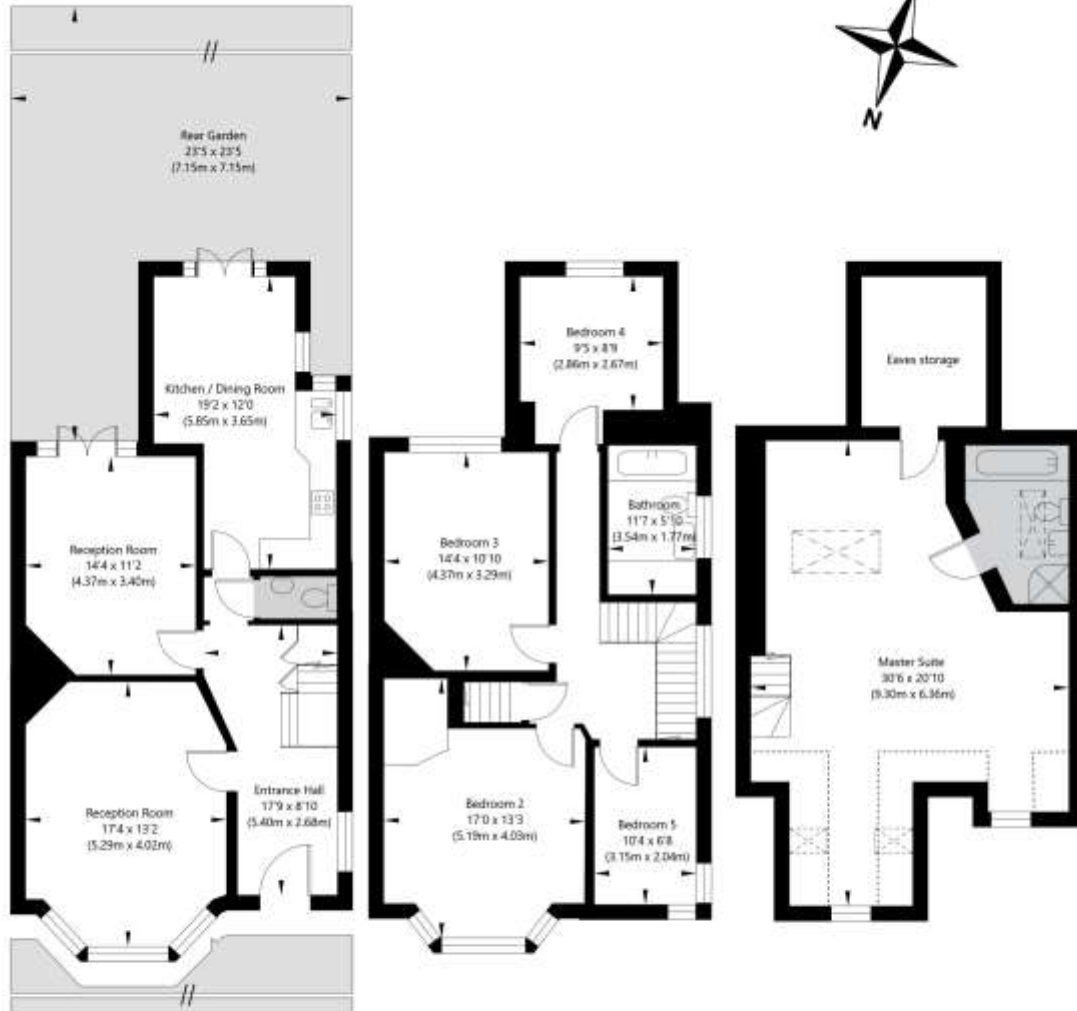
This is an exceptionally well maintained family home, with easy access to all local facilities and it is attractively priced.

Viewing is highly recommended.





Hampstead Gardens, London, NW11 7EF



Ground Floor
GROSS INTERNAL FLOOR AREA
APPROX. 68.53 SQ M / 738 SQ FT

First Floor
GROSS INTERNAL FLOOR AREA
APPROX. 68.39 SQ M / 736 SQ FT

Top Floor
GROSS INTERNAL FLOOR AREA
APPROX. 58.52 SQ M / 630 SQ FT

APPROXIMATE GROSS INTERNAL FLOOR AREA 195.44 SQ M / 2104 SQ FT
THIS FLOOR PLAN IS FOR ILLUSTRATIVE PURPOSES ONLY AND
SHOULD BE USED FOR THIS PURPOSE BY PROSPECTIVE APPLICANTS AS ITS NOT TO SCALE.