



## PETERBOROUGH VILLAS, SW6

**£750,000 TO BE ADVISED**

A charming and well-located two bedroom, two bathroom flat located just moments from Eel Brook Common in Fulham.

Fulham & Parsons Green | 020 7731 3388 | [fulham@winkworth.co.uk](mailto:fulham@winkworth.co.uk)

**Winkworth**

for every step...

[winkworth.co.uk](http://winkworth.co.uk)



## DESCRIPTION

The flat, located on the second floor in Peterborough Villas, is thoughtfully laid out and spans just over 800 Sq. Ft. The reception room is flooded with natural light and has doors leading out to a balcony offering beautiful views over Fulham. The bright eat in kitchen has a good balance of wall and base units and offers access to a flat roof. There are two excellent sized double bedrooms which both benefit from built in wardrobes, and one is served by an ensuite bathroom. There is a second bathroom with a separate shower and bath.

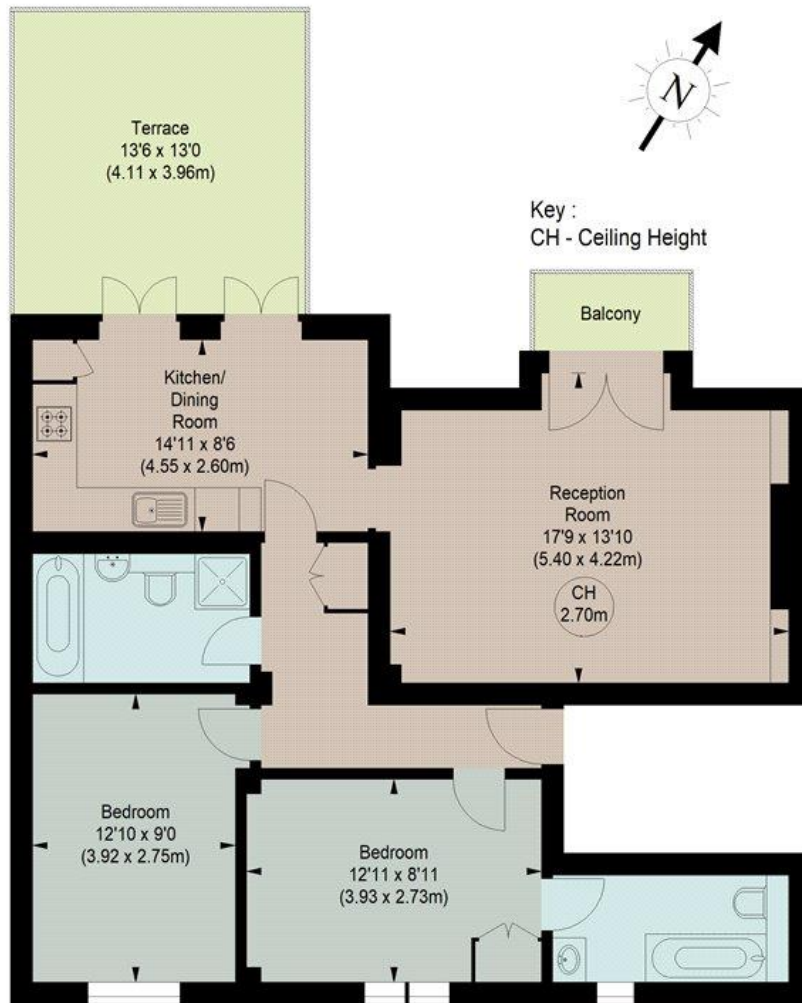
Peterborough Villas is a well kept mansion block situated at the most northern point of Bagleys Lane and is a short walk from both Fulham Broadway and Parsons Green tube station. The green expanse of Eel Brook Common is within immediate access as well as being close to an extensive array of shops and restaurants on the New Kings Road. The 22 bus route connects the property to Central London and neighbouring Chelsea.





# PETERBOROUGH VILLAS, SW6

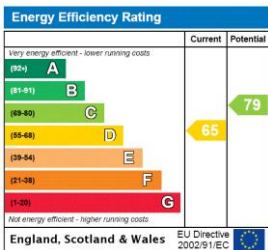
Approximate gross internal area  
823 sq ft / 76.76 sq m



## SECOND FLOOR

The floor plan is not to scale and measurements and areas shown are approximate and therefore should be used for illustrative purposes only. The plan has been prepared in accordance with the RICS code of Measuring Practice and whilst we have confidence in the information produced, it must not be relied on. If there is any aspect of particular importance, you should carry out or commission your own inspection of the property.

This floorplan is for illustration purposes only and is not to scale. The position and size of doors, windows, appliances and other features are approximate.



**Tenure:** Share of freehold

**Term:** n/a

**Service Charge:** n/a

**Ground Rent:** n/a

**Council Tax Band:** E

Where no figures are shown, we have been unable to ascertain the information. All figures that are shown were correct at the time of printing.



Fulham & Parsons Green | 020 7731 3388 | fulham@winkworth.co.uk

for every step...

winkworth.co.uk

Winkworth wishes to inform prospective buyers and tenants that these particulars are a guide and act as information only. All our details are given in good faith and believed to be correct at the time of printing but they don't form part of an offer or contract. No Winkworth employee has authority to make or give any representation or warranty in relation to this property. All fixtures and fittings, whether fitted or not are deemed removable by the vendor unless stated otherwise and room sizes are measured between internal wall surfaces, including furnishings.