



PLOUGH CLOSE, NW10
£500,000 LEASEHOLD

**A BRIGHT SPACIOUS FANTASTIC TWO
BEDROOM TWO BATHROOM FLAT IN THIS
GREAT DEVELOPMENT**

North Kensington | 020 7792 5000 | northkensington@winkworth.co.uk

Winkworth

for every step...

winkworth.co.uk



DESCRIPTION:

We are pleased to introduce to the market this fantastic two-bedroom two-bathroom apartment set on the second floor of this modern development just off Harrow Road. The property is in excellent condition throughout and comprises of a lovely reception room with eating area and open plan kitchen with fitted appliances, two double bedrooms (one en-suite), two great bathrooms and lots of storage space. The property is ideal for entertaining. Bright and airy, this property also benefits from an entry phone and there is also the possibility to apply for off street parking.

Ainsworth Court is ideally located off Harrow Road and is very close to Chamberlayne Road and College Road's many restaurants, pubs, shops with easy access to transport from Kensal Rise (Overground) and Kensal Green (Bakerloo line & Overland) stations plus numerous bus routes.

AT A GLANCE

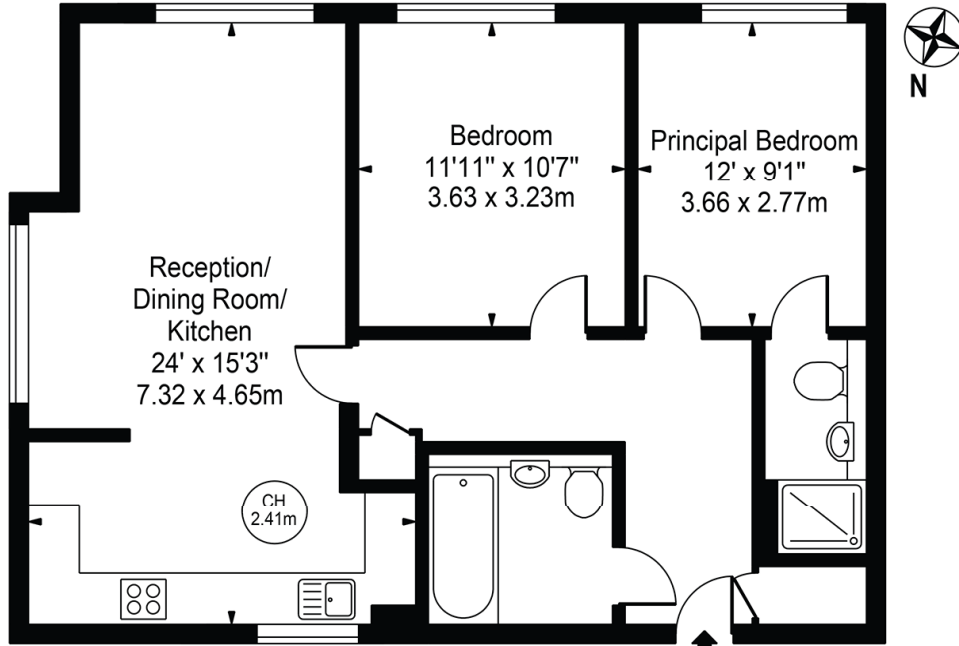
- Second Floor Flat
- Two Double Bedrooms
- Two Bathrooms
- Abundance of Natural Light
- Immaculate Condition
- Option to Rent and Off-Street Parking Space
- Plenty of Storage
- EPC Rating C





Ainsworth Court

Approx. Gross Internal Area 769 Sq Ft - 71.44 Sq M

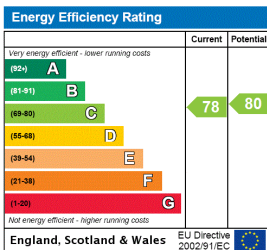


Second Floor

For Illustration Purposes Only - Not To Scale

This floor plan should be used as a general outline for guidance only and does not constitute in whole or in part an offer or contract. Any intending purchaser or lessee should satisfy themselves by inspection, searches, enquiries and full survey as to the correctness of each statement. Any areas, measurements or distances quoted are approximate and should not be used to value a property or be the basis of any sale or let. Copyright Morriarti Photography & Design LTD

This floorplan is for illustration purposes only and is not to scale. The position and size of doors, windows, appliances and other features are approximate.



Tenure: Leasehold

Term: 174 year and 7 months

Service Charge: £3031.68 per annum

Ground Rent: Peppercorn

Council Tax Band: Hammersmith and Fulham Band C

Where no figures are shown, we have been unable to ascertain the information. All figures that are shown were correct at the time of printing.

North Kensington | 020 7792 5000 | northkensington@winkworth.co.uk



for every step...

winkworth.co.uk

Winkworth wishes to inform prospective buyers and tenants that these particulars are a guide and act as information only. All our details are given in good faith and believed to be correct at the time of printing but they don't form part of an offer or contract. No Winkworth employee has authority to make or give any representation or warranty in relation to this property. All fixtures and fittings, whether fitted or not are deemed removable by the vendor unless stated otherwise and room sizes are measured between internal wall surfaces, including furnishings.