



ROUNDWOOD ROAD, LONDON, NW10
£550,000 SHARE OF FREEHOLD

RENOVATED AND FULLY EXTENDED, THREE BEDROOM, TWO BATHROOM, GROUND FLOOR FLAT WITH PRIVATE REAR GARDEN AND STUDIO/SUMMERHOUSE WITH SHARE OF FREEHOLD.

Kensal & Queens Park | 0208 960 4947 | kensalrise@winkworth.co.uk





LOCATION:

Roundwood Road is an attractive, residential street which benefits from being near to the open green spaces of Roundwood Park.

Dollis Hill, Neasden and also Willesden Junction offer excellent transport links in and out of town via the Bakerloo, Jubilee and London Overground services.





DESCRIPTION:

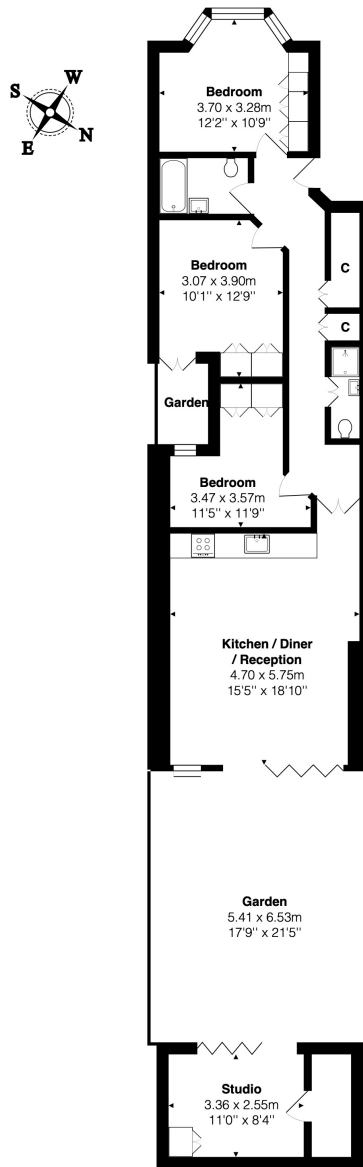
This fantastic and spacious flat offers 960 sqft of internal space, comprising of two double bedrooms and large single room to the front section of the flat, including the main bathroom and additional shower room located under the stairs. Both are three piece tiled suites.

To the rear of the flat, you will find an incredible extended open plan reception room and fully fitted kitchen with dining space. The bi-folding doors slide open the entire width of the property, leading on to the private garden. As part of the side and rear extension works, multiple sky lights were installed, flooding this entire space with natural light.

Additionally, there is a studio/summer house in the garden – perfect for additional storage, a home office or gym.

The property is in brand newly renovated and is certainly not one to be missed.





Ground Floor

Total Area: 89.2 m² ... 960 ft² (excluding garden)

All measurements are approximate and for display purposes only

This floorplan is for illustration purposes only and is not to scale. The position and size of doors, windows, appliances and other features are approximate.

Kensal & Queens Park | 0208 960 4947 | kensalrise@winkworth.co.uk

Winkworth

winkworth.co.uk

See things differently

winkworth wishes to inform prospective buyers and tenants that these particulars are a guide and act as information only. All our details are given in good faith and believed to be correct at the time of printing but they don't form part of an offer or contract. No winkworth employee has authority to make or give any representation or warranty in relation to this property. All fixtures and fittings, whether fitted or not are deemed removable by the vendor unless stated otherwise and room sizes are measured between internal wall surfaces, including furnishings.