



MOYSER ROAD, SW16  
OIEO £500,000 FREEHOLD

## A BEAUTIFULLY PRESENTED ONE BEDROOM COTTAGE

Tooting | 020 8767 5221 | [tooting@winkworth.co.uk](mailto:tooting@winkworth.co.uk)

**Winkworth**

for every step...

[winkworth.co.uk](http://winkworth.co.uk)





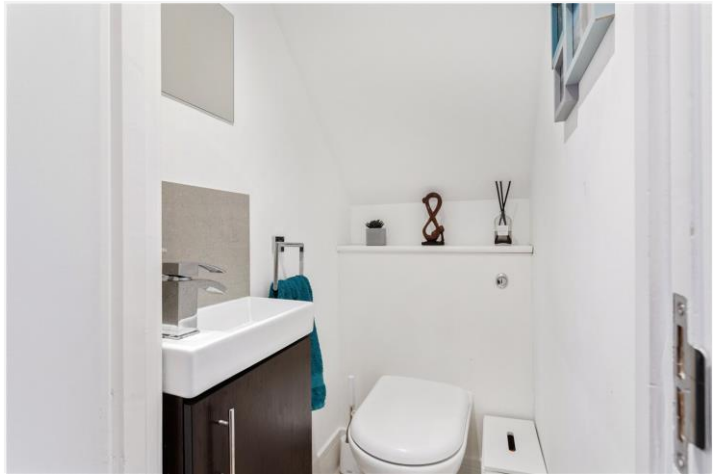
## DESCRIPTION:

On the ground floor of this bright and beautifully presented cottage, you'll find a spacious reception room that seamlessly flows into a sleek, modern kitchen featuring a tiled splashback and integrated appliances. The ground floor also benefits from a separate WC and double doors leading to a northwest-facing patio garden, perfect for outdoor relaxation. Upstairs, there is a generously sized, carpeted double bedroom with built-in wardrobes, a contemporary bathroom, and a convenient storage cupboard.

Moyser Road, located in the heart of the Furzedown area in SW16, is a charming and vibrant street that perfectly blends community spirit with modern convenience. Known for its independent shops, cafés, and local businesses, Moyser Road offers a friendly, village-like atmosphere that appeals to families, young professionals, and long-time residents alike. The area boasts plenty of green spaces, including nearby Tooting Bec Common, ideal for outdoor activities and relaxation. With easy access to both Streatham Common (0.6 miles) and Tooting Broadway stations (1.3 miles) residents enjoy excellent transport links to central London while benefiting from the peaceful, suburban feel of this sought-after neighbourhood. Moyser Road truly offers the best of both worlds: a lively, welcoming community paired with convenient amenities and transport options.

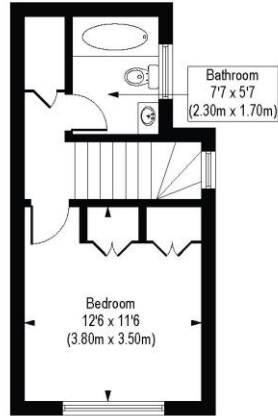
Wandsworth Council Tax Band: D



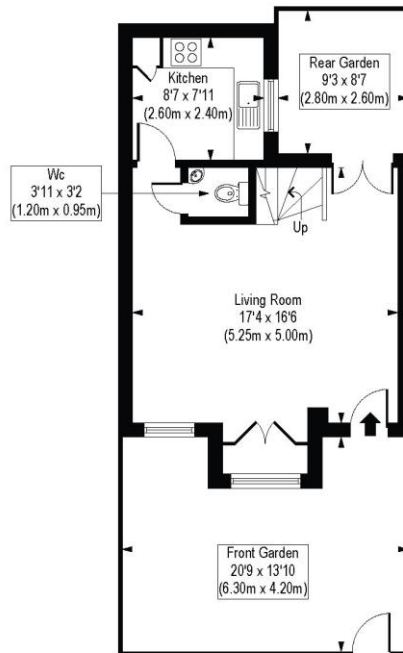


# White Cottage, SW16

Approx. Gross Internal Floor Area 633 sq. ft / 58.83 sq. m



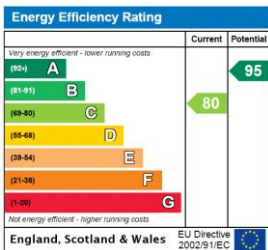
First Floor  
Gross Internal  
Floor Area 261 sq ft



Ground Floor  
Gross Internal  
Floor Area 372 sq ft

COMPLIANT WITH RICS CODE OF MEASURING PRACTICE. Floorplan is for illustrative purposes only and is not to scale. Every attempt has been made to ensure the accuracy of the floorplan shown, however all measurements, fixtures, fittings and data shown are an approximate interpretation for illustrative purposes only. Liability for errors, omissions or mis-statement through negligence or otherwise is hereby excluded.

This floorplan is for illustration purposes only and is not to scale. The position and size of doors, windows, appliances and other features are approximate.



Tooting | 020 8767 5221 | tooting@winkworth.co.uk

for every step...

winkworth.co.uk

Winkworth wishes to inform prospective buyers and tenants that these particulars are a guide and act as information only. All our details are given in good faith and believed to be correct at the time of printing but they don't form part of an offer or contract. No Winkworth employee has authority to make or give any representation or warranty in relation to this property. All fixtures and fittings, whether fitted or not are deemed removable by the vendor unless stated otherwise and room sizes are measured between internal wall surfaces, including furnishings.