



Winkworth



Winkworth



Winkworth

SHORT ROAD, W4  
**£3,500 PER MONTH UNFURNISHED**

**NEW INSTRUCTION\* DELIGHTFUL 3-BEDROOM  
PERIOD HOUSE IN THIS CHARMING QUIET TREE  
LINED STREET.**

Chiswick | 020 8994 7096 | [chiswick@winkworth.co.uk](mailto:chiswick@winkworth.co.uk)

**Winkworth**

for every step...

[winkworth.co.uk](http://winkworth.co.uk)



## DESCRIPTION:

Winkworth is proud to offer this delightful 3-bedroom period house on this charming quiet street just moments from Chiswick House and Grounds and the River Thames.

Accommodation comprises a reception room, smart kitchen leading to the garden, 2 double bedrooms and a super family bathroom on the first floor; and a large bedroom with en-suite in the converted attic.

Further benefits include a private courtyard garden and fresh neutral decor throughout.

Turnham Green tube (district and piccadilly lines) and Chiswick main line station (to London Waterloo) are within walking distance, and for the motorist the A4/M4 are just moments away.

The house is available 24th July. Early viewings are a must.

EPC: D

Council Tax Band: F/Hounslow Borough Council

1 week Holding deposit: £807.69

5-week Security deposit: £4,038.46

## ACCOMMODATION

3 Bedrooms

2 Reception Rooms

2 Bathrooms

Garden, Patio

Conservatory,

Off Street Parking,

Unfurnished

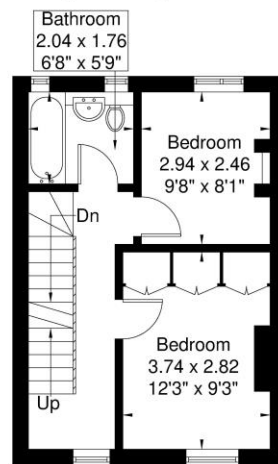
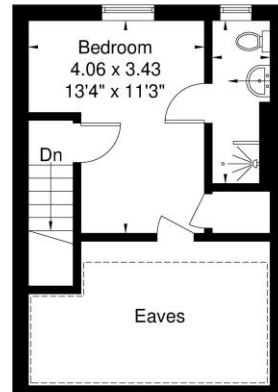
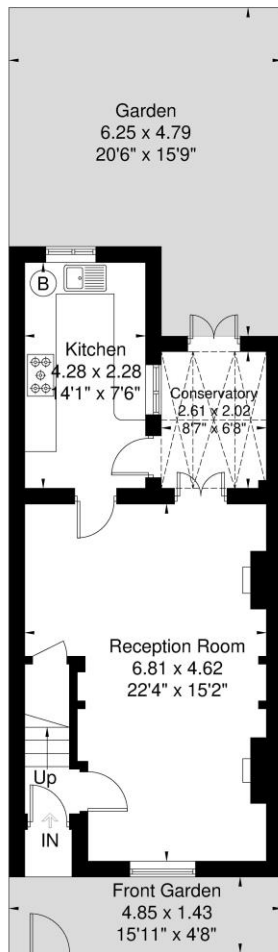


# Short Road

Approximate Gross Internal Area = 98.2 sq m / 1057 sq ft  
 Eaves / Reduced Headroom = 11.6 sq m / 125 sq ft  
 Total = 109.8 sq m / 1182 sq ft



= Reduced headroom below 1.5m / 5'0"



**Winkworth**

Although every attempt has been made to ensure accuracy, all measurements are approximate. The floorplan is for illustrative purposes only and not to scale.  
 © www.prspective.co.uk

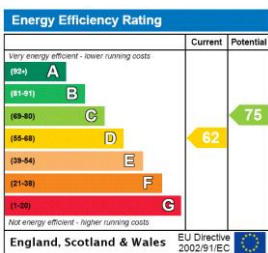
This floorplan is for illustration purposes only and is not to scale. The position and size of doors, windows, appliances and other features are approximate.

**Deposit: £4,038.46**

**Holding Deposit:**

**Council Tax Band: F**

Where no figures are shown, we have been unable to ascertain the information. All figures that are shown were correct at the time of printing.



Chiswick | 020 8994 7096 | chiswick@winkworth.co.uk

**Winkworth**

for every step...

winkworth.co.uk

Winkworth wishes to inform prospective buyers and tenants that these particulars are a guide and act as information only. All our details are given in good faith and believed to be correct at the time of printing but they don't form part of an offer or contract. No Winkworth employee has authority to make or give any representation or warranty in relation to this property. All fixtures and fittings, whether fitted or not are deemed removable by the vendor unless stated otherwise and room sizes are measured between internal wall surfaces, including furnishings.