



TOOTING BEC ROAD, SW17
OIEO £425,000 LEASEHOLD

A FANTASTIC BRIGHT AND SPACIOUS 2 BED APARTMENT

Tooting | 020 8767 5221 | tooting@winkworth.co.uk

Winkworth

for every step...

winkworth.co.uk



DESCRIPTION:

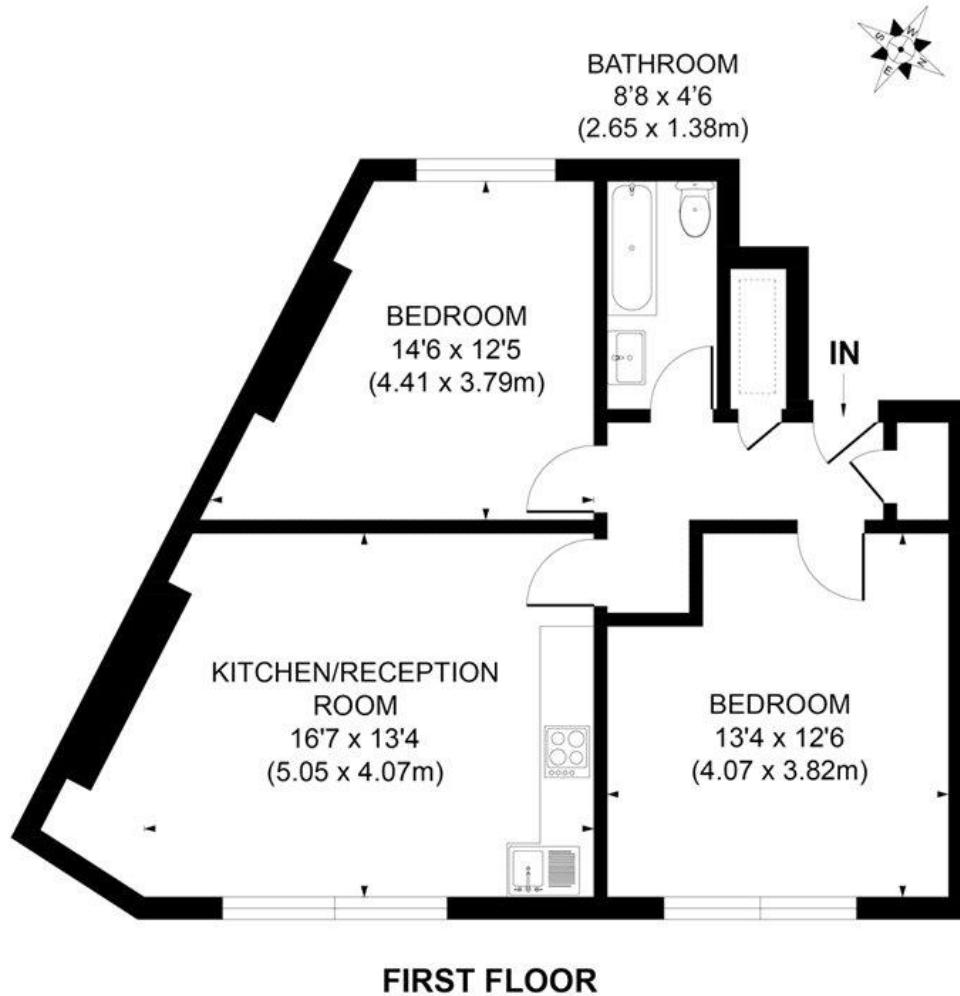
A delightful two double bedroom flat is ideally located near to Tooting Bec Station and green spaces of Tooting Bec Common. The property is finished off to a high standard throughout and offers light, bright and spacious accommodation.

Set on the first floor, the property comprises a spacious open plan reception room with a modern kitchen finished with hard wood floors and offering ample space for dining and living, two well sized double bedrooms and a modern bathroom. The property is offered unfurnished.

Located in the heart of Tooting Bec, right by Tooting Bec Underground station making this ideal for any commuter needing the Northern Line, and close to all local amenities.

CASH BUYERS OPPORTUNITY PLEASE NOTE THIS PROPERTY IS ABOVE A COMMERCIAL UNIT

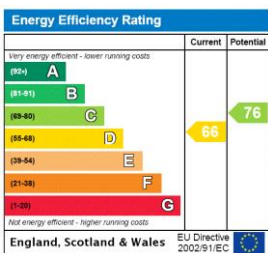




APPROX. GROSS INTERNAL FLOOR AREA 650 SQ. FT/60.43 SQ. M

Illustration for identification purpose only, not to scale
All measurements are maximum, and includes wardrobes and window bays where applicable
Prepared by Pixangle ©. Tel 020 8870 2118

This floorplan is for illustration purposes only and is not to scale. The position and size of doors, windows, appliances and other features are approximate.



Tooting | 020 8767 5221 | tooting@winkworth.co.uk

for every step...

winkworth.co.uk

Winkworth wishes to inform prospective buyers and tenants that these particulars are a guide and act as information only. All our details are given in good faith and believed to be correct at the time of printing but they don't form part of an offer or contract. No Winkworth employee has authority to make or give any representation or warranty in relation to this property. All fixtures and fittings, whether fitted or not are deemed removable by the vendor unless stated otherwise and room sizes are measured between internal wall surfaces, including furnishings.