



LONG LANE, FINCHLEY, LONDON, N3  
£365,000 SHARE OF FREEHOLD

## A SPACIOUS ONE BEDROOM APARTMENT SET IN A PRIME N3 LOCATION

Finchley | 020 8349 3388 | finchley@winkworth.co.uk



for every step...

[winkworth.co.uk](http://winkworth.co.uk)





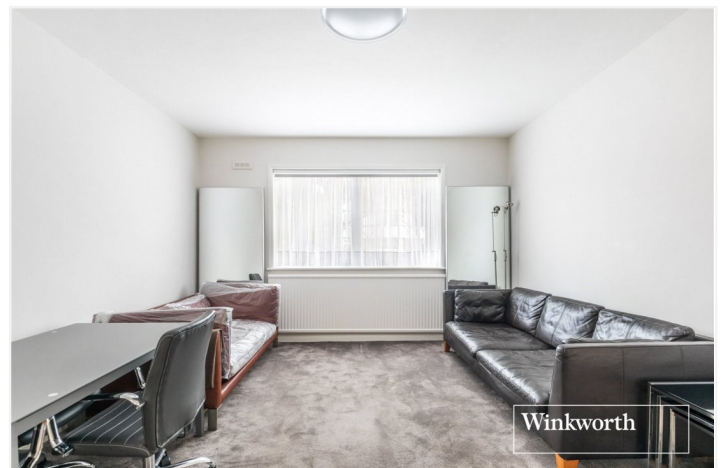
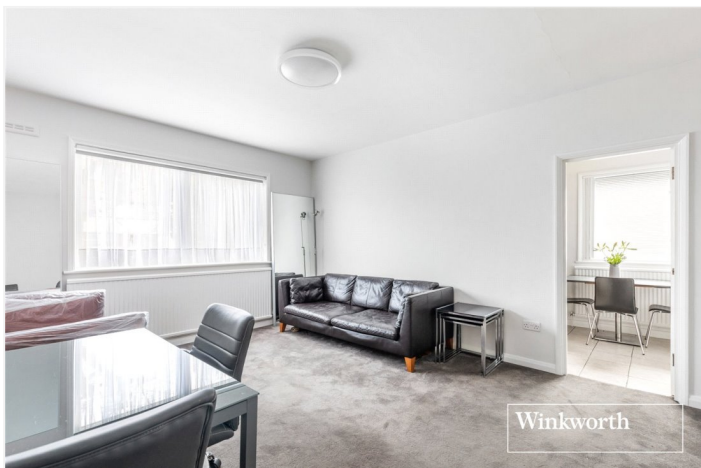
## DESCRIPTION:

We are pleased to offer this spacious one bedroom ground floor apartment set in a quiet development opposite Victoria Park, ideally located for all the transport and shopping facilities on Ballards Lane, including Finchley Central Underground Station. The property comprises spacious reception room, separate eat-in kitchen, double bedroom, bathroom and plenty storage throughout. Further benefits include residents' parking, communal gardens and a share of the freehold. An internal viewing is highly recommended!

Offered on a chain free basis.

## AT A GLANCE

- Ground floor apartment
- Quiet Development
- Opposite Victoria Park
- Double bedroom
- Spacious reception room
- Eat-in Kitchen
- Residents' parking
- Share of freehold







Winkworth



Winkworth



Winkworth



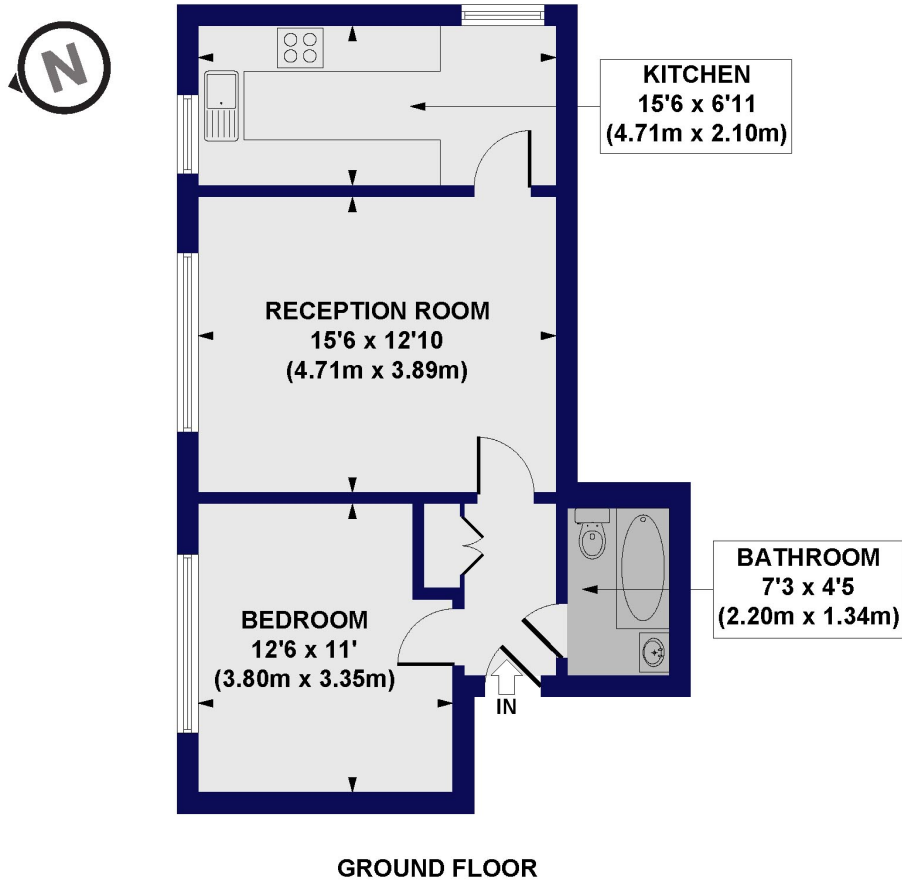
Winkworth



Winkworth



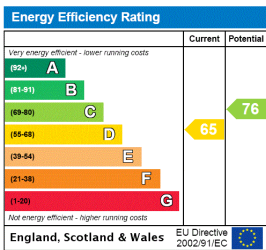
**Marlex Lodge, Long Lane, N3**  
 Approx. Gross Internal Floor Area 524 sq. ft / 48.71 sq. m



All measurements of walls, doors, windows, fittings and appliances, including their size and location, are shown as standard sizes and do not constitute any warranty or representation by the seller, their agent or CP Creative. Any intending purchaser must satisfy himself by inspection or otherwise as to the correctness of the information contained in these plans. This plan is for illustrative purposes only and should be used as such by any prospective purchasers.

**Winkworth**

This floorplan is for illustration purposes only and is not to scale. The position and size of doors, windows, appliances and other features are approximate.



**Winkworth**

Finchley | 020 8349 3388 | finchley@winkworth.co.uk

for every step...

winkworth.co.uk

Winkworth wishes to inform prospective buyers and tenants that these particulars are a guide and act as information only. All our details are given in good faith and believed to be correct at the time of printing but they don't form part of an offer or contract. No Winkworth employee has authority to make or give any representation or warranty in relation to this property. All fixtures and fittings, whether fitted or not are deemed removable by the vendor unless stated otherwise and room sizes are measured between internal wall surfaces, including furnishings.